



Decorative Bollard

SKU: N0Jbo100

36" Tall Bollard, 8 5/8" Dia. with
Cast Aluminum Top & Base Trim

Dimensions: 36" Tall
8 5/8" Tube Dia.
1/4" Wall Thickness

Materials:

Tube - 8 5/8" O.D. x 1/4" Wall HSS Steel Tube

Top & Base Trim - Cast Aluminum

Hardware - Stainless Steel, Security Bolts

Installation Modes: - **SP** - Surface Mount, Permanent
- **SR** - Surface Mount, Removable
- **GP** - Inground Mount, Permanent

Options: - Eye Bolts for chain

Finish:

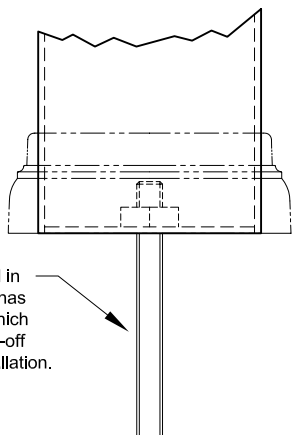
Electrostatically applied polyester powder top coat. Steel components receive corrosion protection from a Zinc Rich Primer applied as an epoxy powder coat.

Notes: Dimensions shown are in inches.

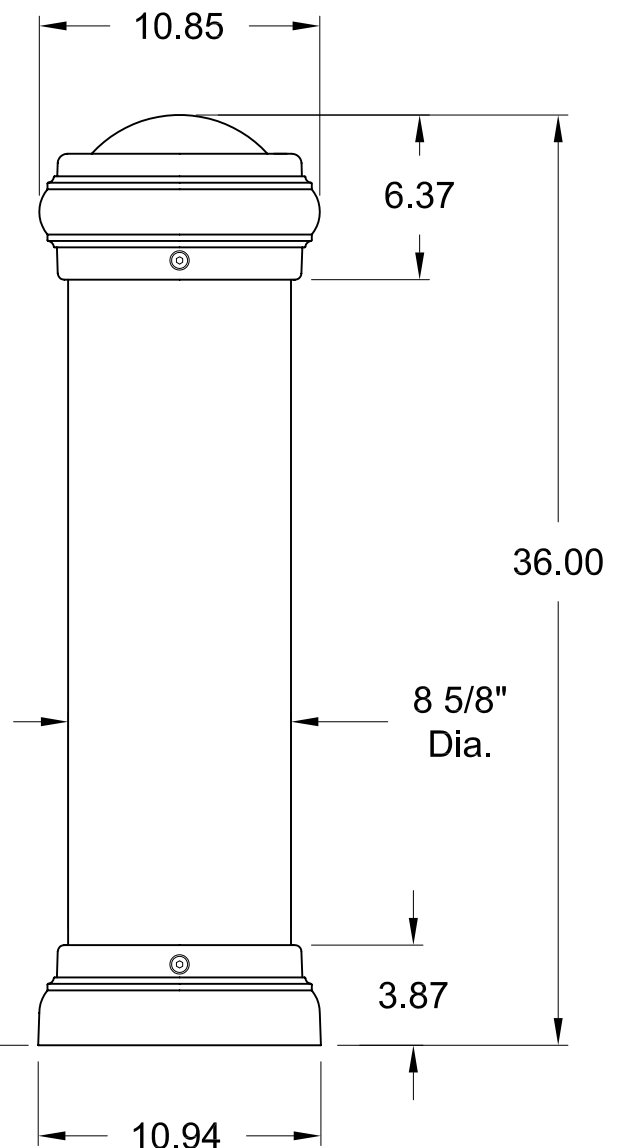
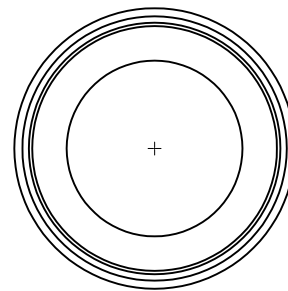
We have endeavoured to insure that all product specifications listed on this document were correct at the time of publication. We reserve the right to improve, alter or discontinue specifications without notice.

Shown:

Mounting Detail



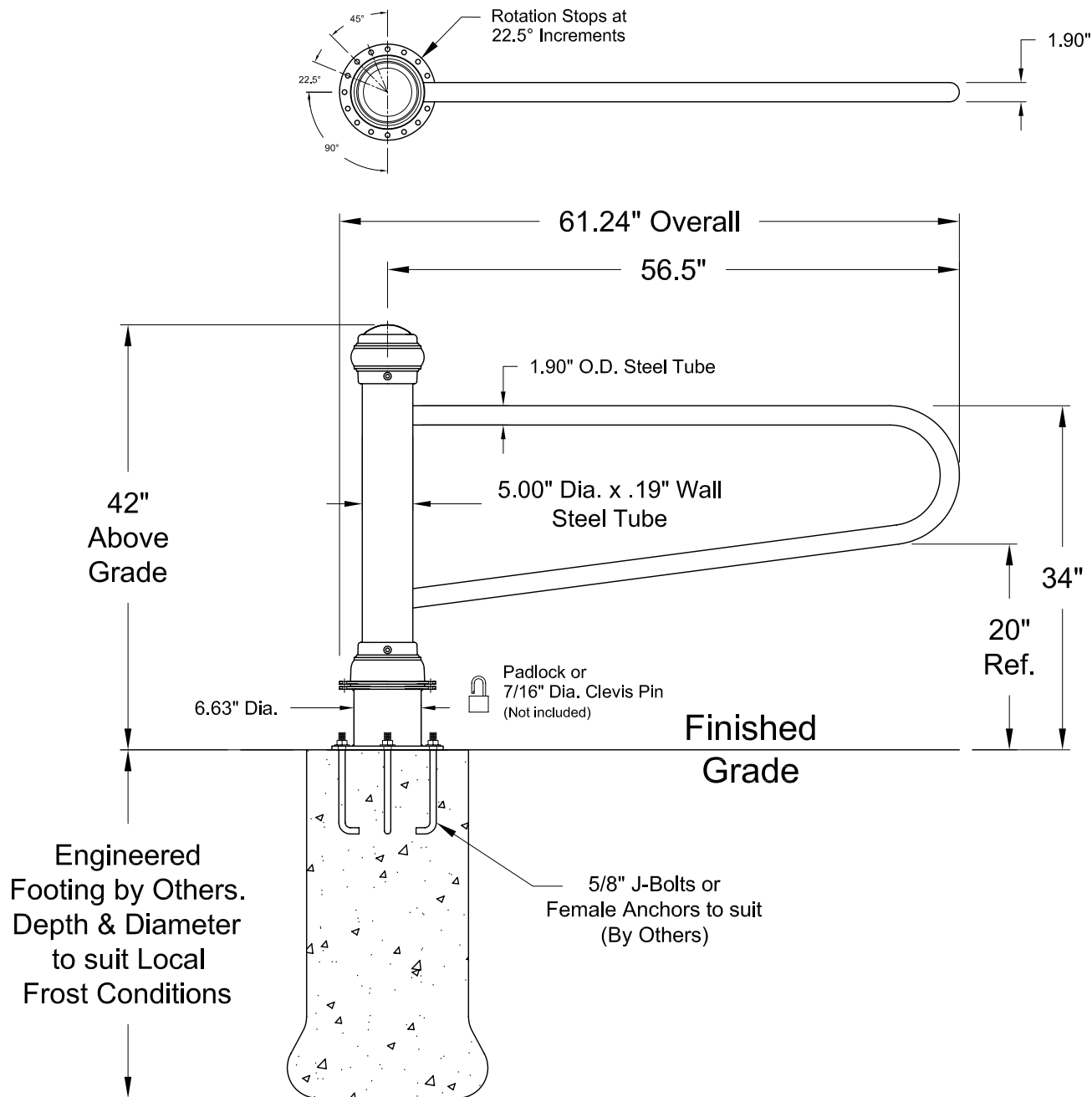
Threaded Rod is Anchored in existing concrete. Bollard has internally threaded base which allows for infrequent screw-off removal and simple reinstallation.



Mounting
Surface

Bollard Gate

Removable Model



Materials:

- 5" O.D. x .188" Wall Steel Tube
- 3.5" O.D. Steel Tube
- 6.63" O.D. Steel Tube
- 1.9" O.D. x .125" Wall Steel Tube
- 1/4" Steel Plate
- 3/8" Steel Plate
- Bearing Plates - HDPE
- Top & Base Trim - Cast Aluminum
- Hardware - Stainless Steel, Security Bolts

Finish:

Electrostatically applied polyester powder top coat. Steel components receive corrosion protection from an E-Coat Primer.

Notes: Dimensions shown are in inches.

We have endeavoured to insure that all product specifications listed on this document were correct at the time of publication.

We reserve the right to improve, alter or discontinue specifications without notice.

24Mar10