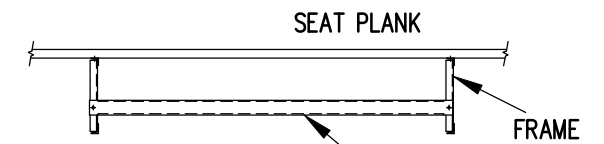


X-BRACE DETAIL

N.T.S.

BOLT SCHEDULE

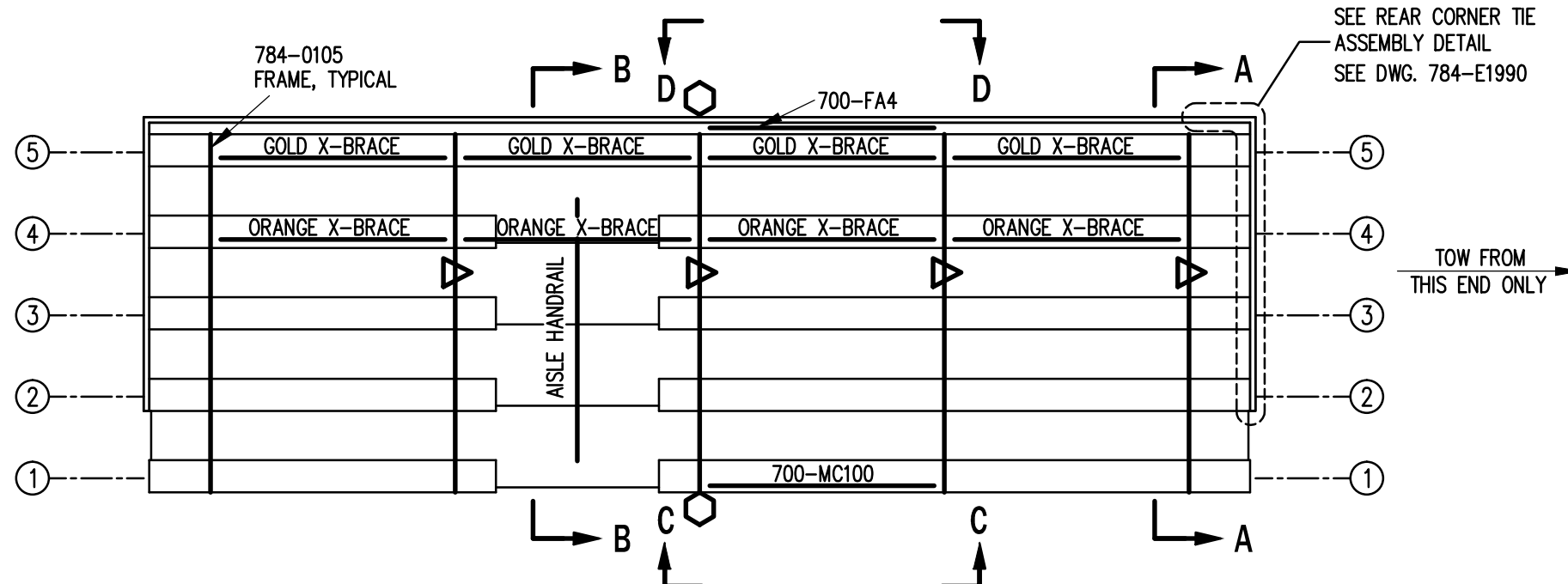
- 7/16" X 1" GALV. MACH. BOLT
- △ 7/16" X 1.1/2" GALV. MACH. BOLT



VIEW CC

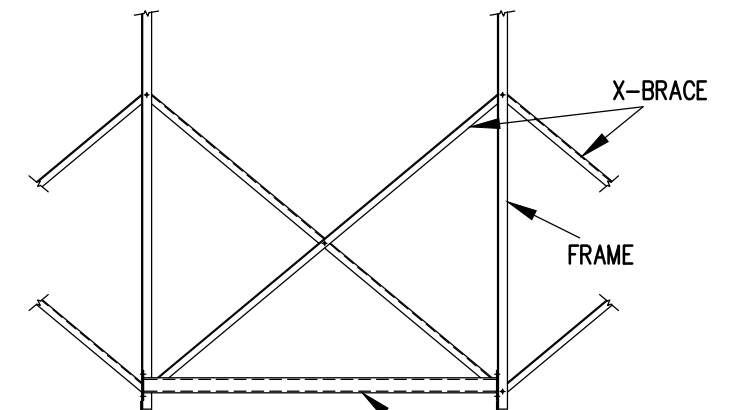
N.T.S.

700-M100 - ATTACH WITH
(2) 7/16" x 1" GALV.
MACH. BOLT



SEE REAR CORNER TIE
ASSEMBLY DETAIL
SEE DWG. 784-E1990

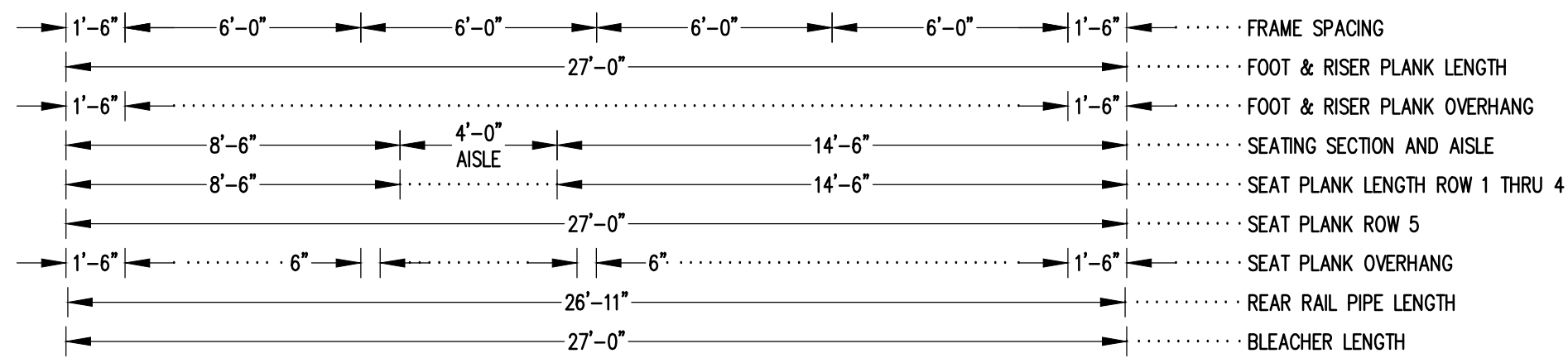
TOW FROM
THIS END ONLY



VIEW DD

N.T.S.

700-FA4 - ATTACH WITH
(4) 7/16" x 1" GALV.
MACH. BOLT



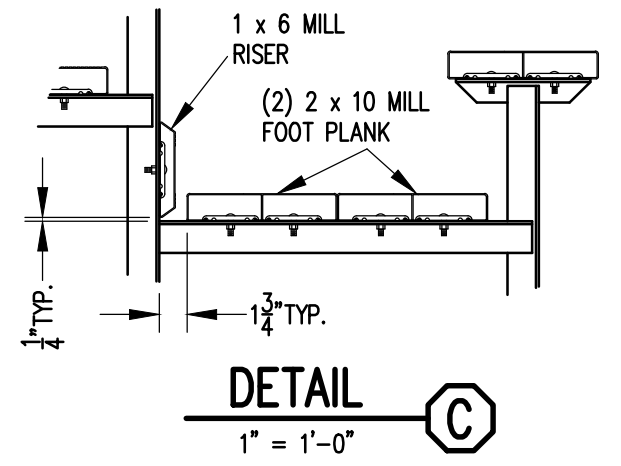
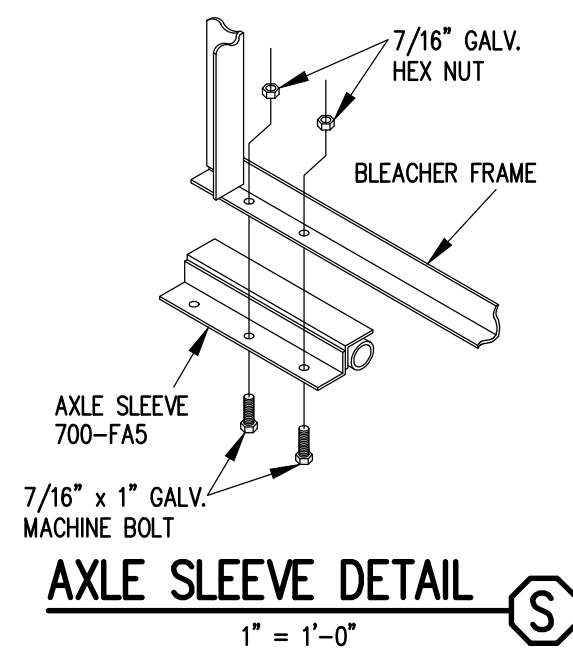
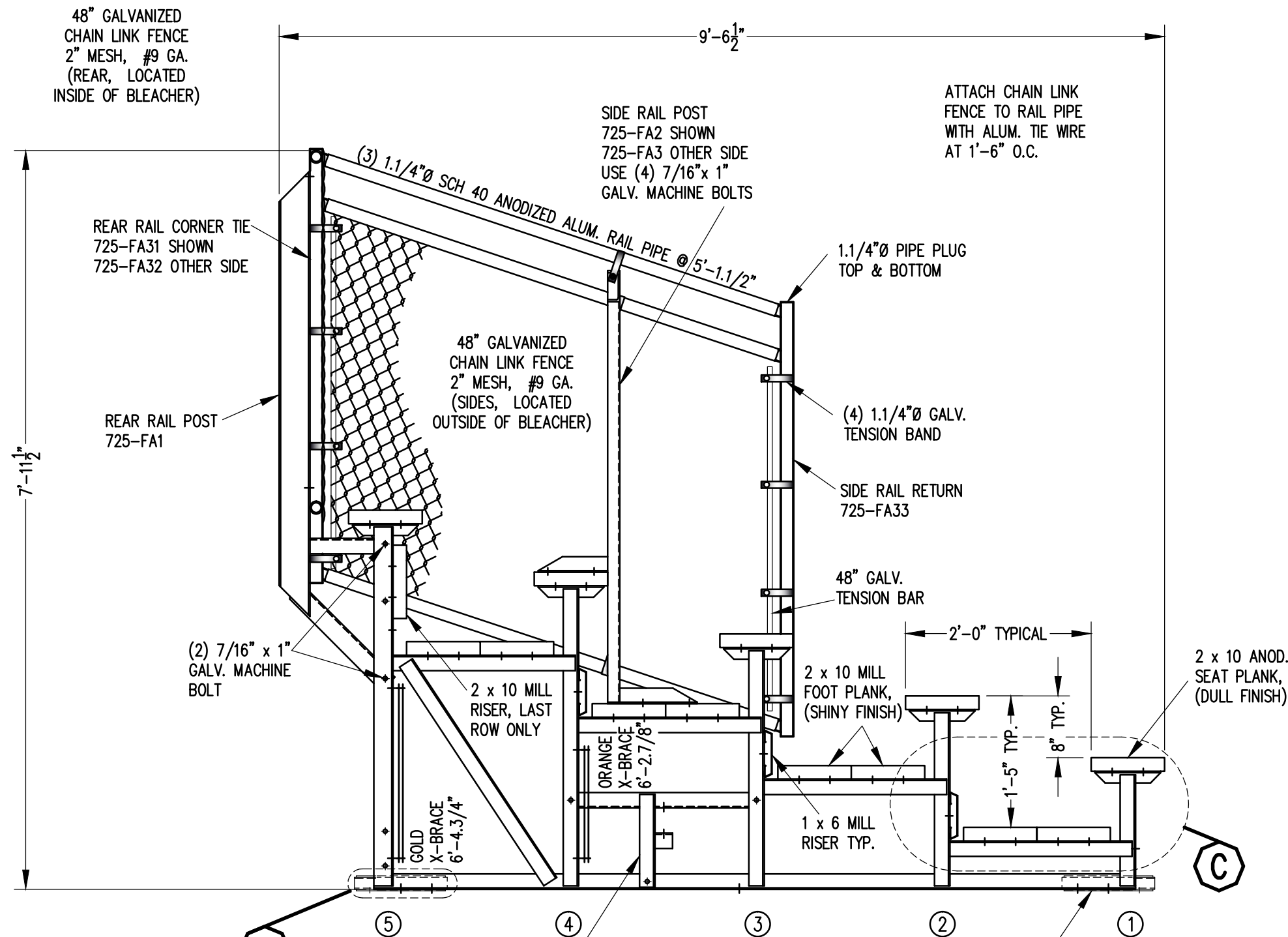
SEATING & FRAMING PLAN

1/4" = 1'-0"

74 NET SEATS @ 18" PER SEAT

- DENOTES AXLE SLEEVE LOCATIONS
- ▷ DENOTES TONGUE GUIDE LOCATIONS

		Park Warehouse	
SCALE	AS NOTED	REVISIONS	BY DATE
DATE	11/2/11		
DR'N	CDK	CKD	
AP'VD			
TITLE	129-1188-3		NO. 129-1188-3

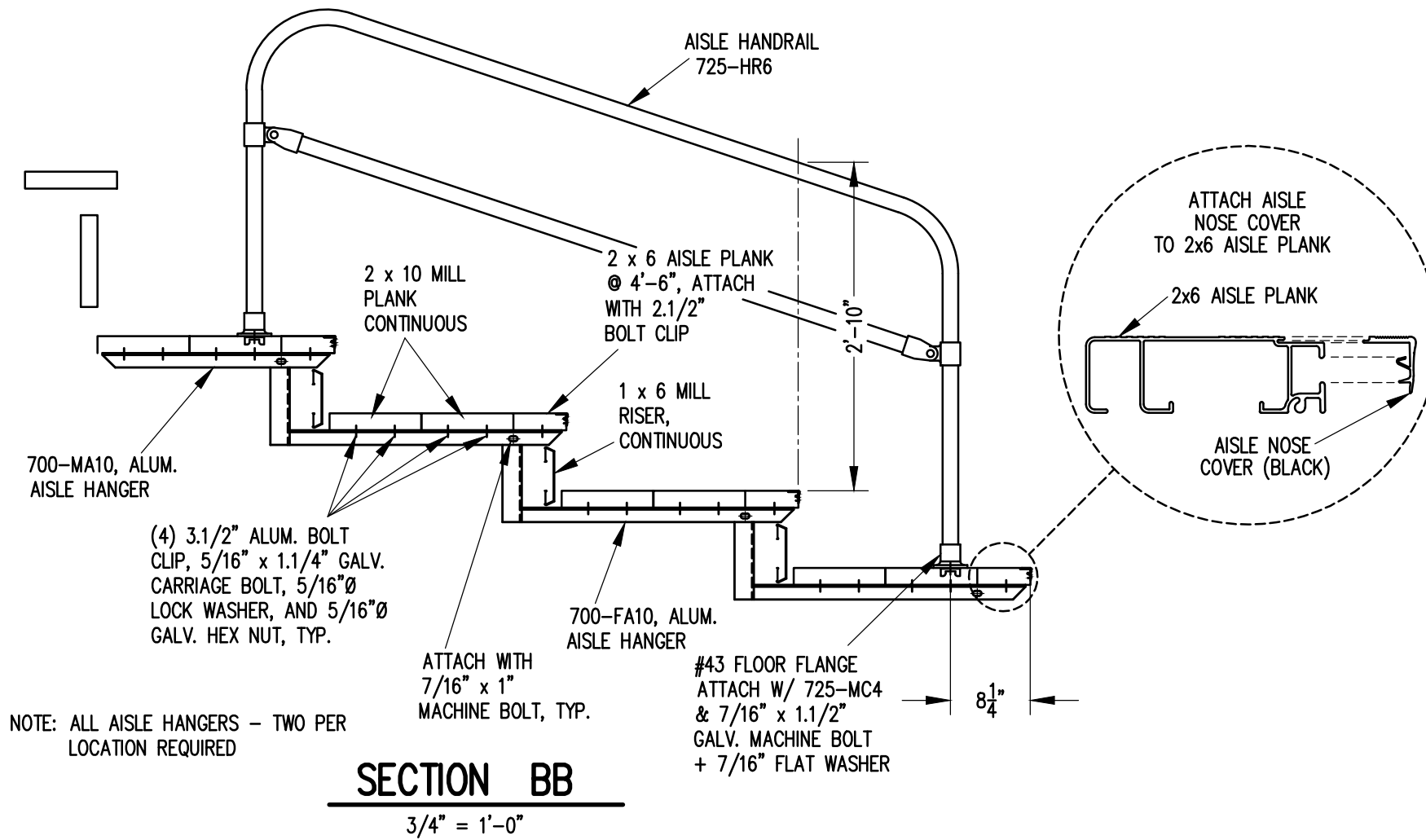


'1" TONGUE GUIDE
700-FA1
ATTACH W/ (3) 7/16" x 1"
GALV. MACHINE BOLTS
SEE FRAMING PLAN FOR
LOCATIONS.

SECTION AA
3/4" = 1'-0"

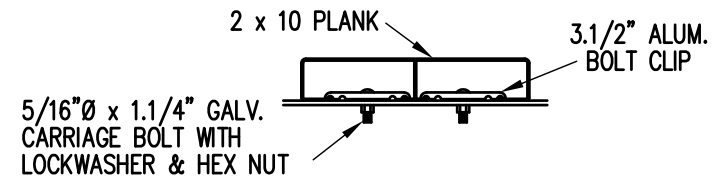
AXLE SLEEVE
700-FA5
ATTACH W/ (2) 7/16" x 1"
GALV. MACHINE BOLTS
SEE FRAMING PLAN FOR
LOCATIONS.

		Park Warehouse	
SCALE	AS NOTED	REVISIONS	BY DATE
DATE	11/2/11		
DR'N	CDK	CKD	
AP'VD			
TITLE	129-1188-3		NO. 129-1188-3



Park Warehouse

SCALE 3/4"=1'-0"	REVISIONS	BY	DATE
DATE 11/2/11			
DR'N GPK CKD			
AP'VD			
TITLE	NO.		
129-1188-3	129-1188-3		



BOLT CLIP DETAIL

1.1/2" = 1'-0"



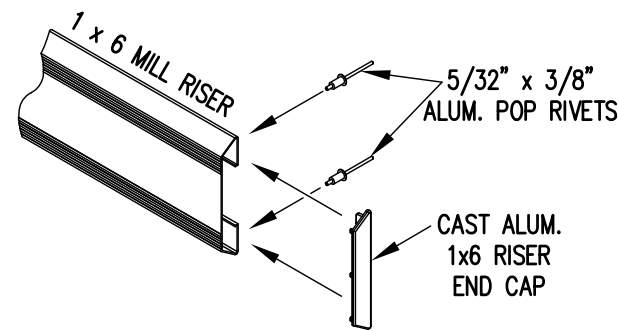
FIG.1

FIG.2

- 1) LOCATE THE CHANNEL END CAP AS SHOWN IN FIG. 1.
- 2) TAP END CAP INTO PLACE WITH RUBBER Mallet OR SOFT WOOD. FIG.2
- 3) DRILL 5/32" HOLES THROUGH THE BOTTOM FLANGE AND THE BOTTOM OUTSIDE PLANK FLANGES OF EACH PLANK. INSTALL 5/32" POP RIVETS.

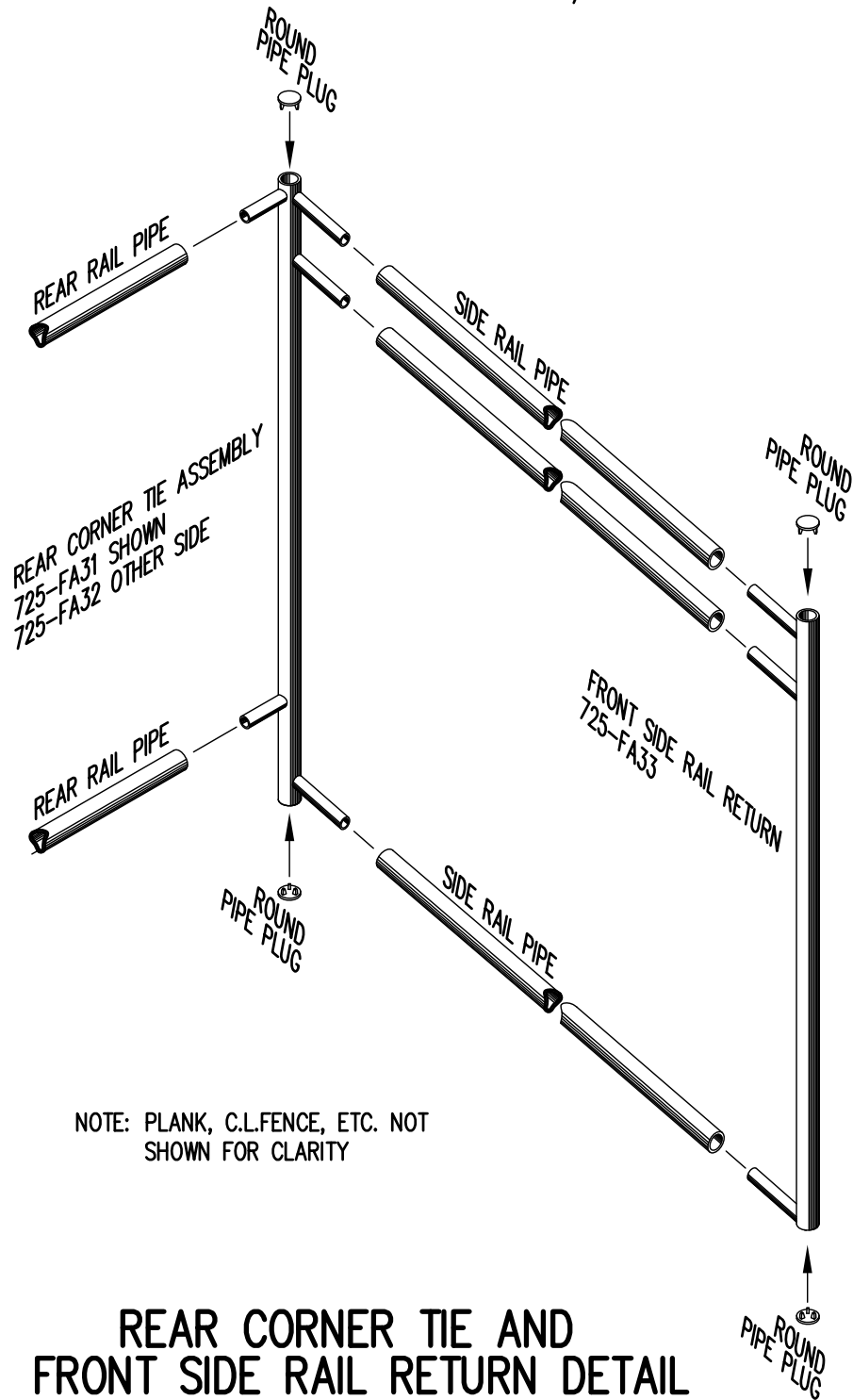
END CAP DETAIL

N.T.S.



1 x 6 RISER END CAP

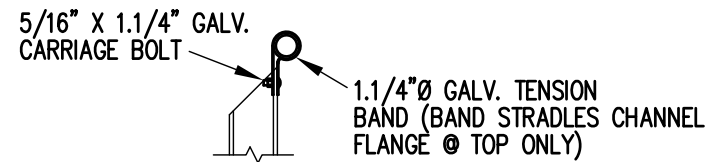
N.T.S.



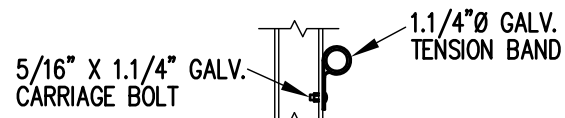
REAR CORNER TIE AND FRONT SIDE RAIL RETURN DETAIL

3/4" = 1'-0"

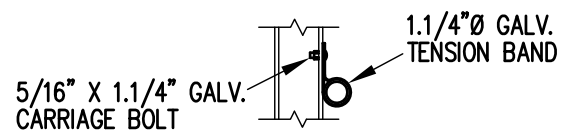
NOTE: PLANK, C.L.FENCE, ETC. NOT SHOWN FOR CLARITY



TOP RAIL

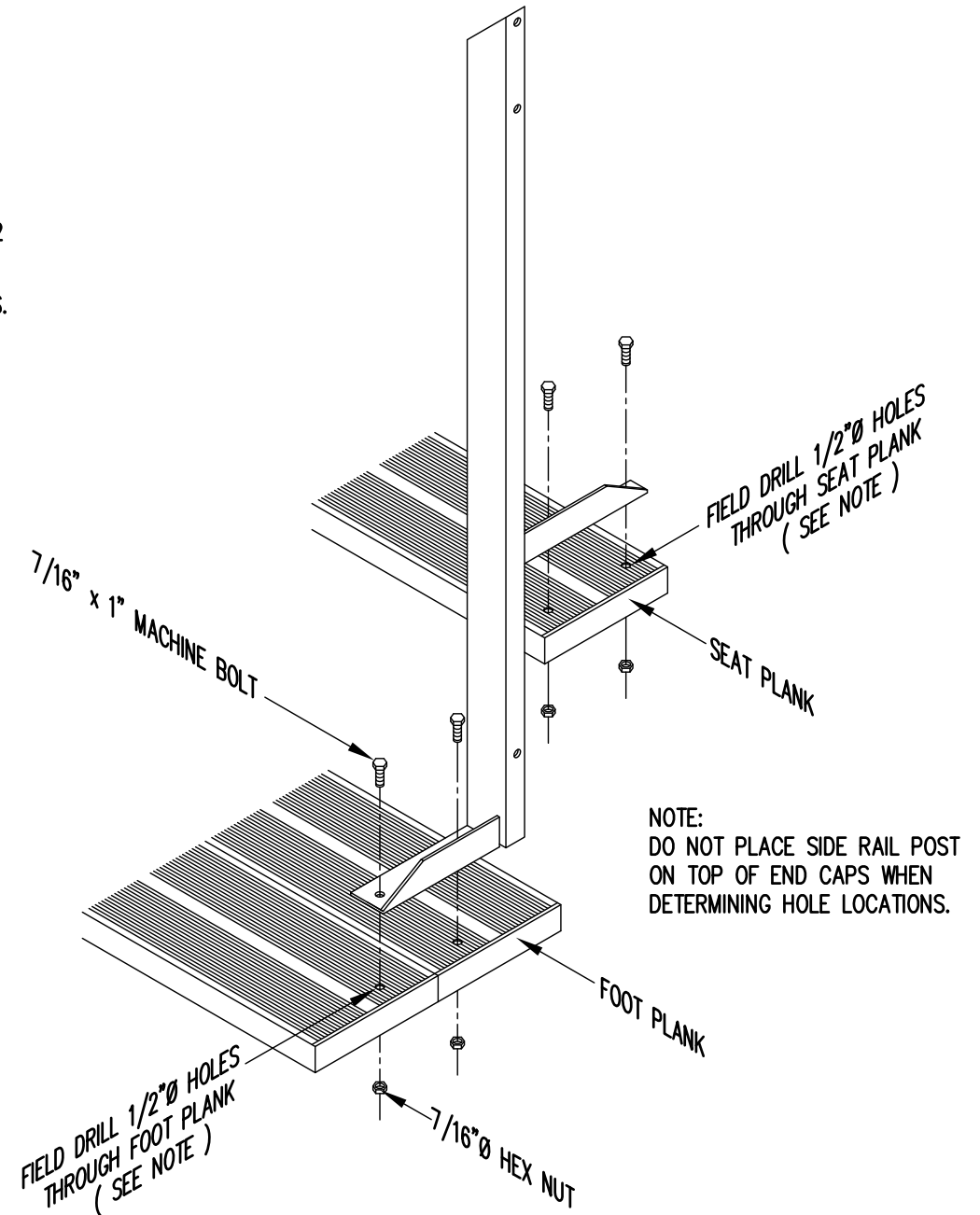


2ND RAIL



BOTTOM RAIL

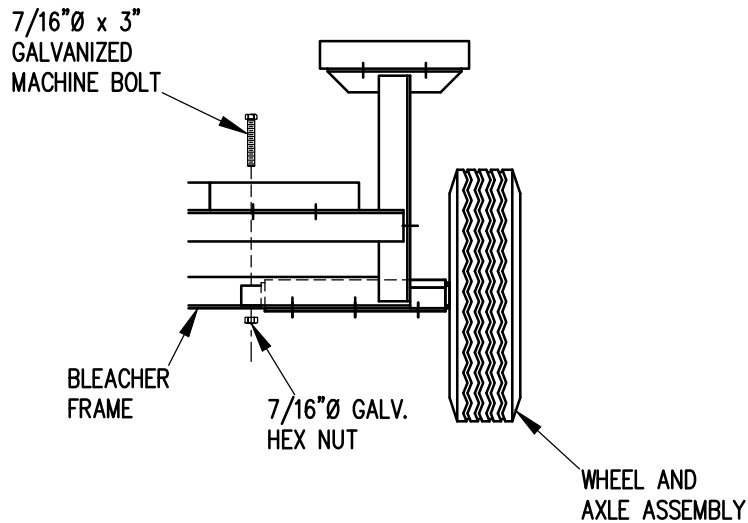
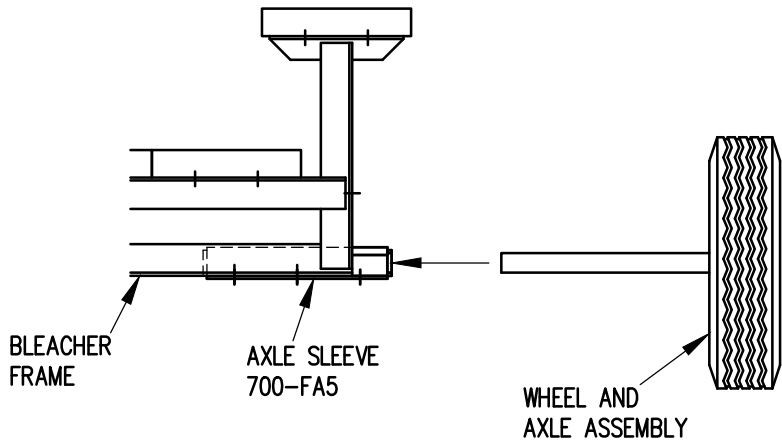
RAIL PIPE ATTACHMENT



TYP. SIDE RAIL POST ATTACHMENT

1" = 1'-0"

		Park Warehouse	
SCALE	AS NOTED	REVISIONS	BY DATE
DATE	11/2/11		
DR'N	CDK CKD		
AP'VD			
TITLE	129-1188-3	NO.	129-1188-3

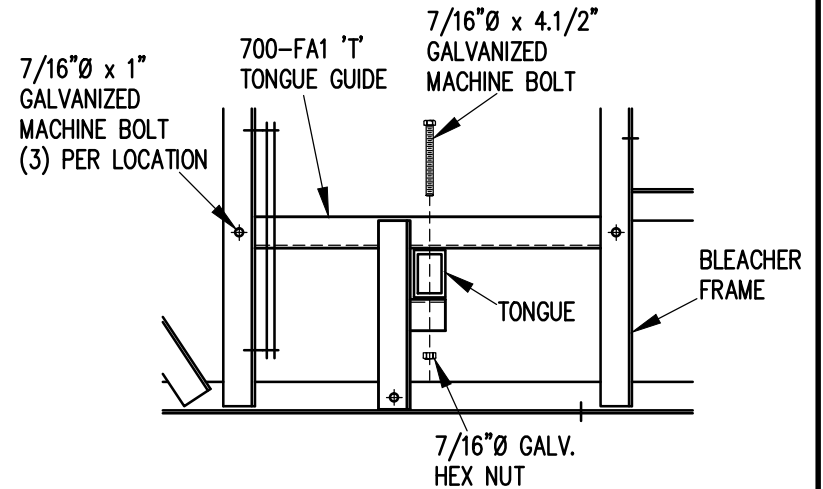


1. ELEVATE BLEACHER TO RECEIVE WHEEL UNITS.
2. INSERT WHEEL AND AXLE ASSEMBLY INTO AXLE SLEEVE AS SHOWN.
3. INSERT 7/16" X 3" GALVANIZED MACHINE BOLT THROUGH AXLE TO SECURE IN AXLE SLEEVE.

WHEEL AND AXLE ATTACHMENT

1" = 1'-0"

NOTE: SEE FRAMING PLAN FOR LOCATION OF AXLE SLEEVES AND TONGUE GUIDES.



1. INSERT TONGUE THROUGH TONGUE GUIDES.
2. ATTACH TONGUE TO TONGUE BRACKETS WITH 7/16" X 4.1/2" GALVANIZED MACHINE BOLTS AS SHOWN.
3. TIGHTEN SECURELY.

TONGUE ATTACHMENT

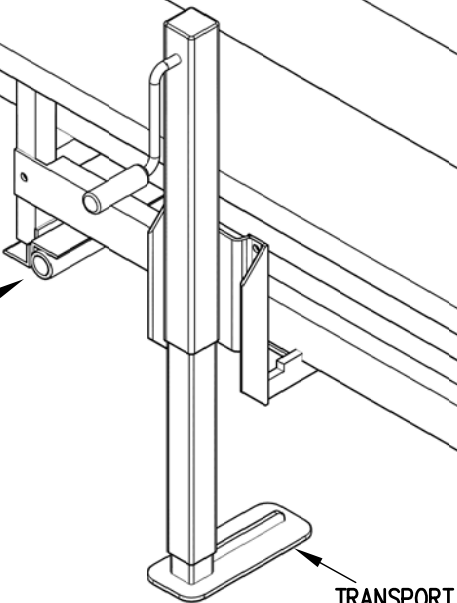
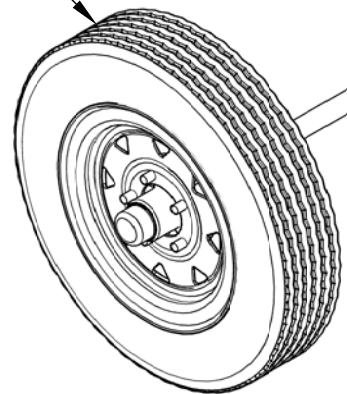
1" = 1'-0"



Park Warehouse

SCALE	1"=1'-0"	REVISIONS	BY	DATE
DATE	11/2/11			
DR'N	ADK	CKD		
AP'VD				
TITLE	129-1188-3		NO.	129-1188-3

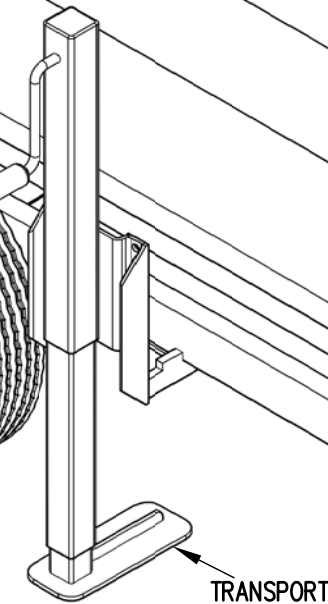
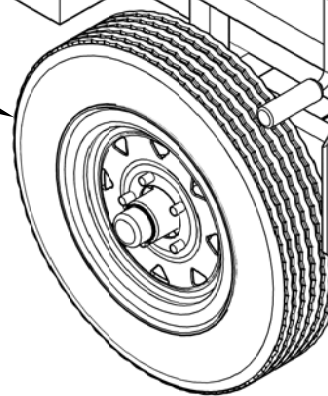
WHEEL AND AXLE ASSEMBLY



TRANSPORT JACK

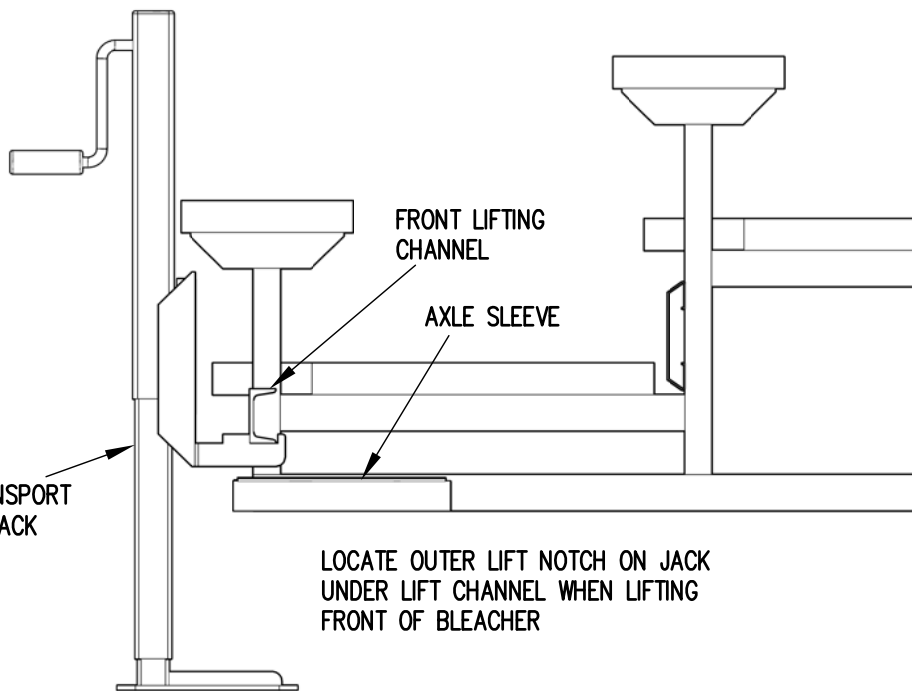
FRONT LIFTING CHANNEL

WHEEL AND AXLE ASSEMBLY



TRANSPORT JACK

FRONT LIFTING CHANNEL

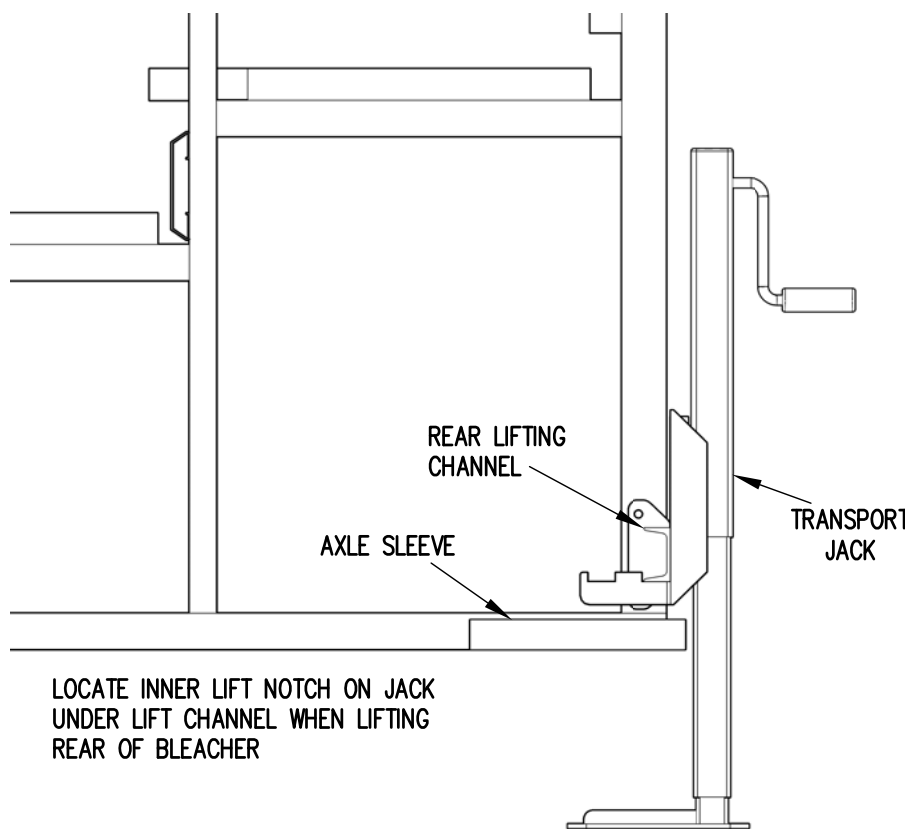


FRONT LIFTING CHANNEL

AXLE SLEEVE

TRANSPORT JACK

LOCATE OUTER LIFT NOTCH ON JACK UNDER LIFT CHANNEL WHEN LIFTING FRONT OF BLEACHER

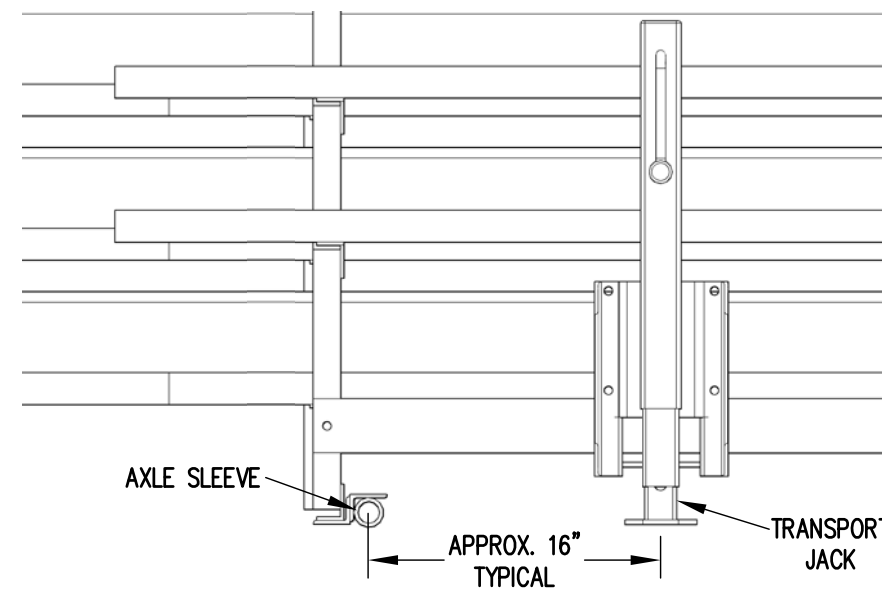


REAR LIFTING CHANNEL

AXLE SLEEVE

TRANSPORT JACK

LOCATE INNER LIFT NOTCH ON JACK UNDER LIFT CHANNEL WHEN LIFTING REAR OF BLEACHER



AXLE SLEEVE

APPROX. 16" TYPICAL

TRANSPORT JACK



Park Warehouse

SCALE	N.T.S.	REVISIONS	BY	DATE
DATE	10/16/14			
DR'N	ADK	CKD		
AP'VD	ADK			
TITLE	129-1188-3		NO. 129-1188-3	