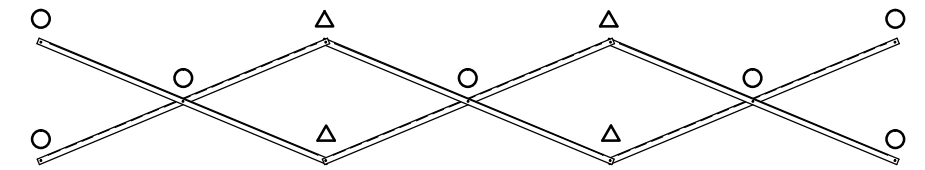


SEATING & FRAMING PLAN

1/4" = 1'-0"
54 NET SEATS @ 18" PER SEAT

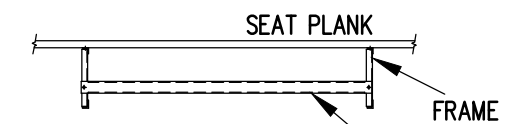
- DENOTES AXLE SLEEVE LOCATIONS
- ▷ DENOTES TONGUE GUIDE LOCATIONS



X-BRACE DETAIL

N.T.S.

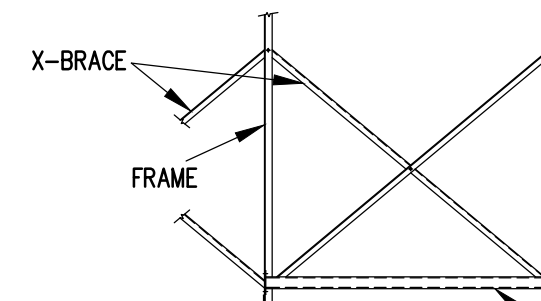
- 7/16" X 1" GALV. MACH. BOLT
- △ 7/16" X 1.1/2" GALV. MACH. BOLT



VIEW CC

N.T.S.

700-MC100 - ATTACH WITH
(2) 7/16" x 1" GALV.
MACH. BOLT.



VIEW DD

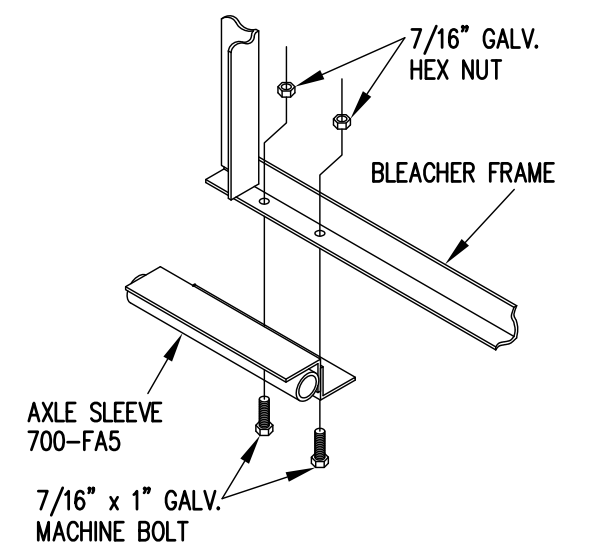
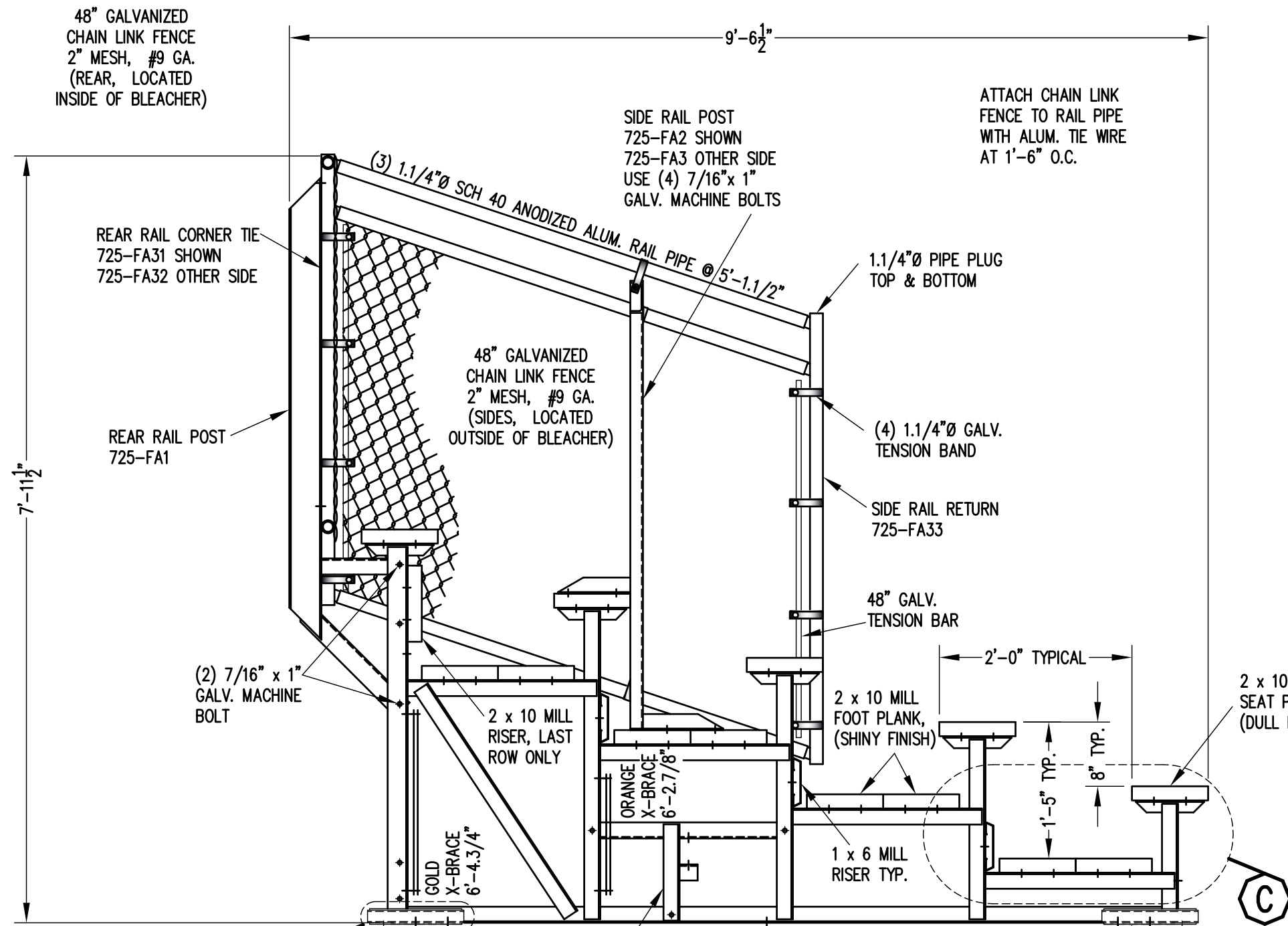
N.T.S.

700-FA4 - ATTACH WITH
(4) 7/16" x 1" GALV.
MACH. BOLT

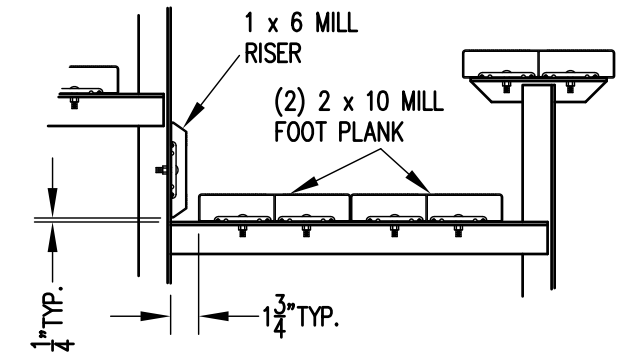


Park Warehouse

SCALE	AS NOTED	REVISIONS	BY	DATE
DATE	11/2/11			
DR'N	CDK	CKD		
AP'VD				
TITLE	129-1188-2		NO.	129-1188-2



AXLE SLEEVE DETAIL S
1" = 1'-0"



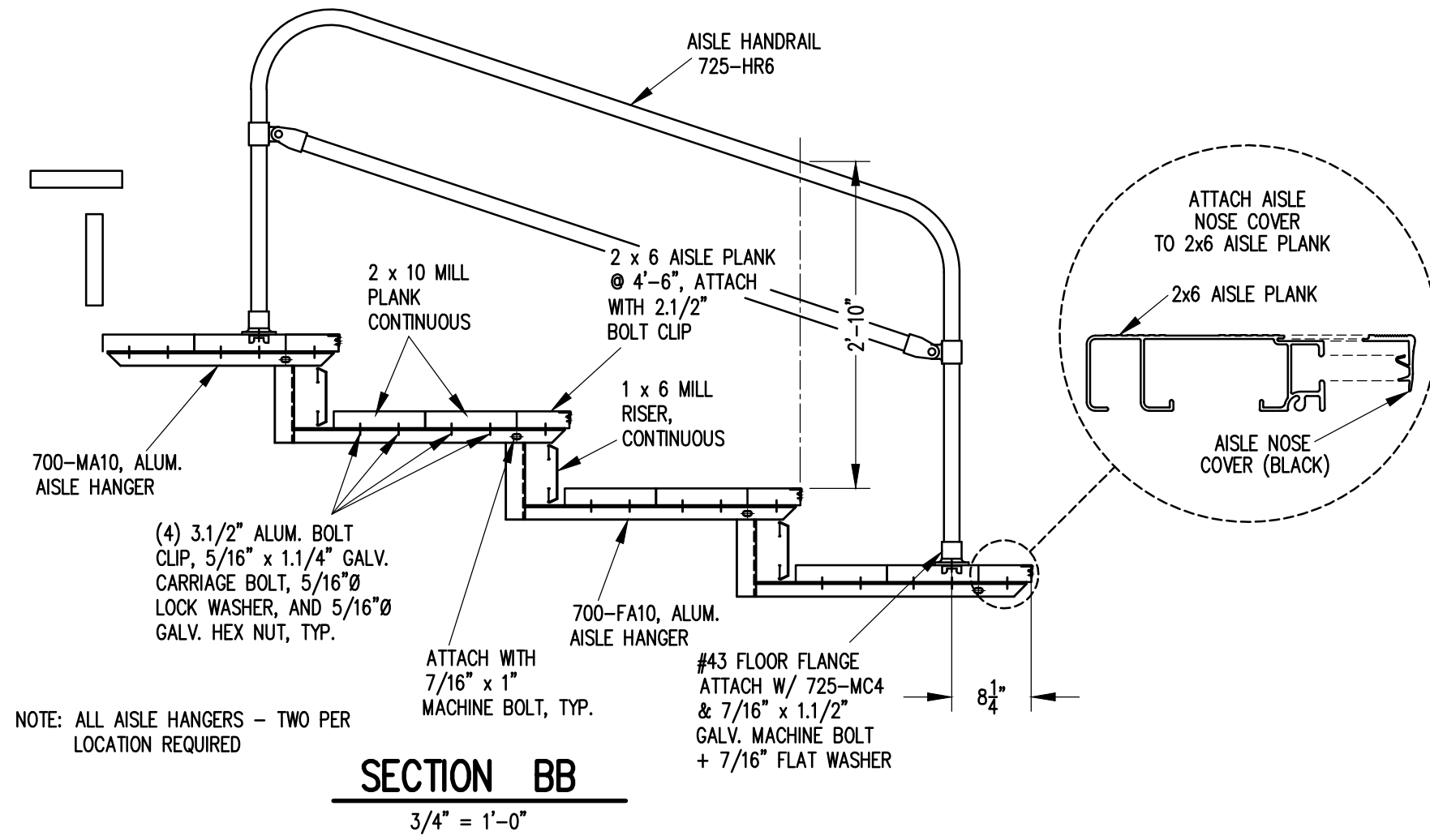
DETAIL C
1" = 1'-0"


'T TONGUE GUIDE
700-FA1
ATTACH W/ (3) 7/16" x 1"
GALV. MACHINE BOLTS
SEE FRAMING PLAN FOR
LOCATIONS.

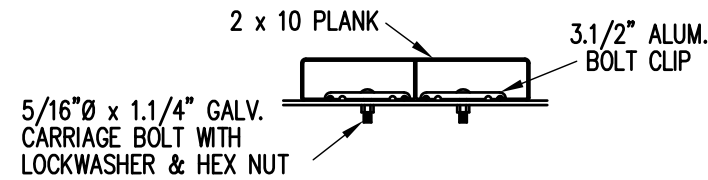
AXLE SLEEVE
700-FA5
ATTACH W/ (2) 7/16" x 1"
GALV. MACHINE BOLTS
SEE FRAMING PLAN FOR
LOCATIONS.

SECTION AA
3/4" = 1'-0"

		Park Warehouse	
SCALE	AS NOTED	REVISIONS	BY DATE
DATE	11/2/11		
DR'N	ADK CKD		
AP'VD			
TITLE	129-1188-2		NO. 129-1188-2



		Park Warehouse	
SCALE	3/4"=1'-0"	REVISIONS	BY DATE
DATE	11/2/11		
DR'N	CDK CKD		
AP'VD			
TITLE	129-1188-2		NO. 129-1188-2



BOLT CLIP DETAIL

1.1/2" = 1'-0"

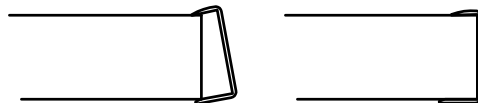


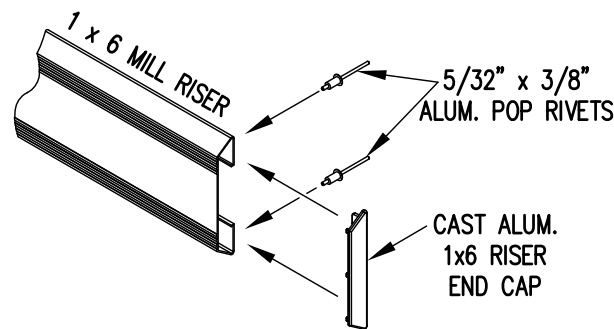
FIG.1

FIG.2

- 1) LOCATE THE CHANNEL END CAP AS SHOWN IN FIG. 1.
- 2) TAP END CAP INTO PLACE WITH RUBBER Mallet OR SOFT WOOD. FIG.2
- 3) DRILL 5/32" HOLES THROUGH THE BOTTOM FLANGE AND THE BOTTOM OUTSIDE PLANK FLANGES OF EACH PLANK. INSTALL 5/32" POP RIVETS.

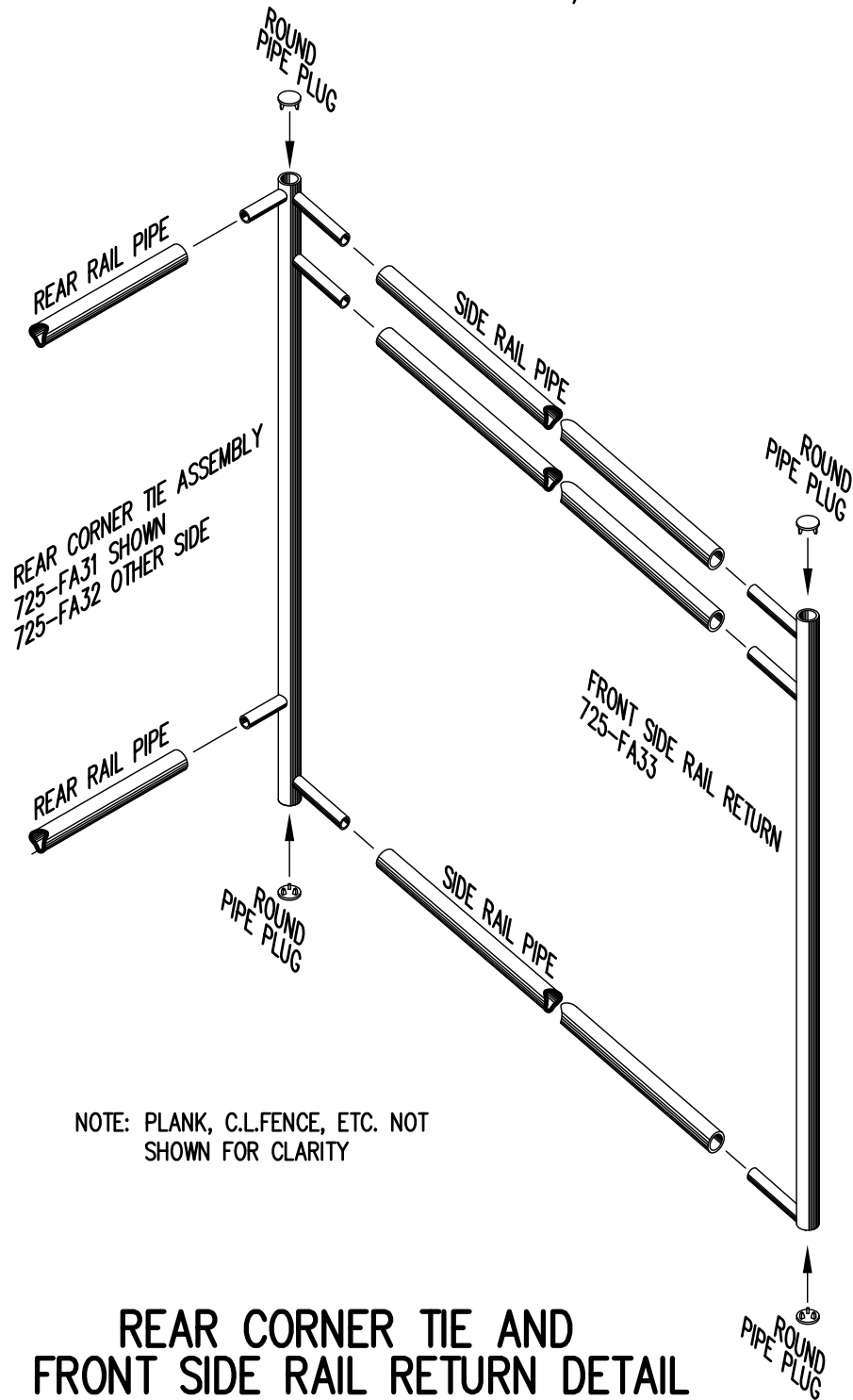
END CAP DETAIL

N.T.S.



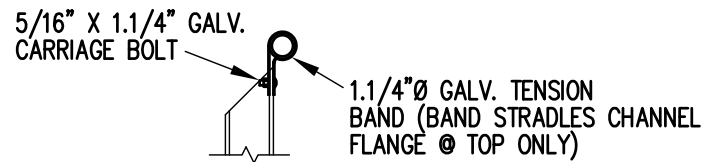
1 x 6 RISER END CAP

N.T.S.

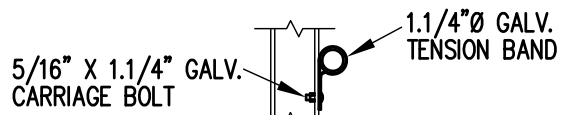


REAR CORNER TIE AND FRONT SIDE RAIL RETURN DETAIL

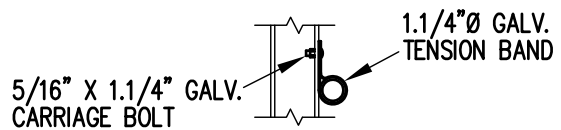
3/4" = 1'-0"



TOP RAIL

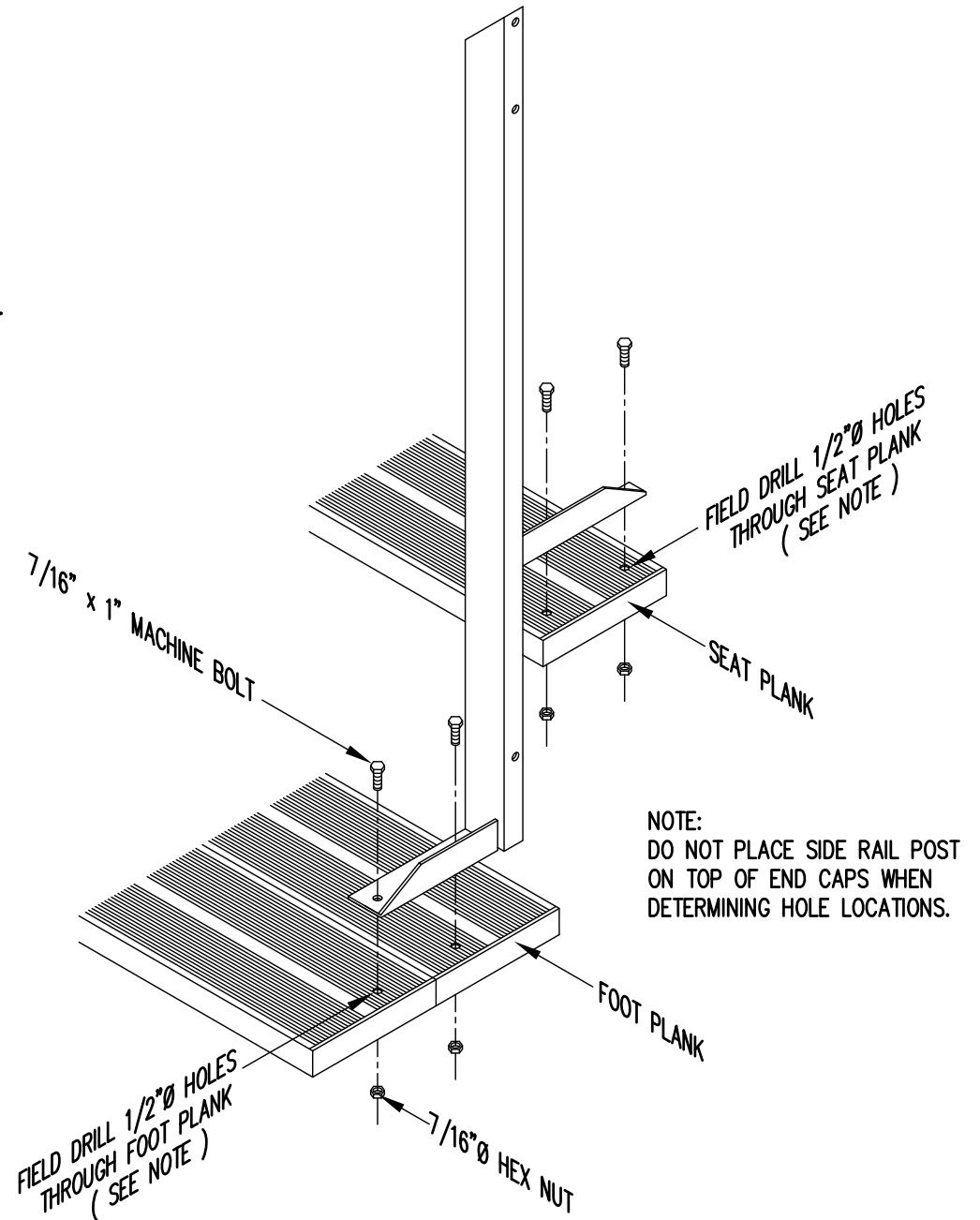


2ND RAIL



BOTTOM RAIL

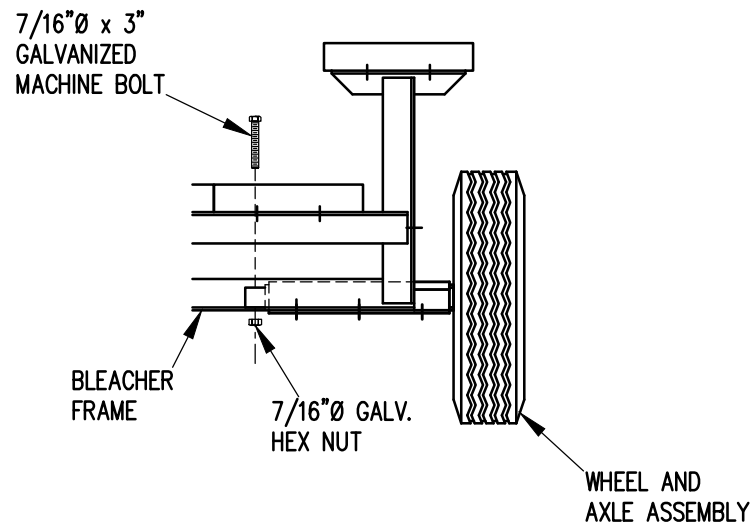
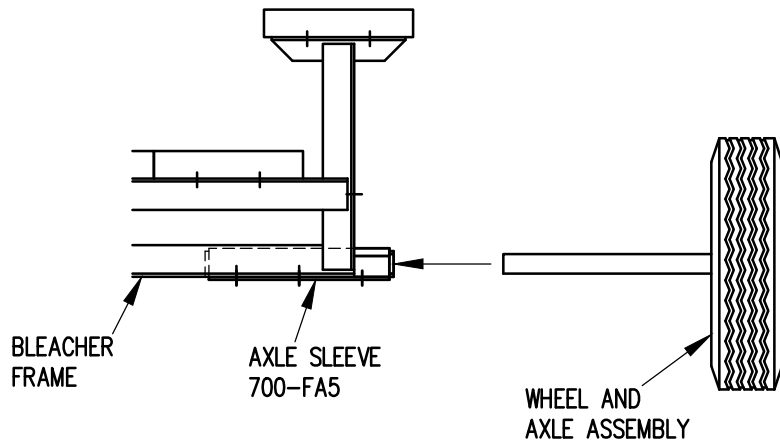
RAIL PIPE ATTACHMENT



TYP. SIDE RAIL POST ATTACHMENT

1" = 1'-0"

		Park Warehouse	
SCALE	AS NOTED	REVISIONS	BY DATE
DATE	11/2/11		
DR'N	ADK CKD		
AP'VD			
TITLE	129-1188-2		NO. 129-1188-2

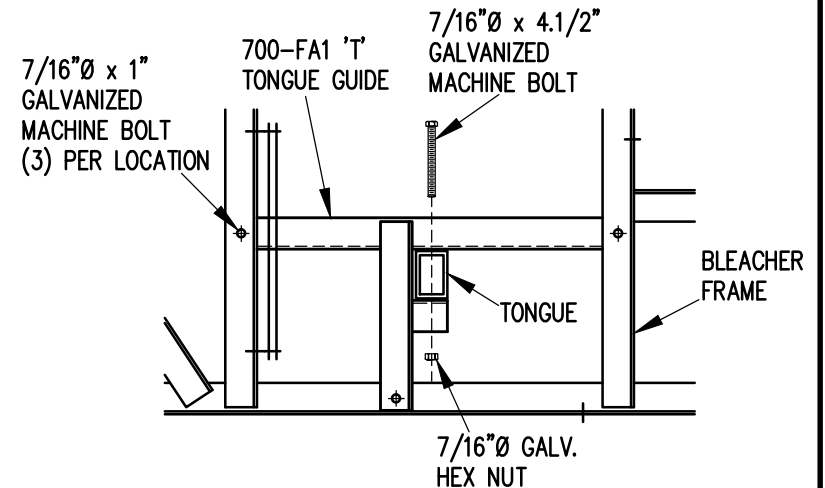


1. ELEVATE BLEACHER TO RECEIVE WHEEL UNITS.
2. INSERT WHEEL AND AXLE ASSEMBLY INTO AXLE SLEEVE AS SHOWN.
3. INSERT 7/16" X 3" GALVANIZED MACHINE BOLT THROUGH AXLE TO SECURE IN AXLE SLEEVE.

WHEEL AND AXLE ATTACHMENT

1" = 1'-0"

NOTE: SEE FRAMING PLAN FOR LOCATION OF AXLE SLEEVES AND TONGUE GUIDES.



1. INSERT TONGUE THROUGH TONGUE GUIDES.
2. ATTACH TONGUE TO TONGUE BRACKETS WITH 7/16" X 4.1/2" GALVANIZED MACHINE BOLTS AS SHOWN.
3. TIGHTEN SECURELY.

TONGUE ATTACHMENT

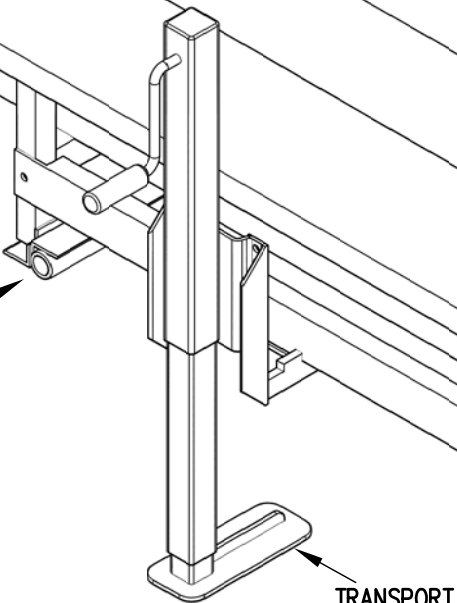
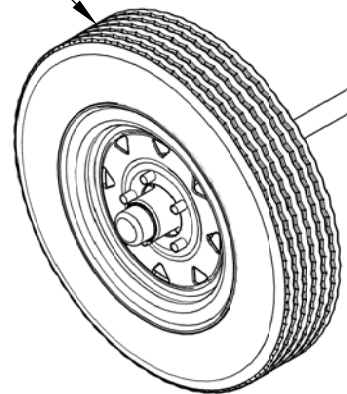
1" = 1'-0"



Park Warehouse

SCALE	1"=1'-0"	REVISIONS	BY	DATE
DATE	11/2/11			
DR'N	ADK	CKD		
AP'VD				
TITLE	129-1188-2		NO.	129-1188-2

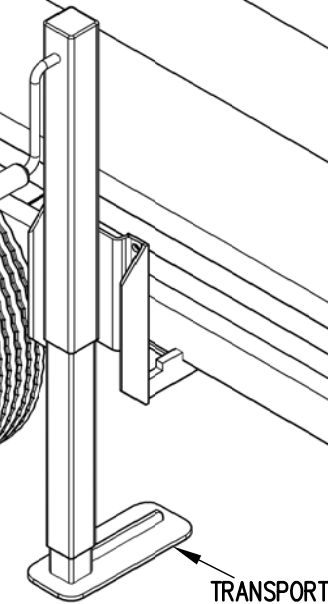
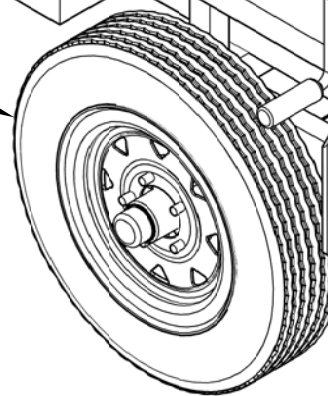
WHEEL AND AXLE ASSEMBLY



TRANSPORT JACK

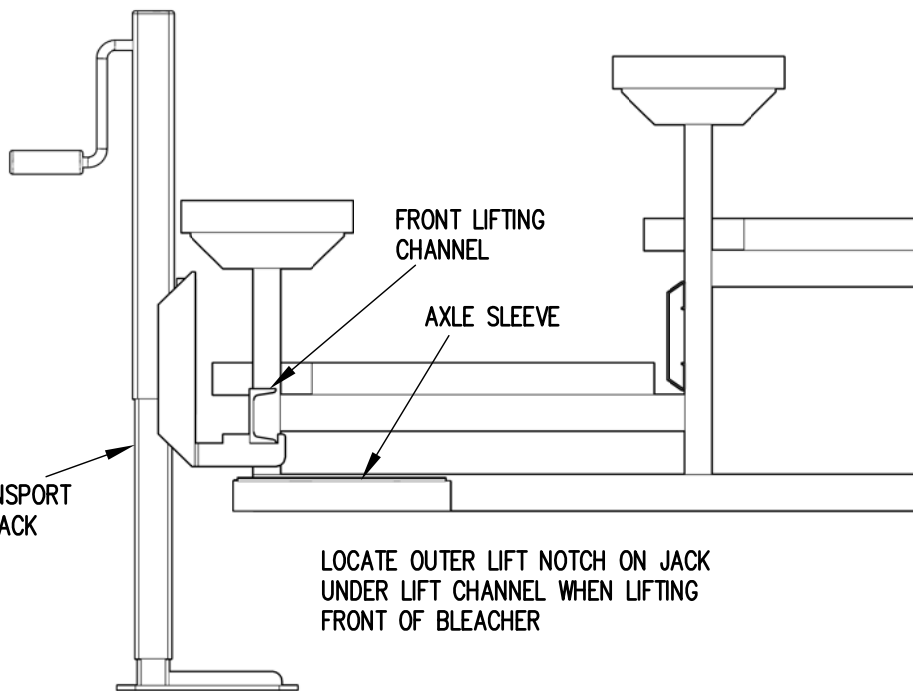
FRONT LIFTING CHANNEL

WHEEL AND AXLE ASSEMBLY

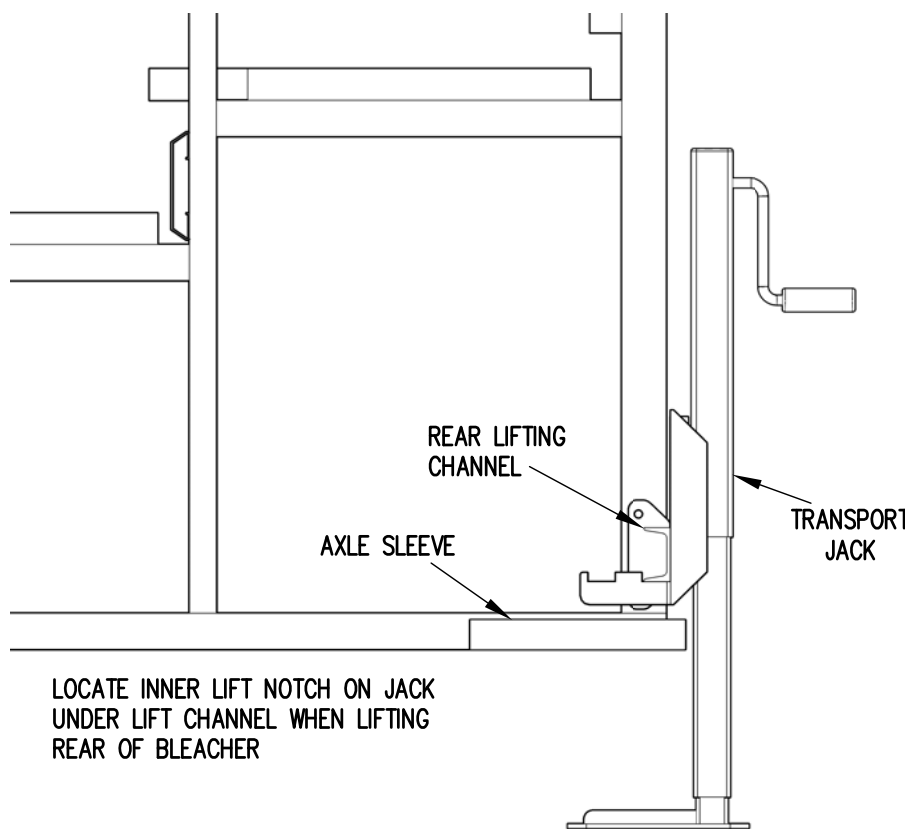


TRANSPORT JACK

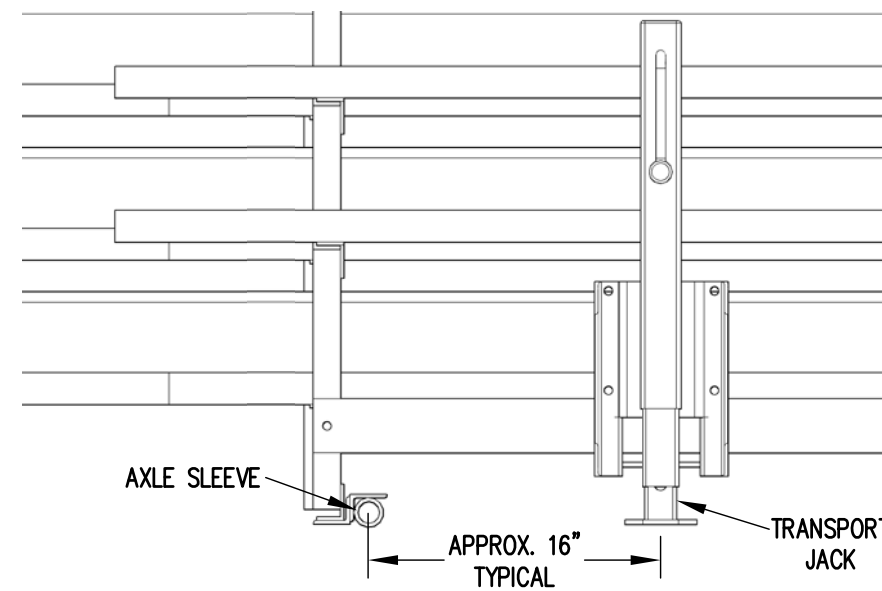
FRONT LIFTING CHANNEL



LOCATE OUTER LIFT NOTCH ON JACK UNDER LIFT CHANNEL WHEN LIFTING FRONT OF BLEACHER



LOCATE INNER LIFT NOTCH ON JACK UNDER LIFT CHANNEL WHEN LIFTING REAR OF BLEACHER



Park Warehouse

SCALE	N.T.S.	REVISIONS	BY	DATE
DATE	10/16/14			
DR'N	ADK	CKD		
AP'VD	ADK			
TITLE	129-1188-2		NO.	129-1188-2