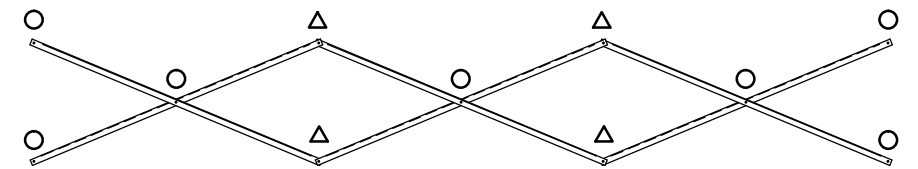


### SEATING & FRAMING PLAN

1/4" = 1'-0"  
42 NET SEATS @ 18" PER SEAT

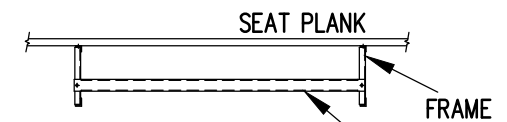
- DENOTES AXLE SLEEVE LOCATIONS
- ▷ DENOTES TONGUE GUIDE LOCATIONS



### X-BRACE DETAIL

N.T.S.

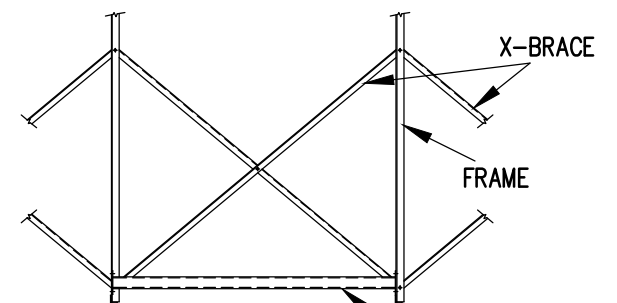
- 7/16" X 1" GALV. MACH. BOLT
- △ 7/16" X 1.1/2" GALV. MACH. BOLT



### VIEW CC

N.T.S.

700-MC99 - ATTACH WITH (2) 7/16" x 1" GALV. MACH. BOLT.



### VIEW DD

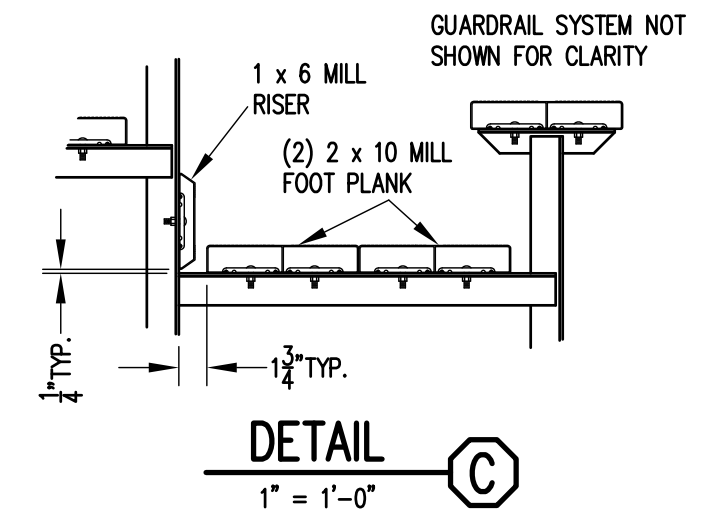
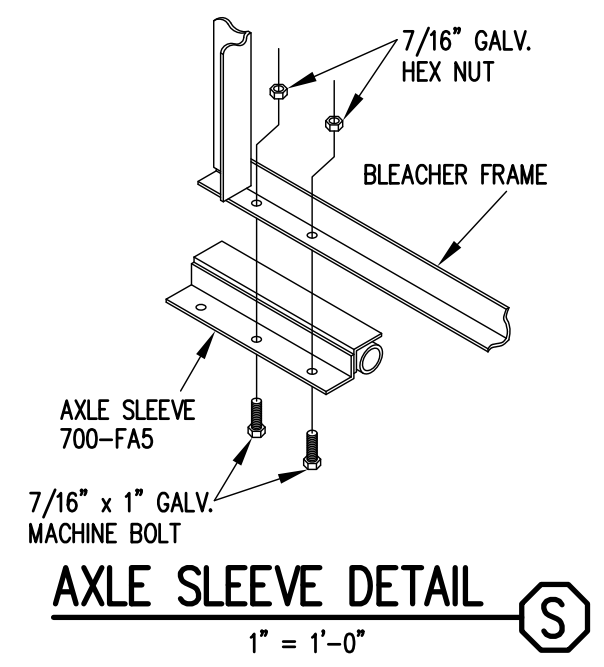
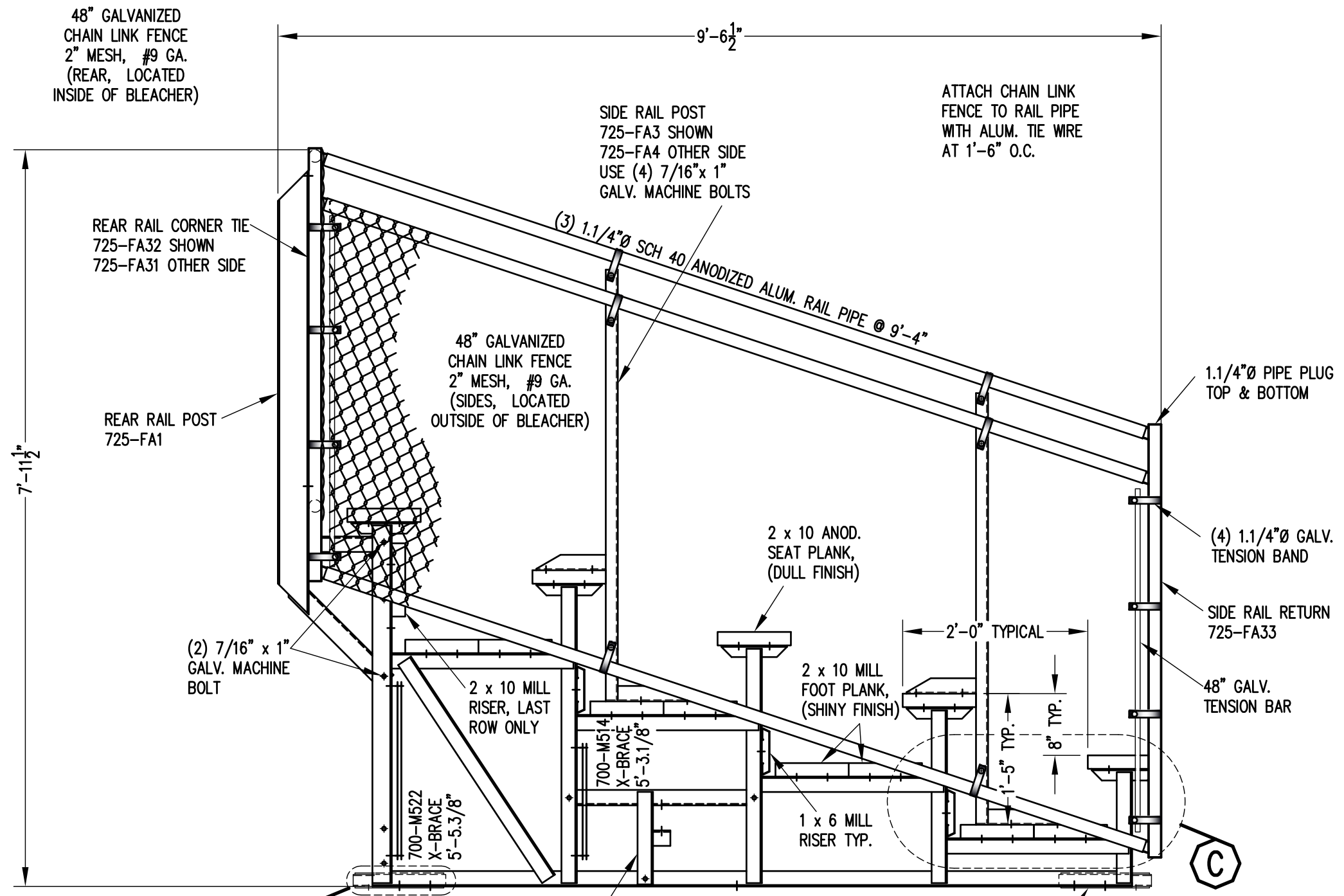
N.T.S.

700-FA3 - ATTACH WITH (4) 7/16" x 1" GALV. MACH. BOLT



## Park Warehouse

SCALE	AS NOTED	REVISIONS	BY	DATE
DATE	11/2/11			
DR'N	CDK	CKD		
AP'VD				
TITLE	129-1188-1		NO.	129-1188-1



**VIEW AA**  
 3/4" = 1'-0"

**VIEW AA**  
 3/4" = 1'-0"

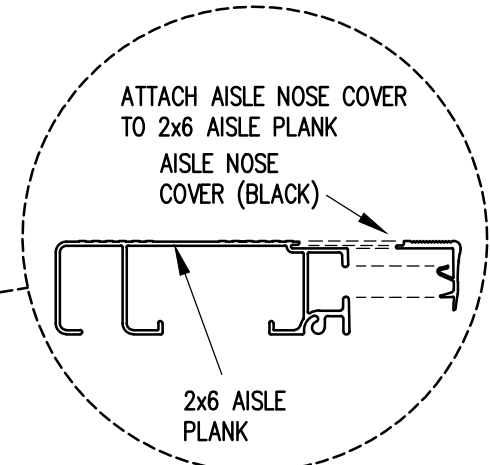
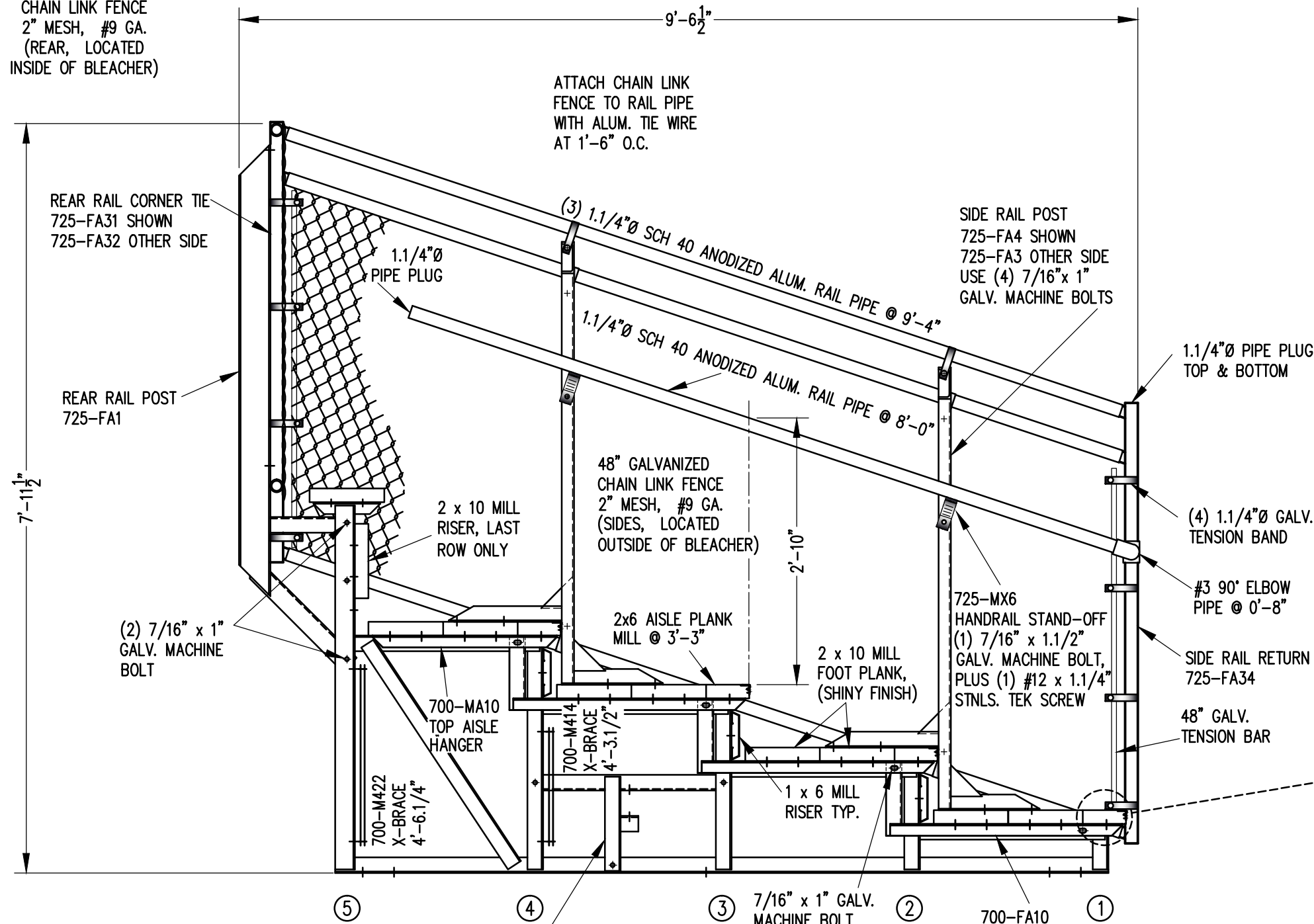
**VIEW AA**  
 3/4" = 1'-0"

'T' TONGUE GUIDE  
 700-FA1  
 ATTACH W/ (3) 7/16" x 1"  
 GALV. MACHINE BOLTS  
 SEE FRAMING PLAN FOR  
 LOCATIONS.

AXLE SLEEVE  
 700-FA5  
 ATTACH W/ (2) 7/16" x 1"  
 GALV. MACHINE BOLTS  
 SEE FRAMING PLAN FOR  
 LOCATIONS.

		<b>Park Warehouse</b>	
SCALE	AS NOTED	REVISIONS	BY DATE
DATE	11/2/11		
DR'N	ADK CKD		
AP'VD			
TITLE	129-1188-1		NO. 129-1188-1


48" GALVANIZED  
CHAIN LINK FENCE  
2" MESH, #9 GA.  
(REAR, LOCATED  
INSIDE OF BLEACHER)

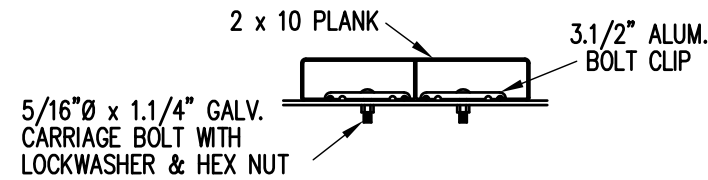


NOTE: ALL AISLE HANGERS - TWO PER  
LOCATION REQUIRED, TYPICAL

'T' TONGUE GUIDE  
700-FA1  
ATTACH W/ (3) 7/16" x 1"  
GALV. MACHINE BOLTS  
SEE FRAMING PLAN FOR  
LOCATIONS.

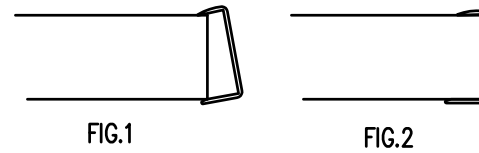
**SECTION BB**  
3/4" = 1'-0"

		<b>Park Warehouse</b>	
SCALE	AS NOTED	REVISIONS	BY DATE
DATE	11/2/11		
DR'N	CDK CKD		
AP'VD			
TITLE	129-1188-1		NO. 129-1188-1



**BOLT CLIP DETAIL**

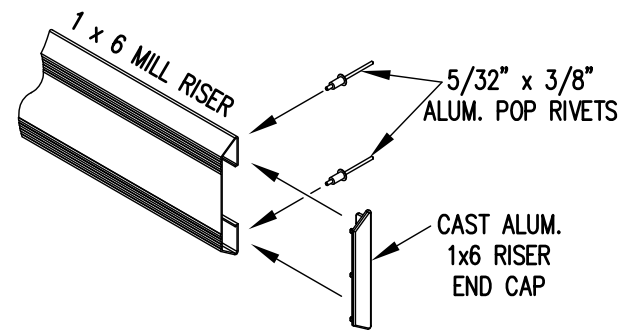
1.1/2" = 1'-0"



- 1) LOCATE THE CHANNEL END CAP AS SHOWN IN FIG. 1.
- 2) TAP END CAP INTO PLACE WITH RUBBER Mallet OR SOFT WOOD. FIG.2
- 3) DRILL 5/32" HOLES THROUGH THE BOTTOM FLANGE AND THE BOTTOM OUTSIDE PLANK FLANGES OF EACH PLANK. INSTALL 5/32" POP RIVETS.

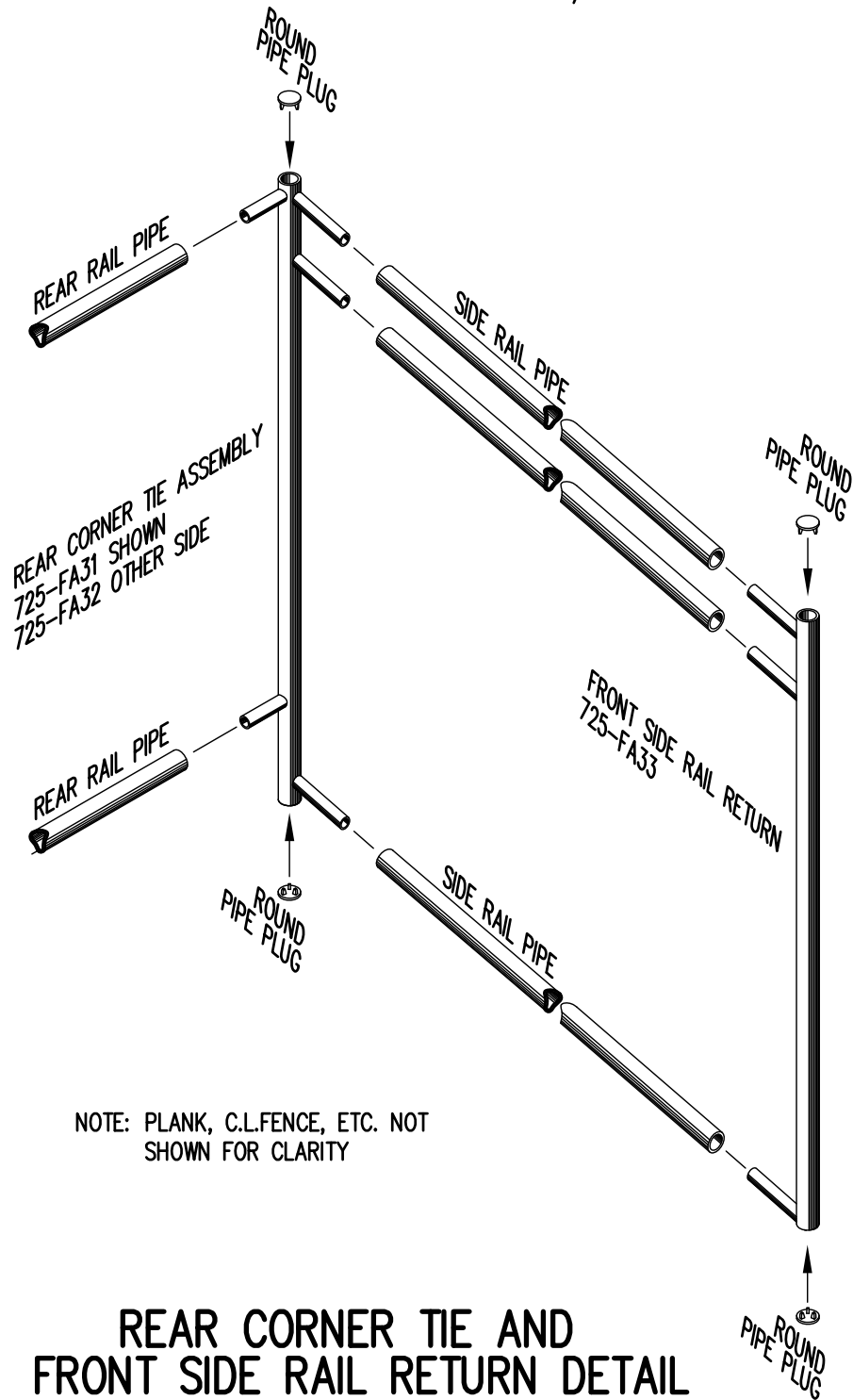
**END CAP DETAIL**

N.T.S.



**1 x 6 RISER END CAP**

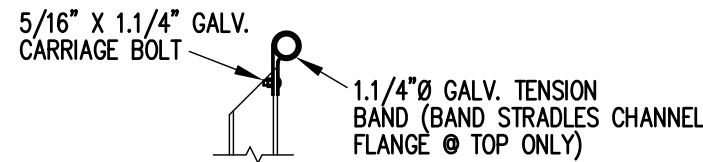
N.T.S.



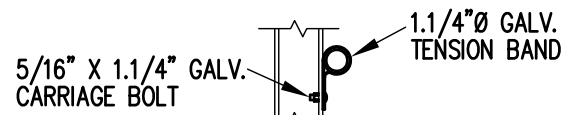
**REAR CORNER TIE AND FRONT SIDE RAIL RETURN DETAIL**

3/4" = 1'-0"

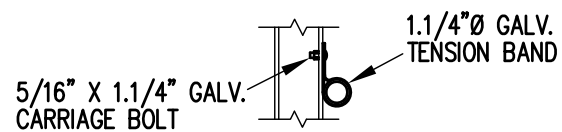
NOTE: PLANK, C.L.FENCE, ETC. NOT SHOWN FOR CLARITY



**TOP RAIL**

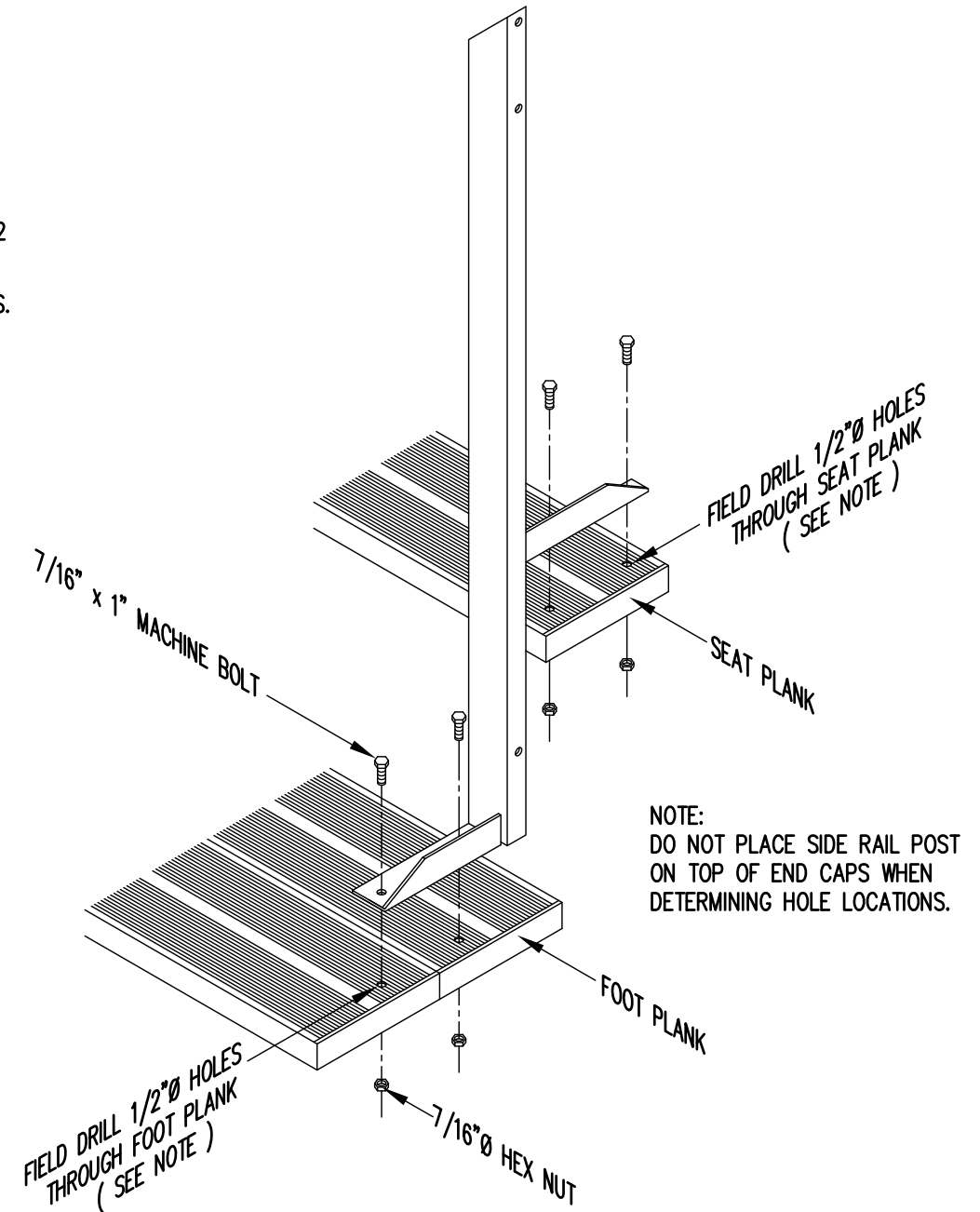


**2ND RAIL**



**BOTTOM RAIL**

**RAIL PIPE ATTACHMENT**

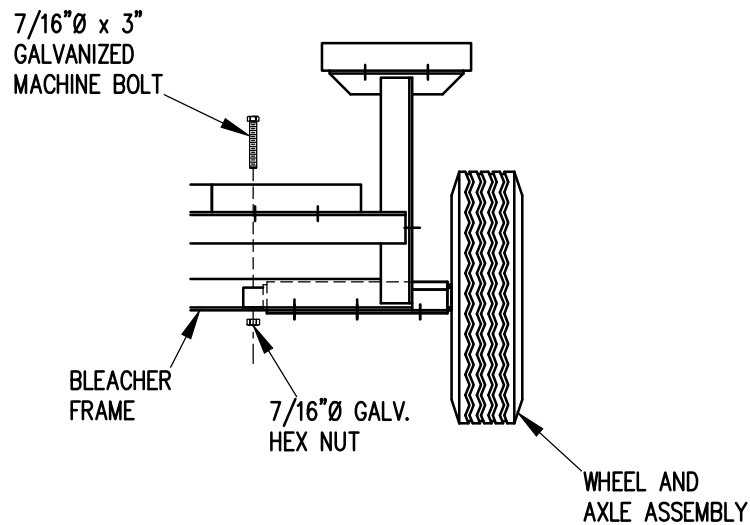
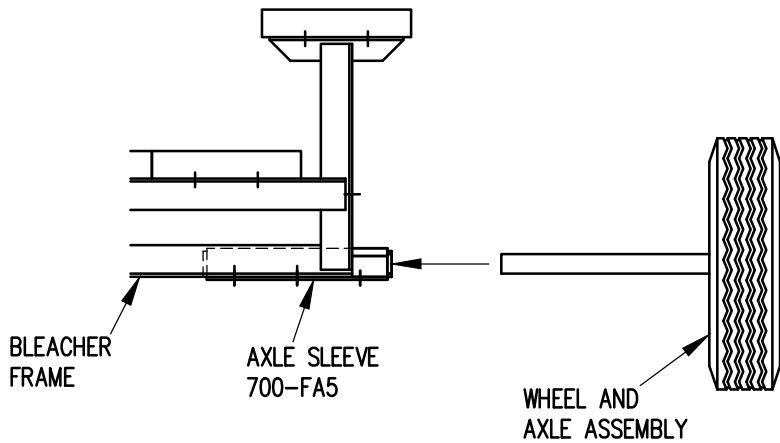


**TYP. SIDE RAIL POST ATTACHMENT**

1" = 1'-0"

NOTE: DO NOT PLACE SIDE RAIL POST ON TOP OF END CAPS WHEN DETERMINING HOLE LOCATIONS.

		Park Warehouse	
SCALE	AS NOTED	REVISIONS	BY DATE
DATE	11/2/11		
DR'N	ADK CKD		
AP'VD			
TITLE	129-1188-1		NO. 129-1188-1

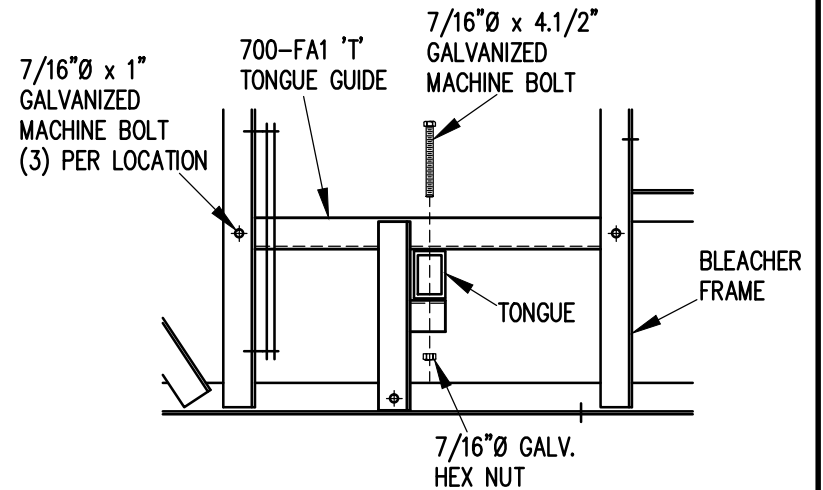


1. ELEVATE BLEACHER TO RECEIVE WHEEL UNITS.
2. INSERT WHEEL AND AXLE ASSEMBLY INTO AXLE SLEEVE AS SHOWN.
3. INSERT 7/16" X 3" GALVANIZED MACHINE BOLT THROUGH AXLE TO SECURE IN AXLE SLEEVE.

## WHEEL AND AXLE ATTACHMENT

1" = 1'-0"

NOTE: SEE FRAMING PLAN FOR LOCATION OF AXLE SLEEVES AND TONGUE GUIDES.



1. INSERT TONGUE THROUGH TONGUE GUIDES.
2. ATTACH TONGUE TO TONGUE BRACKETS WITH 7/16" X 4.1/2" GALVANIZED MACHINE BOLTS AS SHOWN.
3. TIGHTEN SECURELY.

## TONGUE ATTACHMENT

1" = 1'-0"

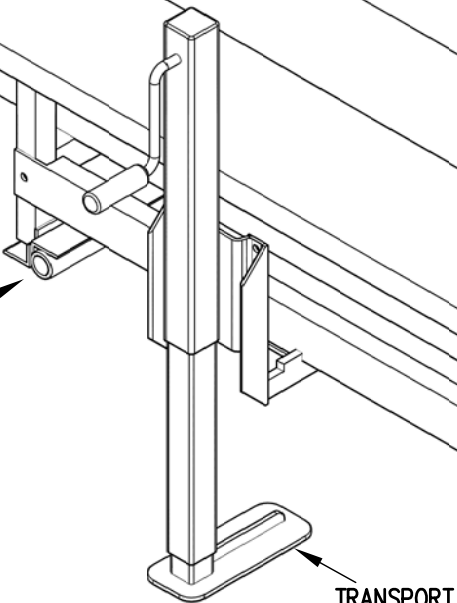
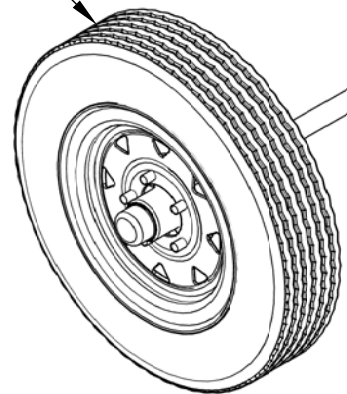


## Park Warehouse

SCALE	1"=1'-0"	REVISIONS	BY	DATE
DATE	11/2/11			
DR'N	ADK	CKD		
AP'VD				
TITLE	129-1188-1		NO.	129-1188-1



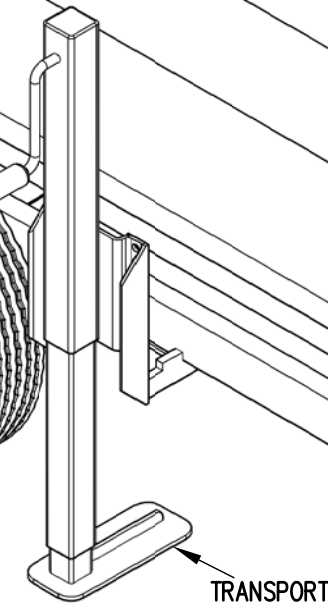
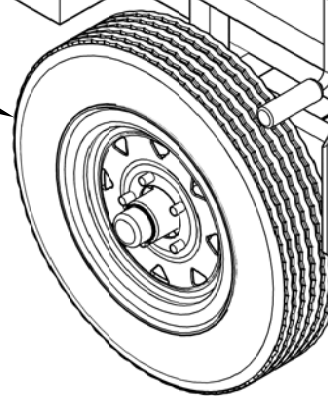
WHEEL AND AXLE ASSEMBLY



TRANSPORT JACK

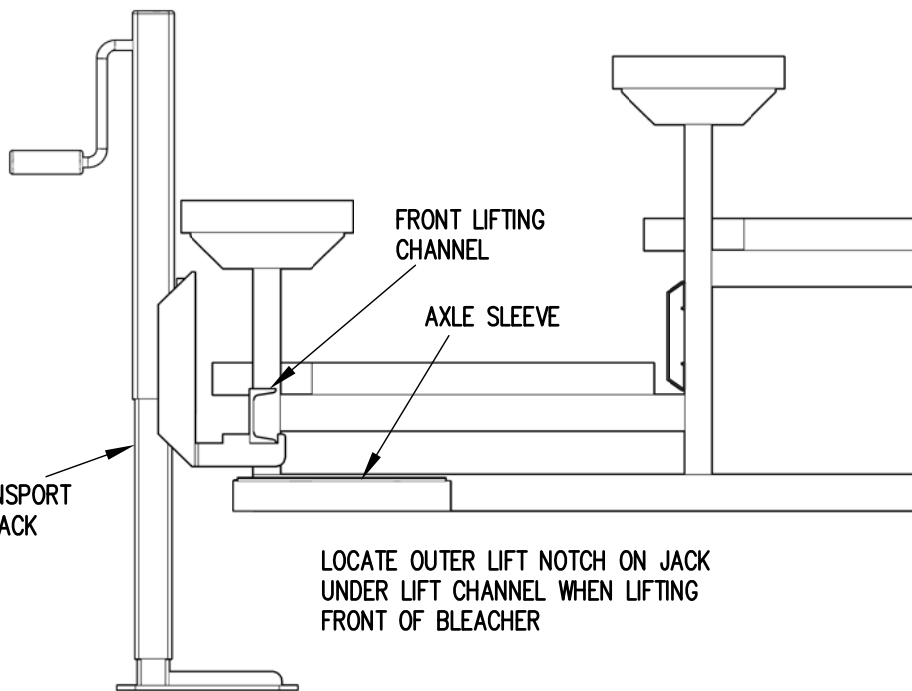
FRONT LIFTING CHANNEL

WHEEL AND AXLE ASSEMBLY



TRANSPORT JACK

FRONT LIFTING CHANNEL

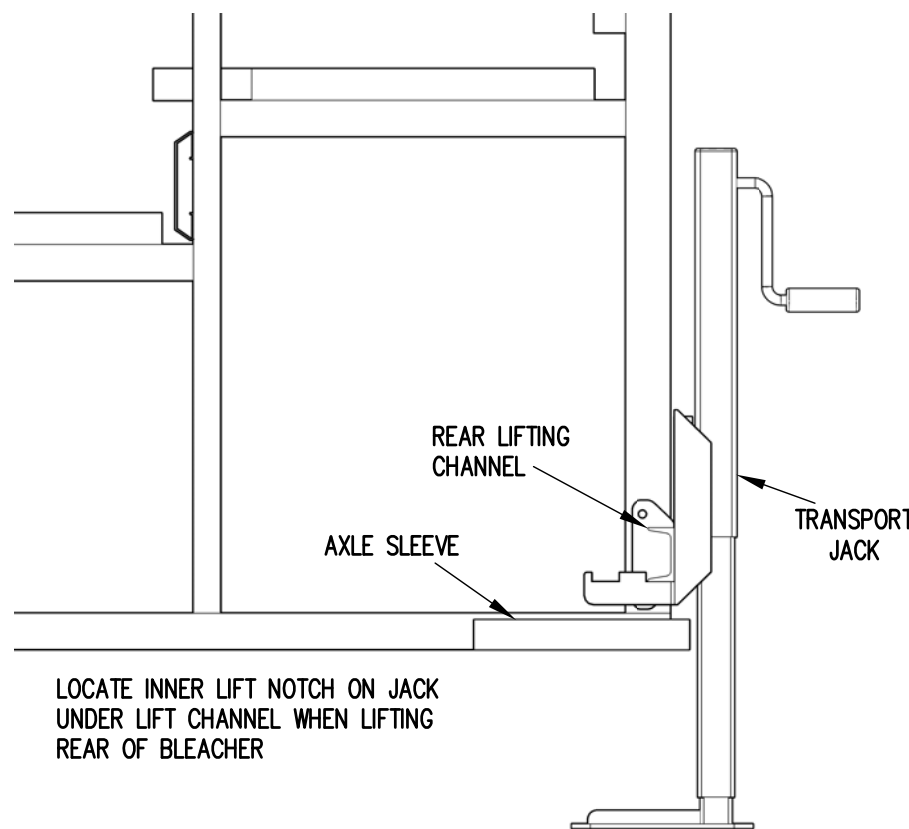


FRONT LIFTING CHANNEL

AXLE SLEEVE

TRANSPORT JACK

LOCATE OUTER LIFT NOTCH ON JACK UNDER LIFT CHANNEL WHEN LIFTING FRONT OF BLEACHER

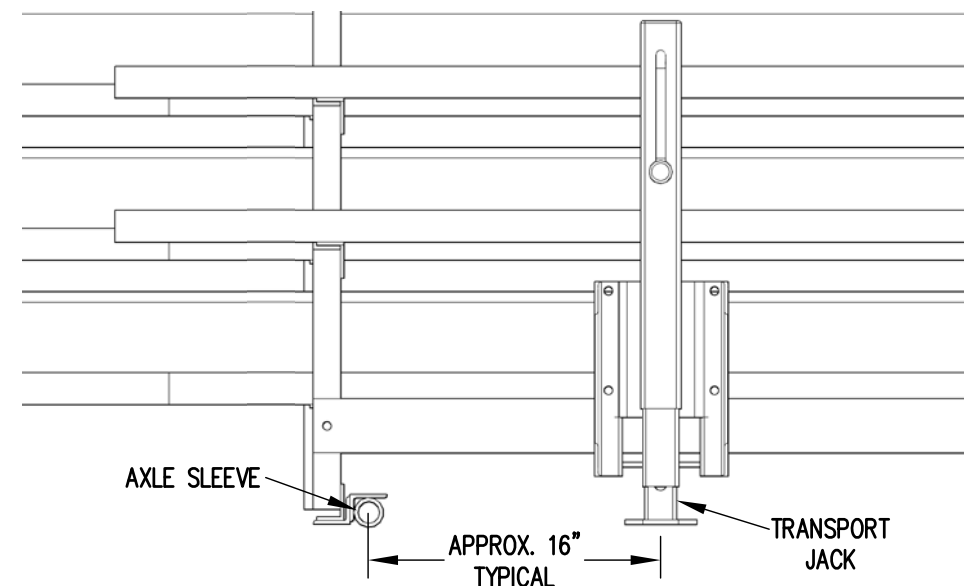


REAR LIFTING CHANNEL

AXLE SLEEVE

TRANSPORT JACK

LOCATE INNER LIFT NOTCH ON JACK UNDER LIFT CHANNEL WHEN LIFTING REAR OF BLEACHER



AXLE SLEEVE

APPROX. 16" TYPICAL

TRANSPORT JACK



Park Warehouse

SCALE	N.T.S.	REVISIONS	BY	DATE
DATE	10/16/14			
DR'N	ADK	CKD		
AP'VD	ADK			
TITLE	129-1188-1		NO.	129-1188-1