
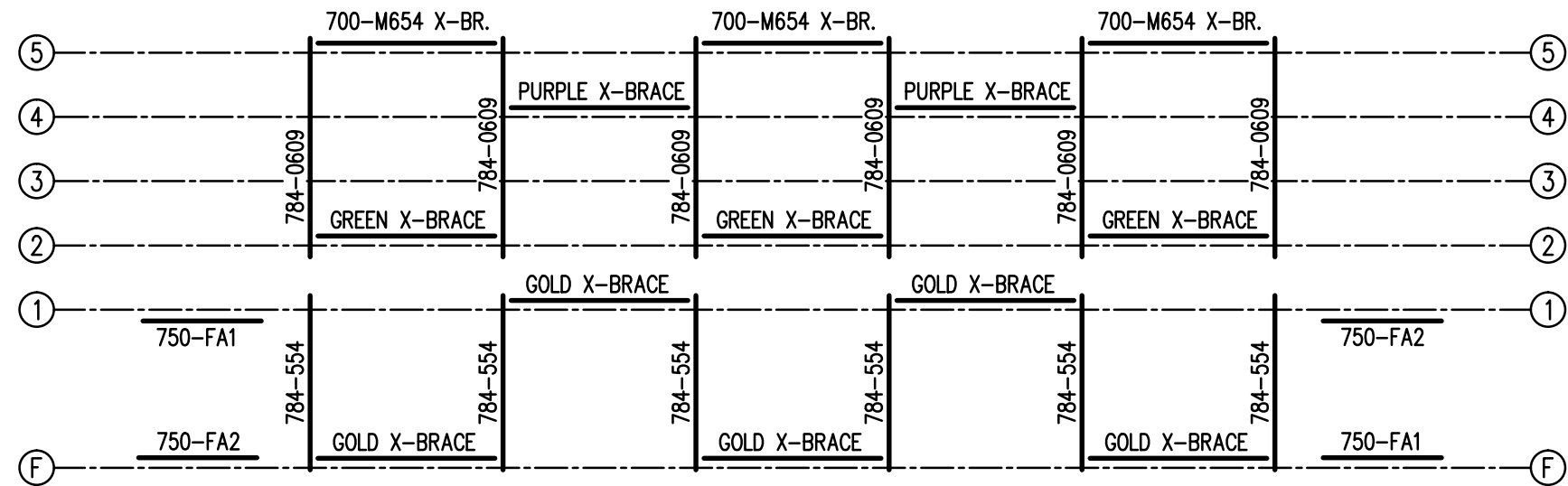


### SEATING PLAN

3/16" = 1'-0"

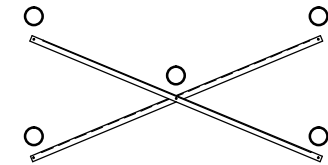
94 NET SEATS @ 18" PER SEAT

		<b>Park Warehouse</b>	
SCALE	3/16"=1'-0"	REVISIONS	BY DATE
DATE	11/2/11		
DR'N	CDK	CKD	
AP'VD			
TITLE	129-1115-3		NO. 129-1115-3



**FRAMING PLAN**

3/16" = 1'-0"




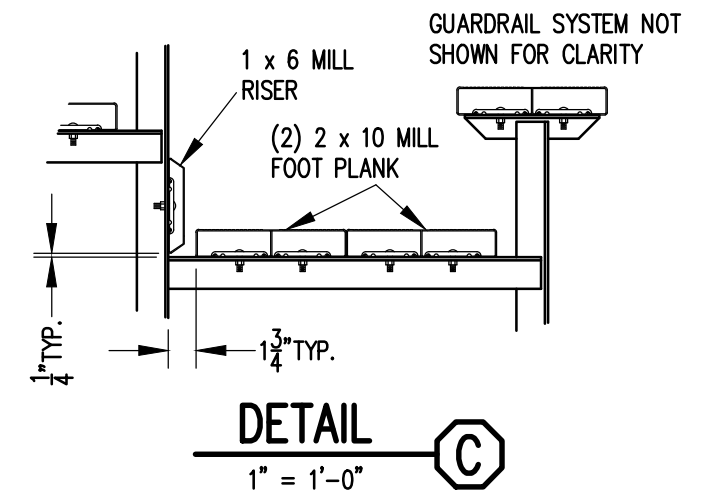
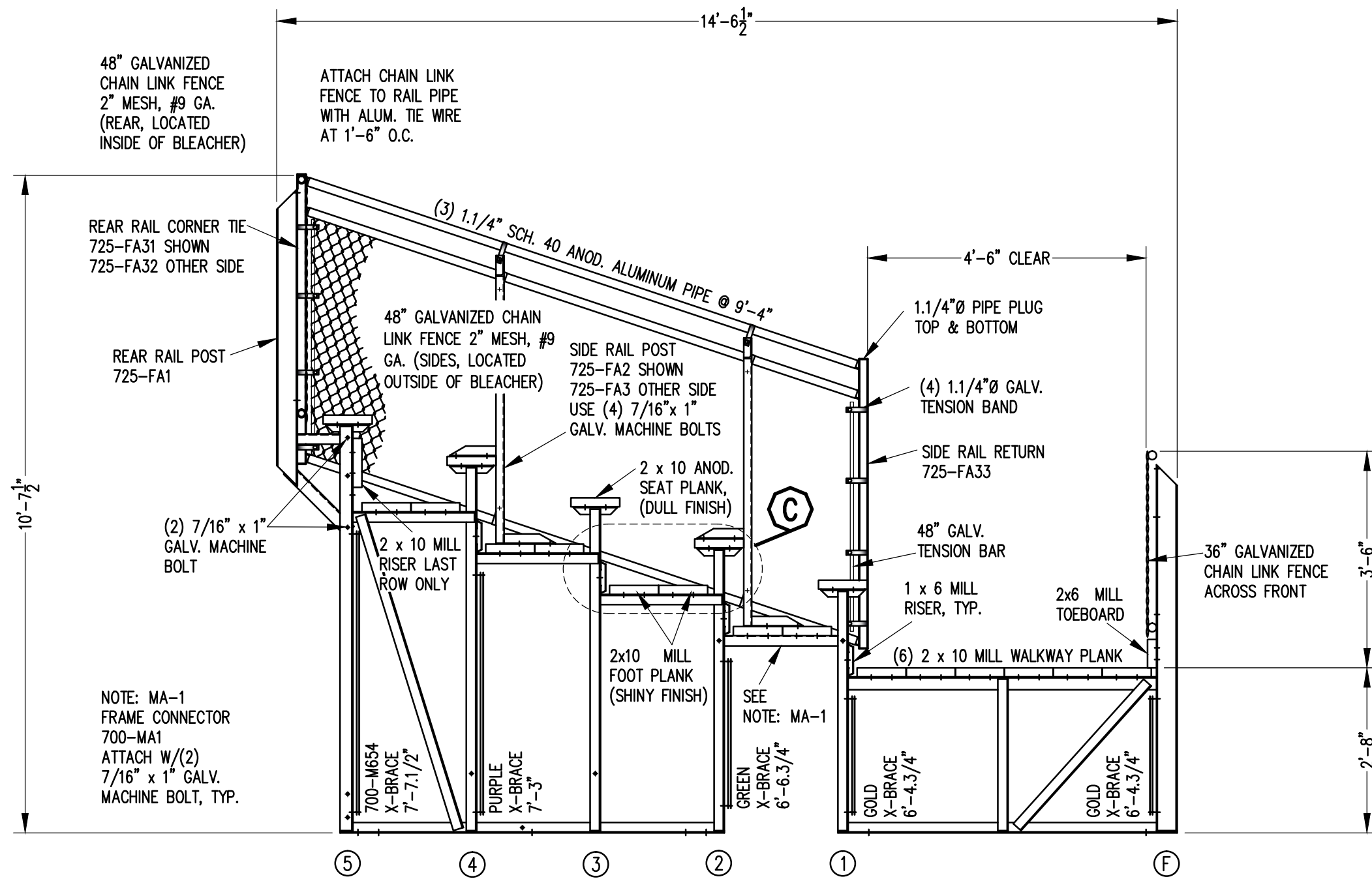
**X-BRACE DETAIL**

N.T.S.

○ 7/16" X 1" GALV. MACH. BOLT

△ 7/16" X 1.1/2" GALV. MACH. BOLT

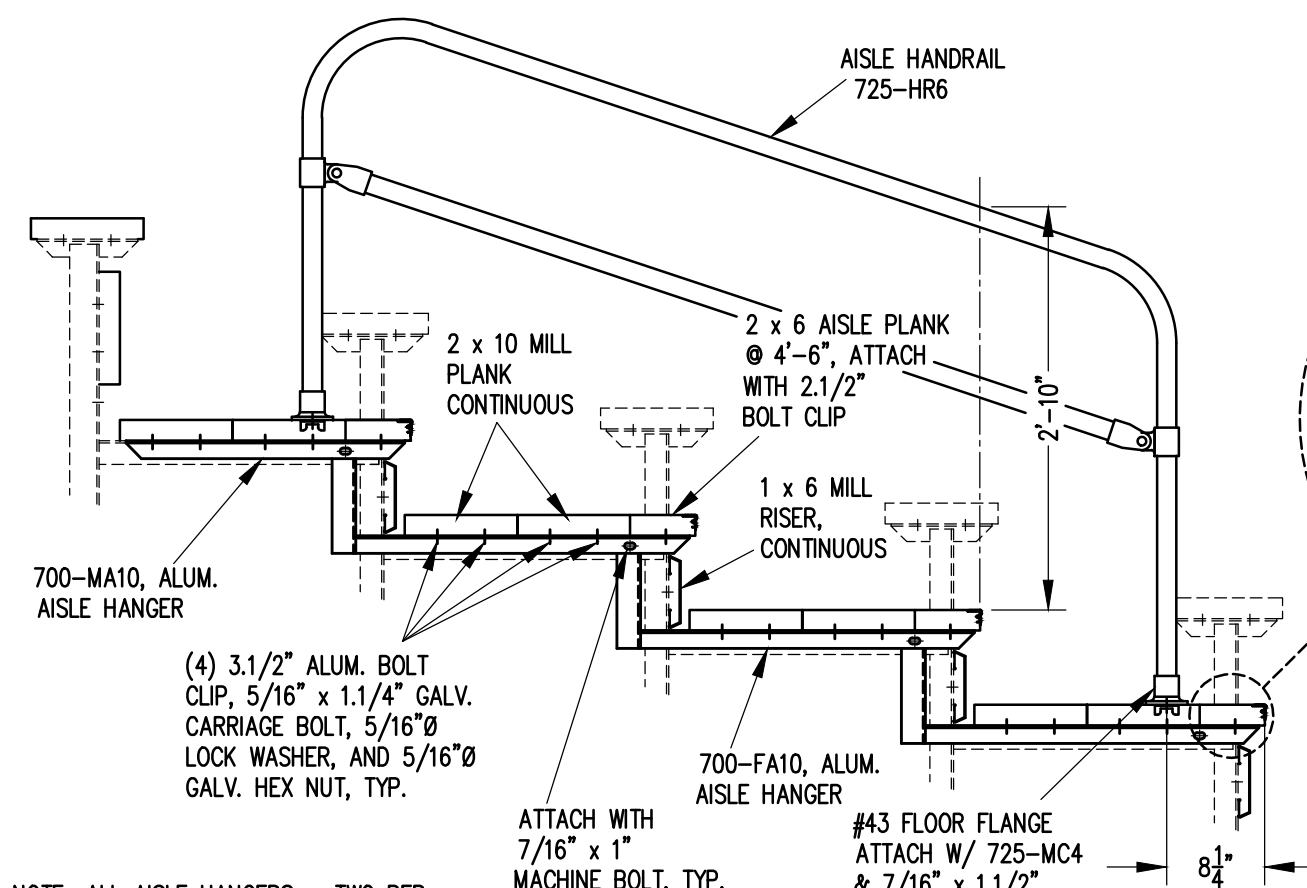
		<b>Park Warehouse</b>	
SCALE	AS NOTED	REVISIONS	BY DATE
DATE	11/2/11		
DR'N	GPK	CKD	
AP'VD			
TITLE	129-1115-3		NO. 129-1115-3



**SECTION AA**

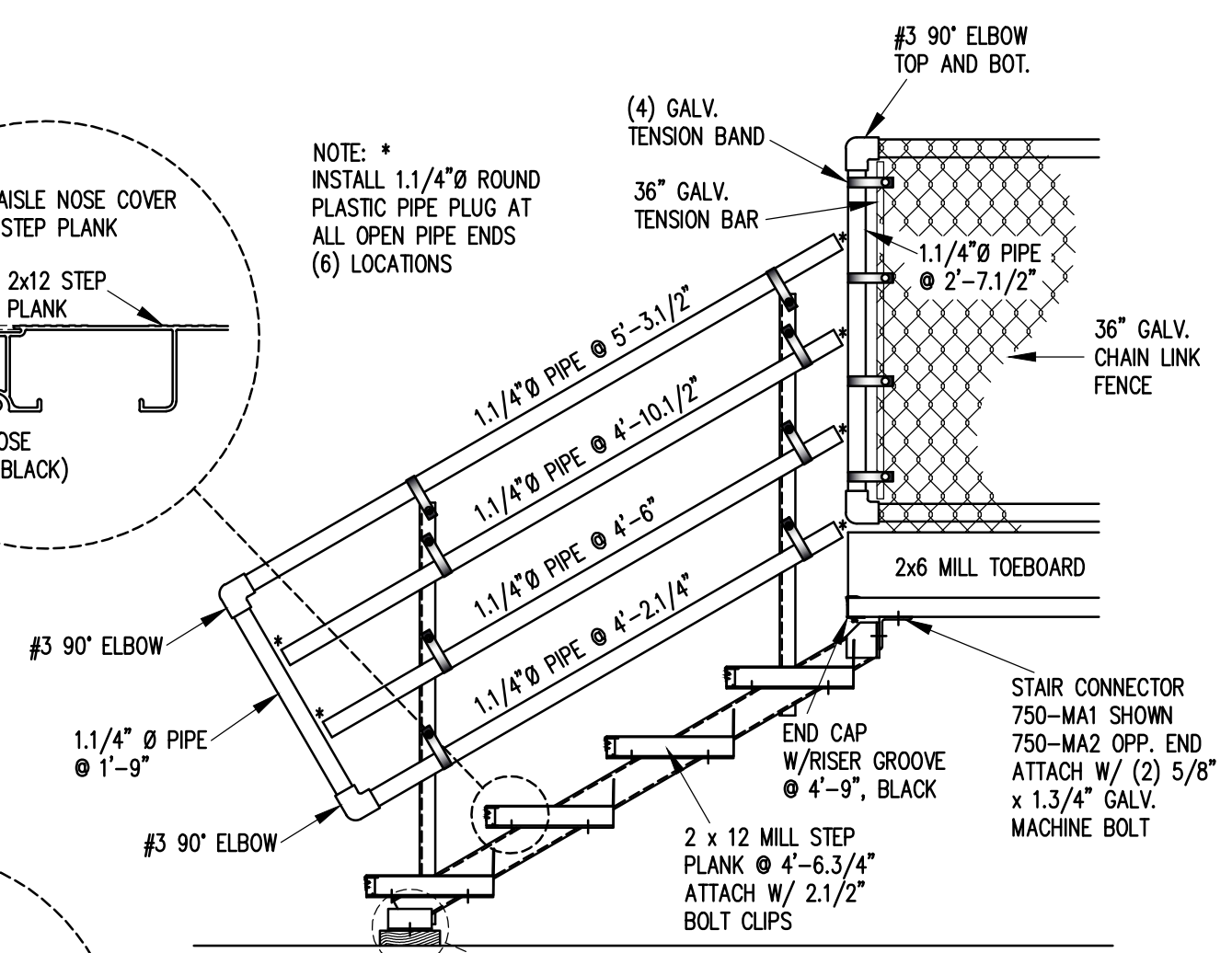
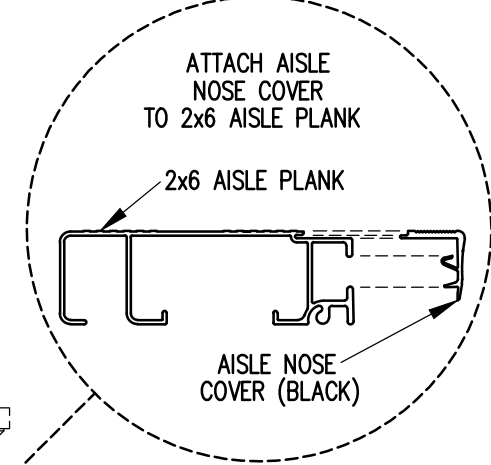
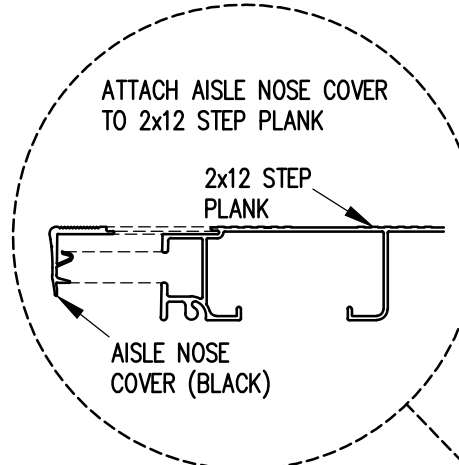
1/2" = 1'-0"

		<b>Park Warehouse</b>	
SCALE	AS NOTED	REVISIONS	BY DATE
DATE	11/2/11		
DR'N	CDK / CKD		
AP'VD			
TITLE	129-1115-3		NO. 129-1115-3



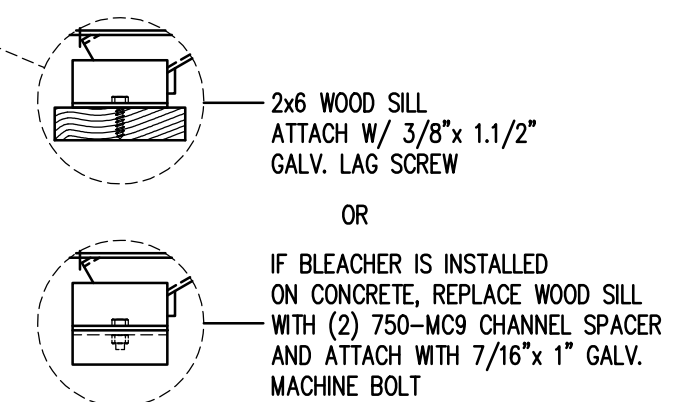
NOTE: ALL AISLE HANGERS - TWO PER LOCATION REQUIRED

**SECTION BB**  
3/4" = 1'-0"

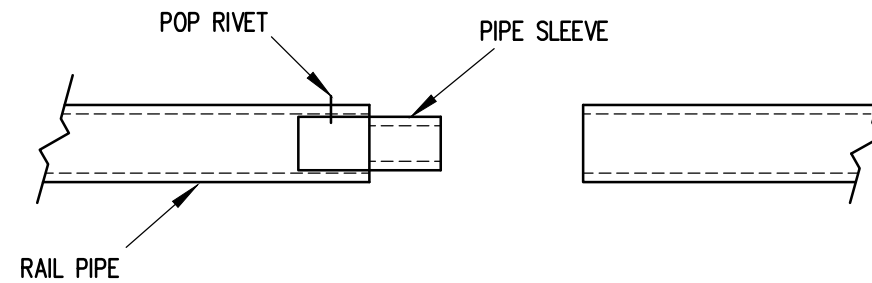


NOTE: \*  
INSTALL 1.1/4" Ø ROUND  
PLASTIC PIPE PLUG AT  
ALL OPEN PIPE ENDS  
(6) LOCATIONS

**SECTION CC**  
3/4" = 1'-0"



		<b>Park Warehouse</b>	
SCALE	3/4" = 1'-0"	REVISIONS	BY DATE
DATE	11/2/11		
DR'N	CDK	CKD	
AP'VD			
TITLE	129-1115-3		NO. 129-1115-3

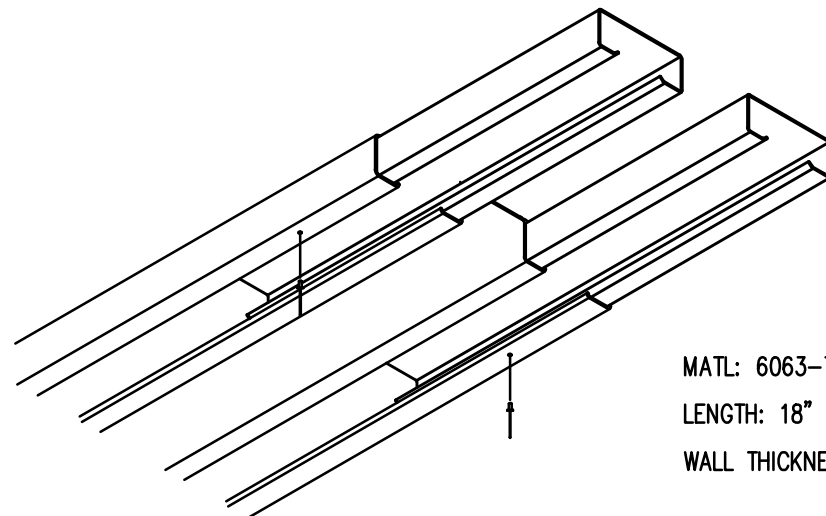


### PIPE SLEEVE ASSEMBLY

1.1/2" = 1' 0"

- 1) INSERT PIPE SLEEVE APPROXIMATELY HALFWAY INTO THE RAIL PIPE. FASTEN PIPE SLEEVE WITH (1) ALUMINUM POP RIVET (5/32" X 5/8")
- 2) SLIDE THE END OF THE ADJOINING RAILPIPE OVER THE PIPE SLEEVE UNTIL THE TWO RAILS ARE FLUSH.

NOTE: PIPE SLEEVES SHOULD BE ATTACHED ON ONLY ONE END TO ALLOW FOR EXPANSION.



MATL: 6063-T6 ALUMN.  
 LENGTH: 18"  
 WALL THICKNESS: .062"

- 1) INSERT SLEEVES APPROXIMATELY HALFWAY INTO THE PLANK WITH THE ENDS STAGGERED ABOUT 1/2". FASTEN SLEEVE WITH (1) ALUMINUM POP RIVET.
- 2) SLIDE THE END OF THE ADJOINING PLANK OVER THE SLEEVES UNTIL THE TWO PLANKS ARE SNUG.

NOTE: SLEEVES SHOULD BE ATTACHED ON ONLY ONE END TO ALLOW FOR EXPANSION.

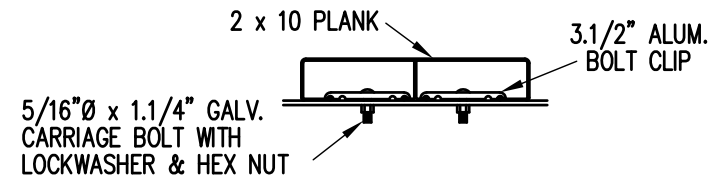
### PLANK SPLICE SLEEVE ASSEMBLY

(TYP. @ ALL PLANK SPLICES)



Park Warehouse

SCALE	AS NOTED	REVISIONS	BY	DATE
DATE	11/2/11			
DR'N	CDK	CKD		
AP'VD				
TITLE	129-1115-3		NO.	129-1115-3



**BOLT CLIP DETAIL**

1.1/2" = 1'-0"



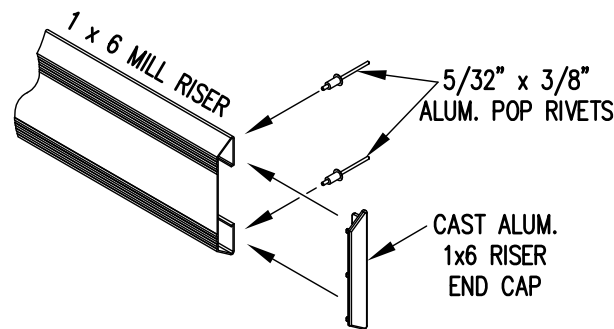
FIG.1

FIG.2

- 1) LOCATE THE CHANNEL END CAP AS SHOWN IN FIG. 1.
- 2) TAP END CAP INTO PLACE WITH RUBBER Mallet OR SOFT WOOD. FIG.2
- 3) DRILL 5/32" HOLES THROUGH THE BOTTOM FLANGE AND THE BOTTOM OUTSIDE PLANK FLANGES OF EACH PLANK. INSTALL 5/32" POP RIVETS.

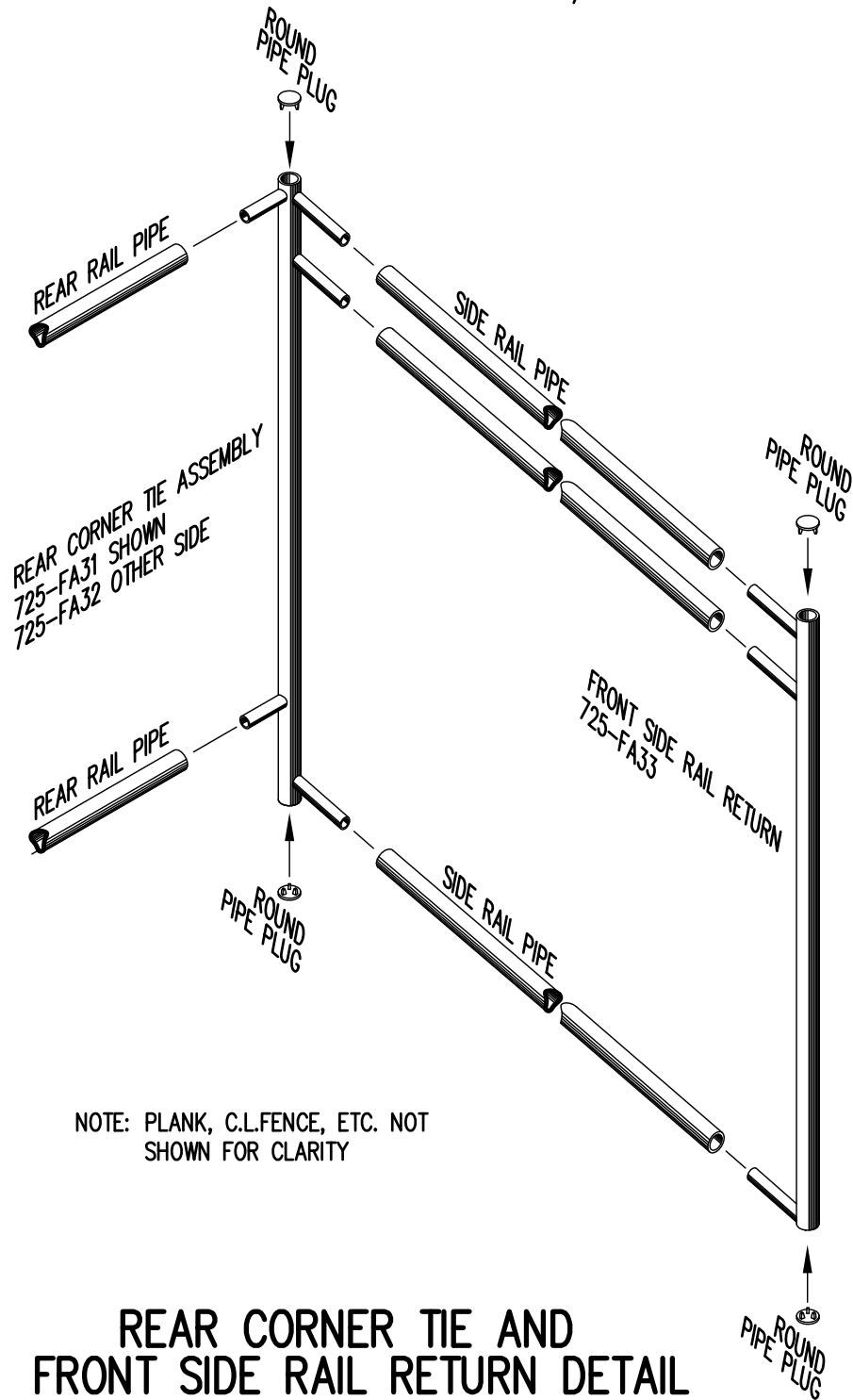
**END CAP DETAIL**

N.T.S.



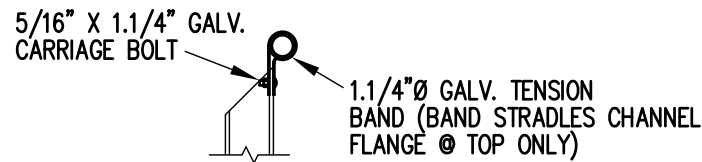
**1 x 6 RISER END CAP**

N.T.S.

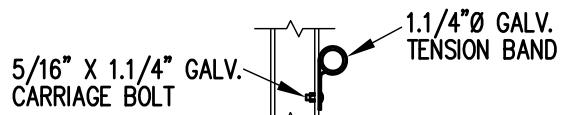


**REAR CORNER TIE AND FRONT SIDE RAIL RETURN DETAIL**

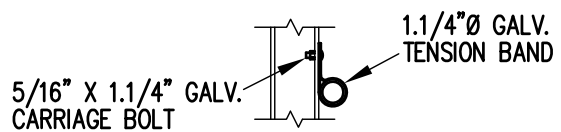
3/4" = 1'-0"



**TOP RAIL**

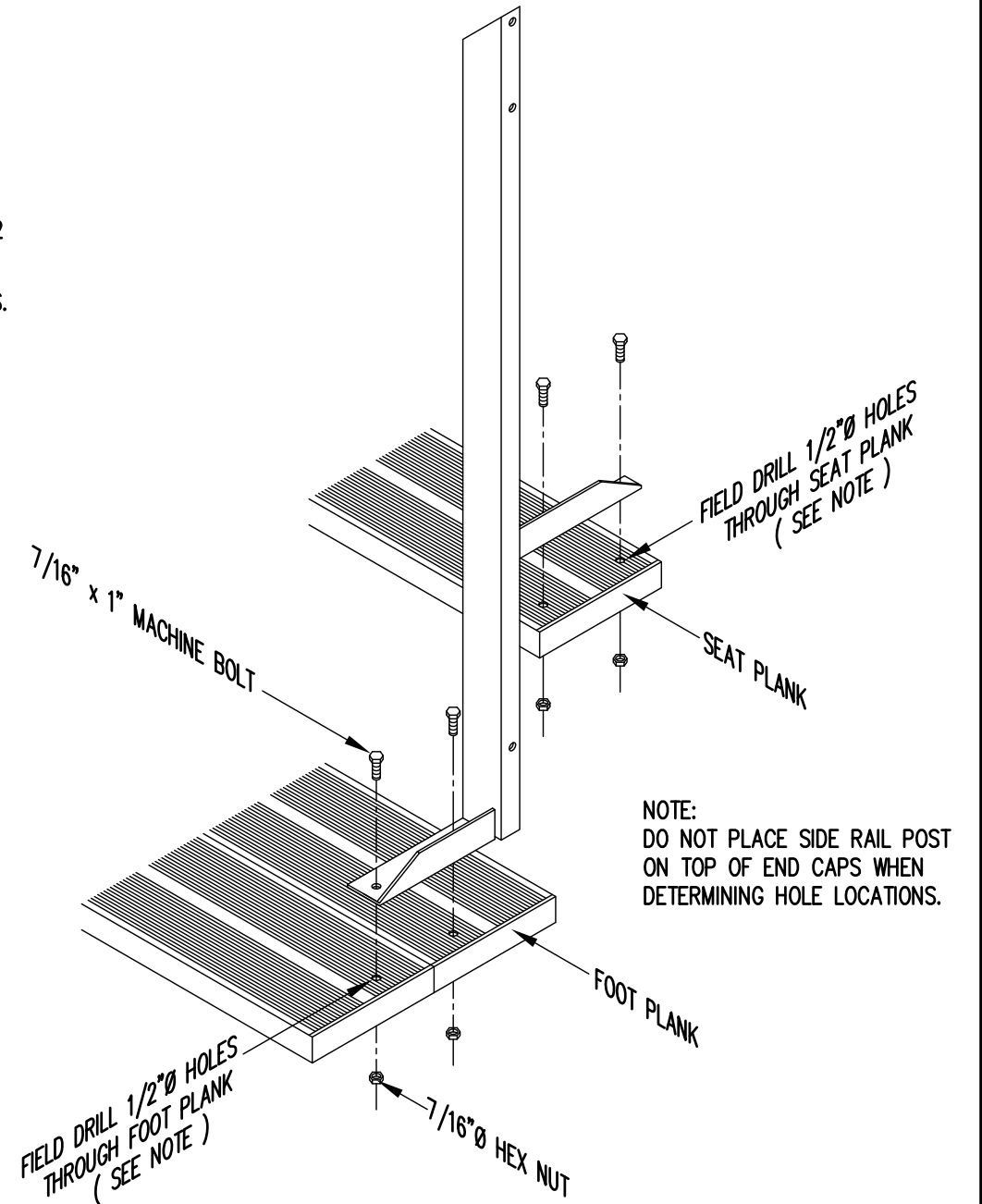


**2ND RAIL**



**BOTTOM RAIL**

**RAIL PIPE ATTACHMENT**



**TYP. SIDE RAIL POST ATTACHMENT**

1" = 1'-0"

<b>Park Warehouse</b>			
SCALE	AS NOTED	REVISIONS	BY
DATE	11/2/11		
DR'N	ADK	CKD	
AP'VD			
TITLE	129-1115-3		NO. 129-1115-3