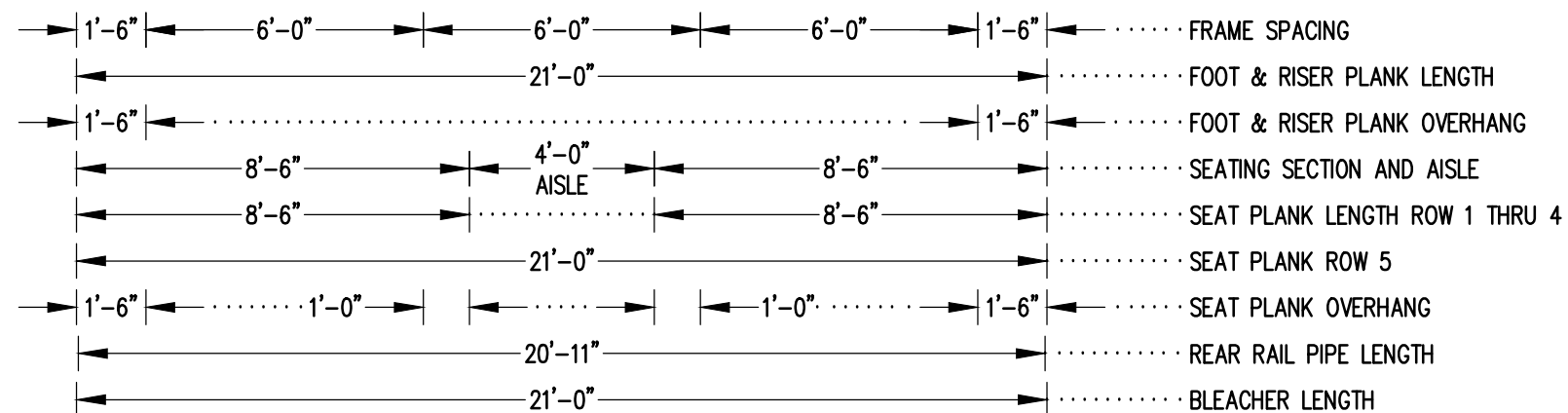


### X-BRACE DETAIL

N.T.S.


- 7/16" X 1" GALV. MACH. BOLT
- △ 7/16" X 1.1/2" GALV. MACH. BOLT

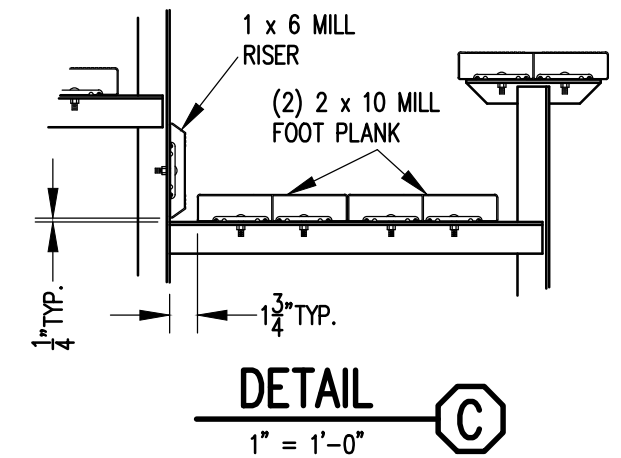
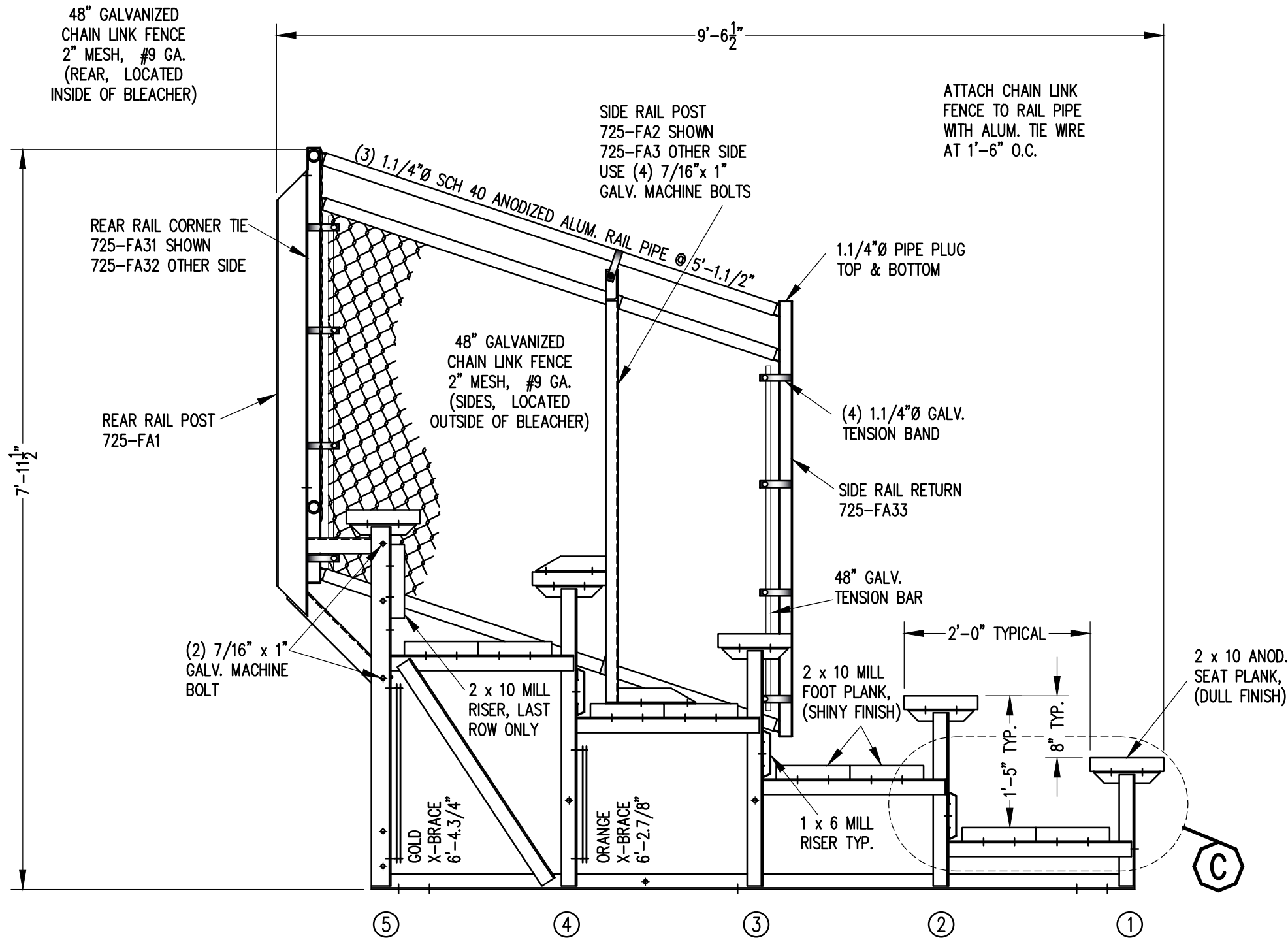


## SEATING & FRAMING PLAN


1/4" = 1'-0"

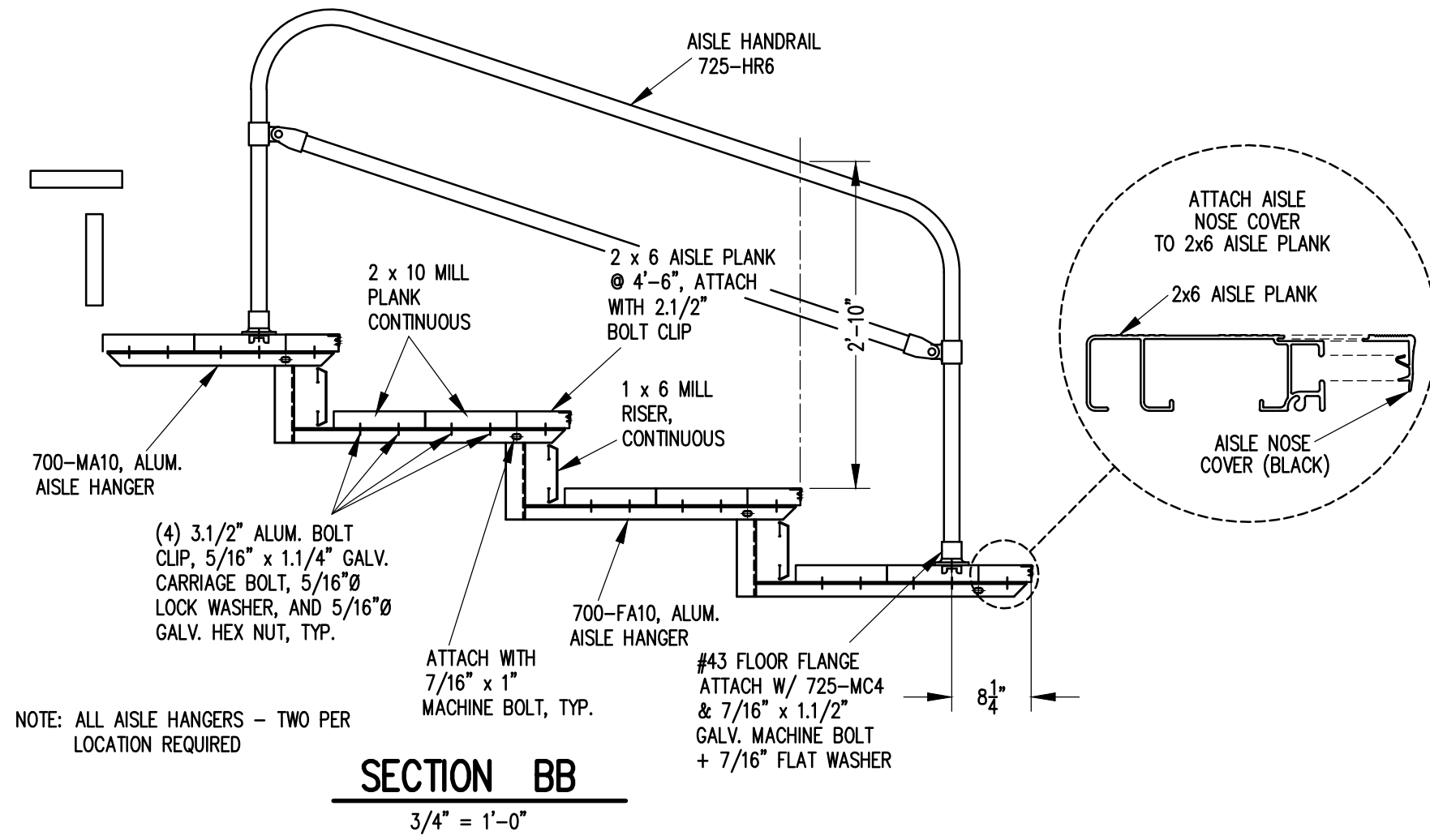
54 NET SEATS @ 18" PER SEAT


		<b>Park Warehouse</b>	
SCALE	AS NOTED	REVISIONS	BY DATE
DATE	11/2/11		
DR'N	CDK	CKD	
AP'VD			
TITLE	129-1106-2		NO. 129-1106-2

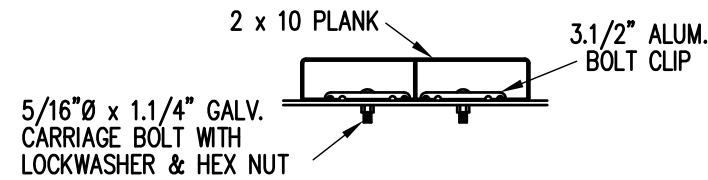


**SECTION AA**  
3/4" = 1'-0"

		<b>Park Warehouse</b>	
SCALE	AS NOTED	REVISIONS	BY DATE
DATE	11/2/11		
DR'N	GPK CKD		
AP'VD			
TITLE	129-1106-2	NO.	129-1106-2

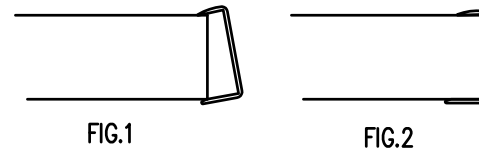


		<b>Park Warehouse</b>	
SCALE	3/4"=1'-0"	REVISIONS	BY DATE
DATE	11/2/11		
DR'N	CDK CKD		
AP'VD			
TITLE	129-1106-2		NO. 129-1106-2



**BOLT CLIP DETAIL**

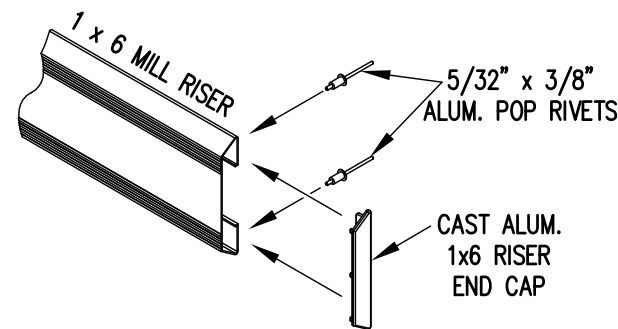
1.1/2" = 1'-0"



- 1) LOCATE THE CHANNEL END CAP AS SHOWN IN FIG. 1.
- 2) TAP END CAP INTO PLACE WITH RUBBER Mallet OR SOFT WOOD. FIG.2
- 3) DRILL 5/32" HOLES THROUGH THE BOTTOM FLANGE AND THE BOTTOM OUTSIDE PLANK FLANGES OF EACH PLANK. INSTALL 5/32" POP RIVETS.

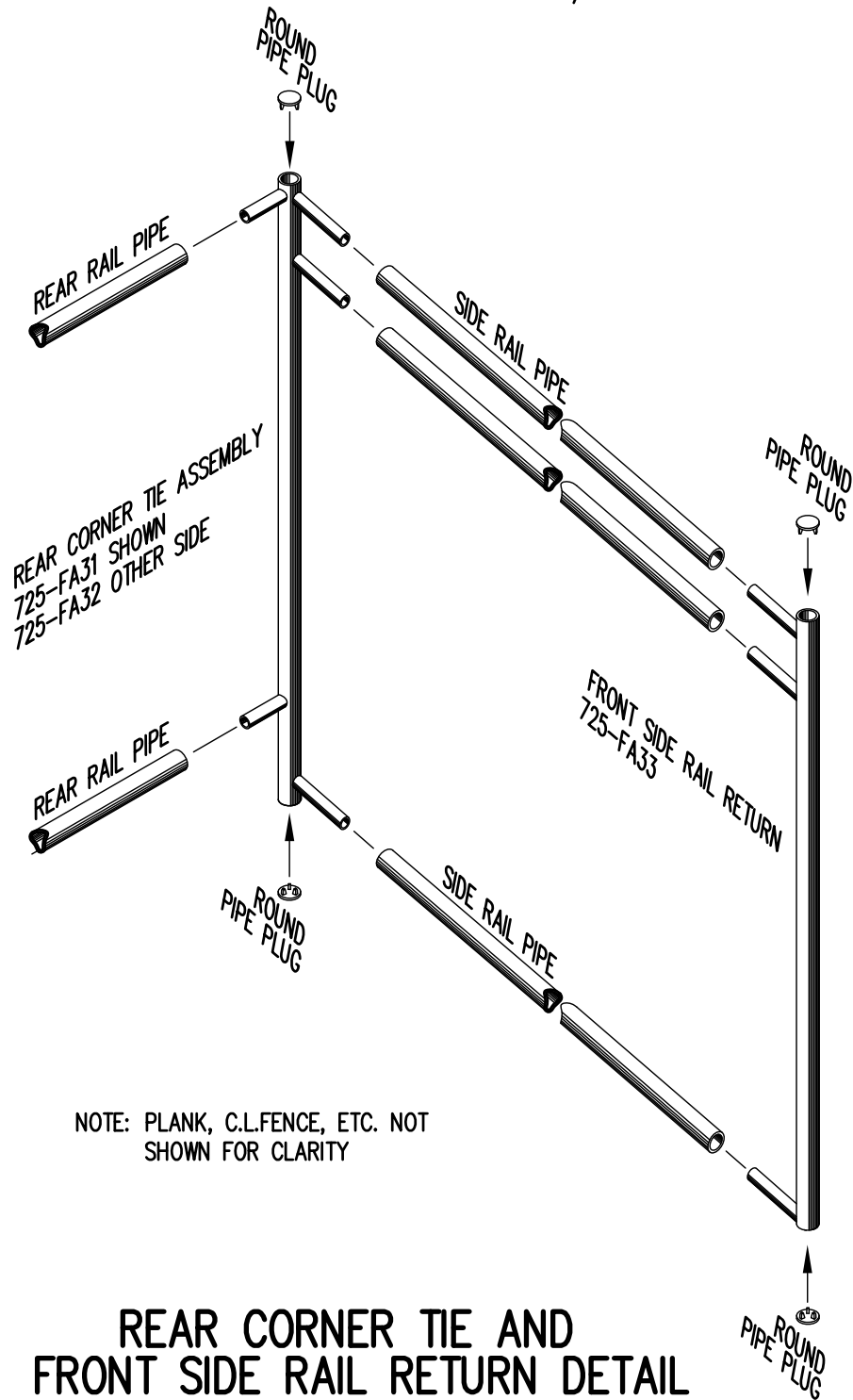
**END CAP DETAIL**

N.T.S.



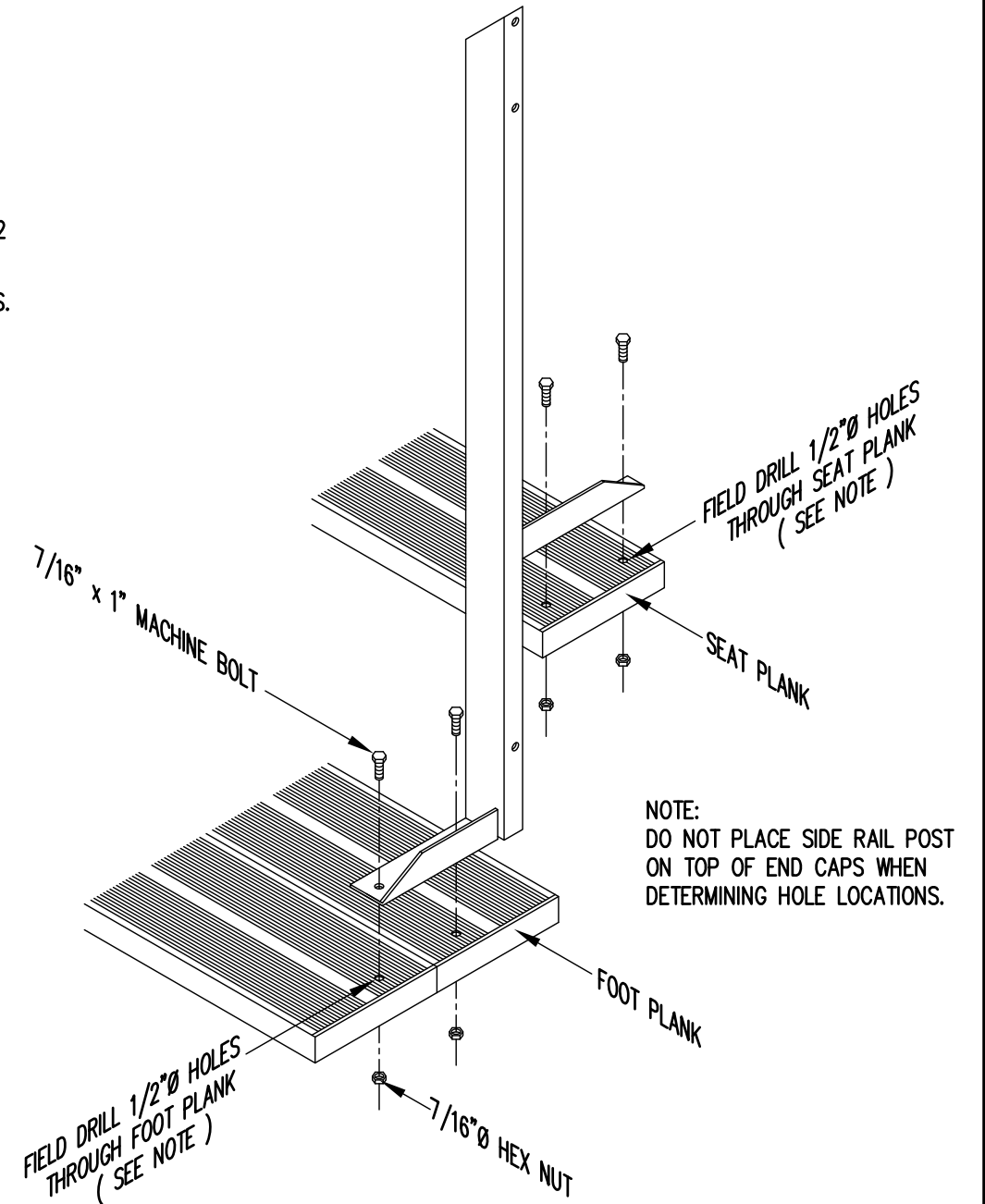
**1 x 6 RISER END CAP**

N.T.S.



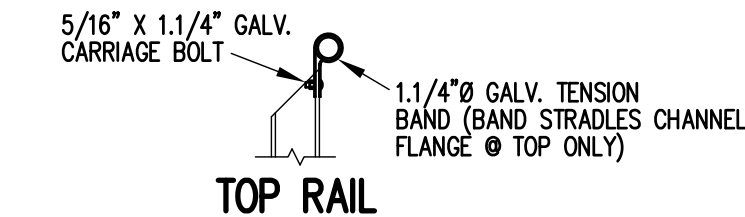
**REAR CORNER TIE AND FRONT SIDE RAIL RETURN DETAIL**

3/4" = 1'-0"

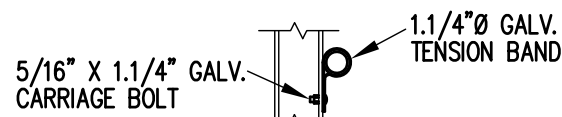


**TYP. SIDE RAIL POST ATTACHMENT**

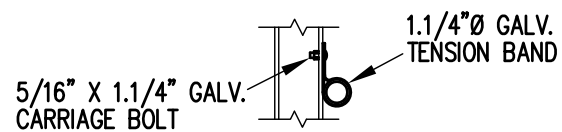
1" = 1'-0"



**TOP RAIL**



**2ND RAIL**



**BOTTOM RAIL**

**RAIL PIPE ATTACHMENT**

		Park Warehouse	
SCALE	AS NOTED	REVISIONS	BY
DATE	11/2/11		
DR'N	ADK CKD		
AP'VD			
TITLE	129-1106-2		NO. 129-1106-2