



Plumbing Kit

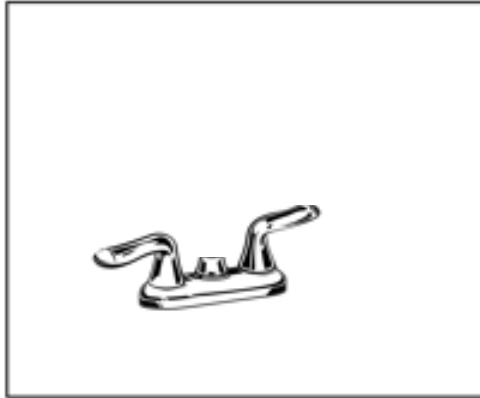
SKU: 570dp925-2



Our quality plumbing kit features everything you need to get your tub installed as quick as possible.

- American Standard 4" on-center (2) handle chrome faucet.
- Vacuum breaker*
- T&S Brass Spray head with coiled hose, comfortable lever - Shuts off completely when not in use.
- 3½" Premium Brass Basket strainer/hair trap.
- 1½" white PVC "P" trap with (3) wing nuts. □ Includes a stainless steel holder to hang the heavy duty spray head on.
- Groomers Best Recommends using Flexible Stainless Steel Hoses to connect to the faucet from your water source
- Designed for use with all Groomer's Best Tubs

American Standard

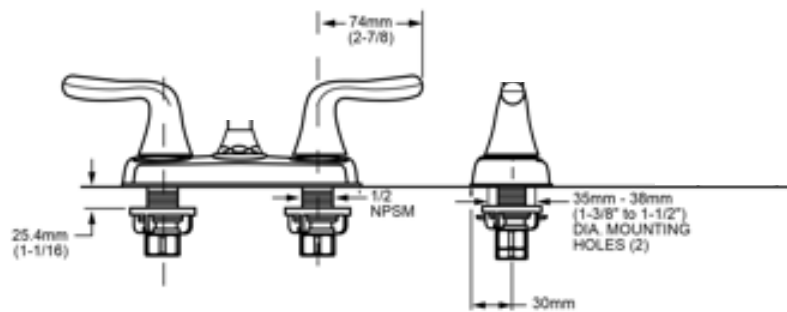


COLONY SOFT

TWO-HANDLE CENTERSET
BAR SINK FAUCET
WITH BRASS GOOSENECK SPOUT

MODEL NUMBER:

- ☐ 2475.500 Centerset Bar Sink Faucet
Metal Lever handles.



GENERAL DESCRIPTION:

Durable brass construction. 1/4 turn washerless ceramic disc valve cartridges. One-half inch male inlet shanks with brass coupling nuts. Brass gooseneck swing spout. 2.2gpm/8.3L/min. maximum flow rate.
(1-1/4)

PRODUCT FEATURES:

Solid Brass Construction: Durable. Ideal for prolonged contact with water.

Ceramic Disc Valve Cartridges: Assures a lifetime of drip-free performance.

SUGGESTED SPECIFICATION:

Low Lead: Meets NSF Standard 61/Section 9 & Prop 65 lead requirements.

Choice of Finishes: Available in Polished Chrome or PVD Polished Brass.

Centerset bar sink faucet shall be cast brass construction with all brass coupling nuts. Shall also feature 1/4 turn washerless ceramic disc valve cartridges. Fitting shall be American Standard Model # 2475.500.

American Standard

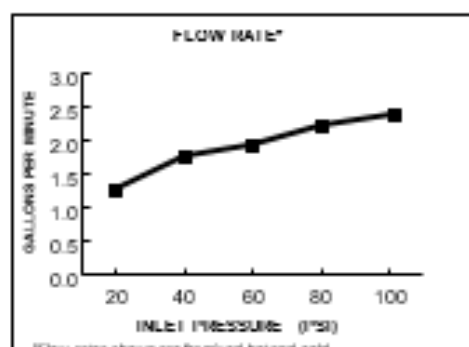
COLONY SOFT

TWO-HANDLE CENTERSET
BAR SINK FAUCET
WITH BRASS GOOSENECK SPOUT

CODES AND STANDARDS

These products meet or exceed the following codes and standards:

ANSI A117.1
ASME A112.18.1
CSA B125
NSF 61/Section 9



Product Number	Description	Finish Options	
		Polished Chrome	PVD Polished Brass
2475.500	Bar Sink faucet. Metal lever handles.	002	099

Meets the American Disabilities Act Guidelines and ANSI A117.1 Requirements for the physically challenged.



T&S BRASS AND BRONZE WORKS, INC.

2 Saddleback Cove / P.O. Box 1000
Travelers Rest, SC 29680



UL
LISTED
ELECTRIC

Model No.

B-0108-C

Item No.

Travelers Rest, SC: 800-475-4886 Valley, CA: 800-423-0100: 954-534-3599 www.tbrass.com

This Space for Architect/Engineer Approval

Job Name _____ Date _____

Model Specified _____ Quantity _____

Customer/Wholesaler _____

Contractor _____

Architect/Engineer _____

EPAct2005 COMPLIANT

Non-Slip Ergonomic Santoprene
Grip w/ Built-in Heat Dissipation
Channels

Crush-Resistant w/ Delrin Waterways

Extra Washer For Hose Connections

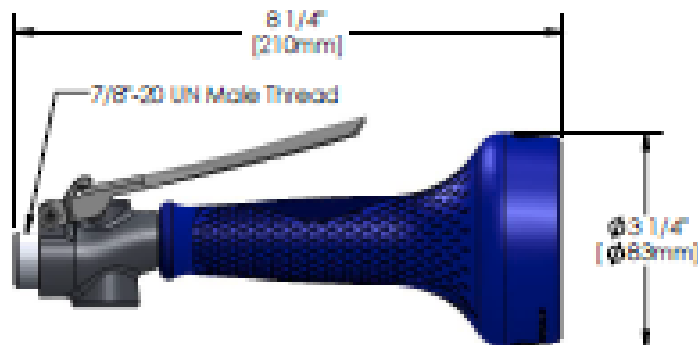
One-Handed Metal Trigger
Lock w/ Added Anti-
Rotational Feature

Surgical-Grade Polished
Stainless Steel

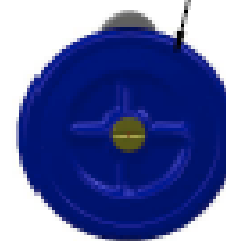
Removable
Screen Filter

Replaceable
Cartridges

Built-In Check Valve
To Prevent Backflow



1.20 GPM @ 90 PSI
Optional 1.5-0.10 g
1.48 GPM Available



Product Specifications:

1.20 GPM Spray Valve w/ Ergo-Grip,
Replaceable Spray Face, &
Integrated One-Handed Trigger Lock

Drawn

KJG

Checked

DHL

Approved

JHB

Scale

1:2

Date

01/08/09

Sheet: 1 of 3



T&S BRASS AND BRONZE WORKS, INC.

2 Saddleback Cove / P.O. Box 1000
Travelers Rest, SC 29686



UL LISTED

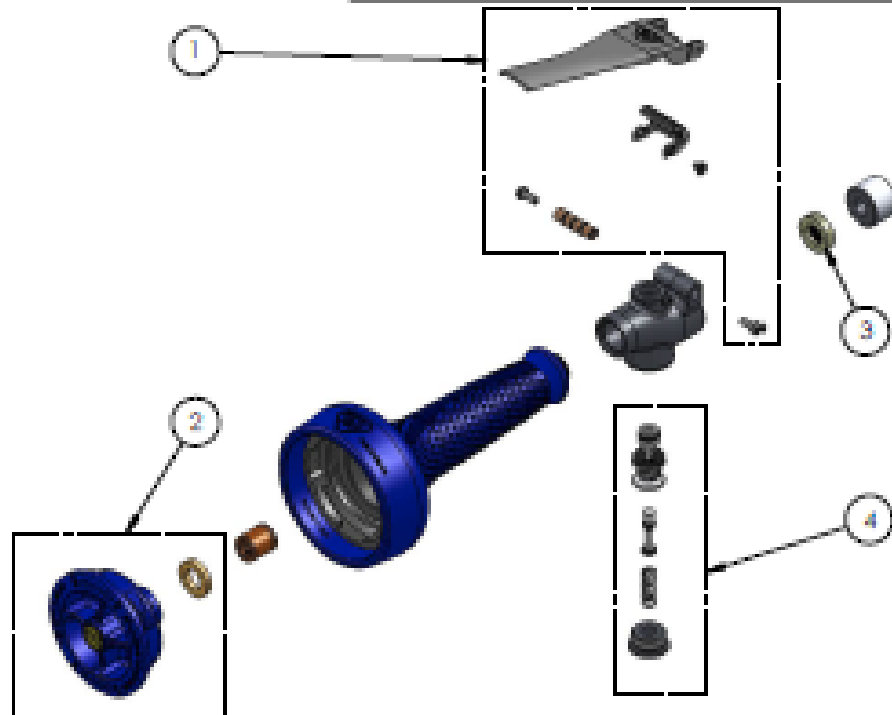
Model No.

B-0108-C

Item No.

Simi Valley, CA: 800-423-0150 Fax: 804-924-3513 www.tsbw.com

ITEM NO.	SALES NO.	DESCRIPTION
1	108T-RK	Trigger Repair Kit
2	108CSF-RK	Spray Face Repair Kit
3	108S-RK	Inlet Screen/Washer Repair Kit
4	108V-RK	Valve Repair Kit



Note:
Individual Items in Repair Kits
are not Sold Separately

Product Specifications:

1.20 GPM Spray Valve w/ Ergo-Grip,
Replaceable Spray Face, &
Integrated One-Handed Trigger Lock

Drawn	Checked	Approved
KJG	DHL	JHB
Scale	Date	
NTS	01/08/09	

Sheet 1 of 1