

Air Kit Prime - 554br100





Supplement your Air Kit with our Pump Stop, a convenient accessory that holds bikes upright while filling your tires.

FINISH OPTIONS

Galvanized



Stainless

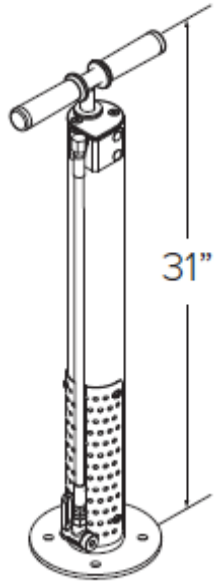


Powder Coat

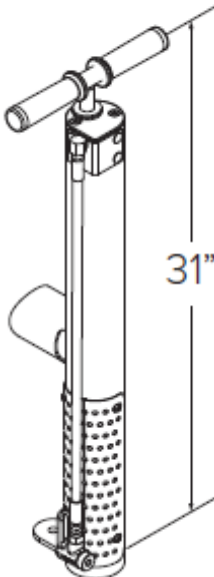
White	Black	Light Gray RAL 7042	Deep Red RAL 3003	Yellow RAL 1023
CNH Bright Yellow	Orange RAL 2004	Beige RAL 1001	Iron Gray 7011	Hunter Green RAL 6005
Light Green RAL 6018	Green RAL 6016	Sepia Brown RAL 8014	Bronze	Silver 9007
Dark Purple	Flat Black	Wine Red RAL 3005		

AIR KIT PRIME

Submittal Sheet



Surface Mount



Fixit Mount

MATERIALS

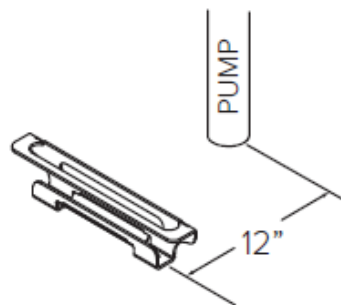
Main Body: 3" x 1/8" steel tube
 Manual air pump: max. 100psi
 Foot: 1/4" steel

FINISHES

- Galvanized**
 An after fabrication hot dipped galvanized finish is our standard option.
- Powder Coat**
 Our powder coat finish assures a high level of adhesion and durability by following these steps:
 1. Sandblast
 2. Epoxy primer electrostatically applied
 3. Final thick TGIC polyester powder coat
- Stainless**
 Stainless Steel: 304 grade stainless steel material finished in either a high polished shine or a satin finish.

MOUNT OPTIONS

- Surface**
 Surface Mount has 7" diameter x .25" flange with four anchoring holes for mounting with standard wedge anchors.
- Fixit**
 Fixit Mount attaches to side of Fixit bike repair station

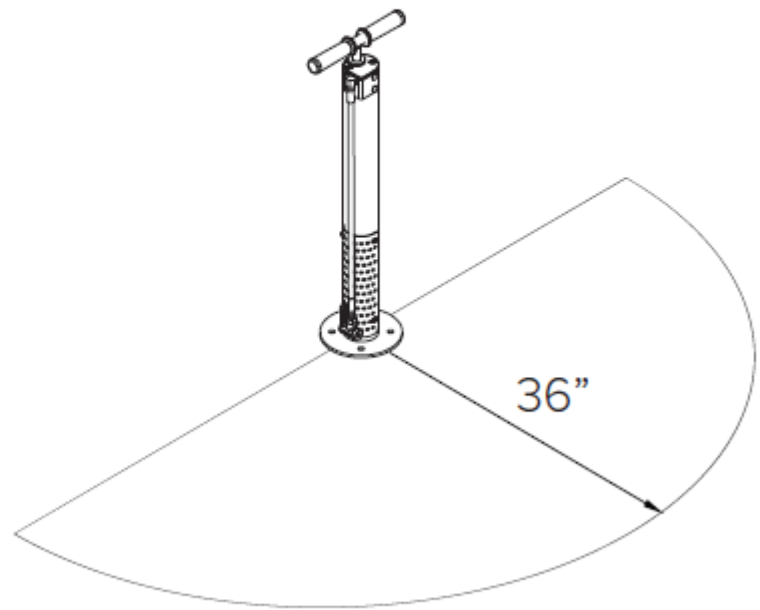


An optional wheel catch is also available to hold bikes with no kick stands



AIR KIT PRIME Setbacks

The Air Kit Prime should be installed
36" from any obstruction.



AIR KIT PRIME

Installation Instructions – Surface Mount

TOOLS NEEDED

Marker or Pencil
 Masonry Drill Bit 3/8"
 Drill (Hammer drill recommended)
 Hammer
 Wrench 9/16"
 Level

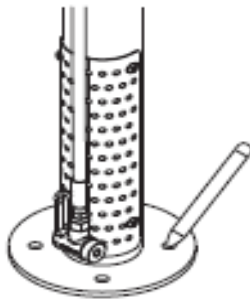
RECOMMENDED BASE MATERIAL

Solid concrete is the best base material for installation. To ensure the proper anchors are shipped with your Air Kit, ask your representative which anchor is appropriate for your application. Be sure nothing is underneath the base material that could be damaged by drilling.



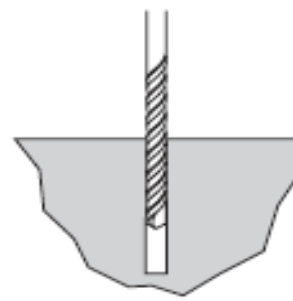
Be sure to save your tamper-resistant tools for any future maintenance. They are costly to replace.

1



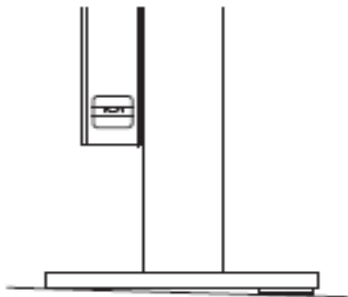
Place the AIR KIT PRIME in the desired location. Use a marker or pencil to outline the holes of the flange onto the base material.

2



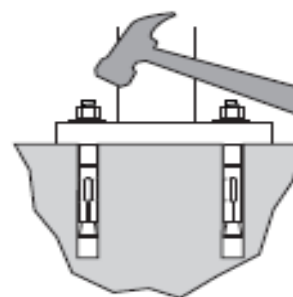
Drill the holes in accordance with the specifications shipped with the anchors. Make sure the holes are at least 3" away from any cracks in the base material.

3



Use washers to level pump if necessary.

4

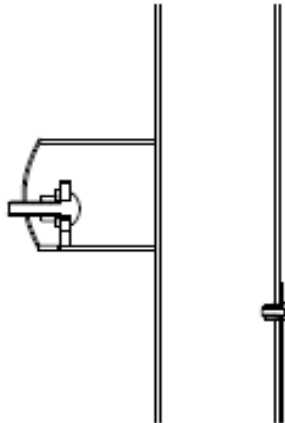


Thread nuts onto anchors, leaving approximately 1/4" of the anchor protruding, and tap into surface. **Place the 2 provided tamper-proof penta nuts on opposite sides.** Tighten nuts down to secure pump.

AIR KIT PRIME

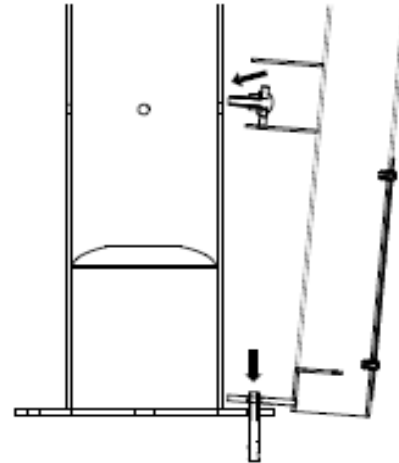
Installation Instructions – Fixit Mount

1



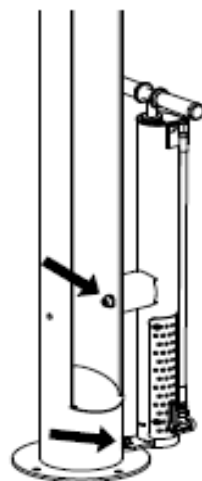
Firmly attach the carriage bolt to the pump with the nut and washer.

2



If attaching to a previously installed Fixit, remove the nut and washer on the wedge anchor on the side of the Fixit to receive the pump. Place the pump lower flange hole over the wedge anchor, and slot the previously attached carriage bolt through the hole on the side of the Fixit.

3



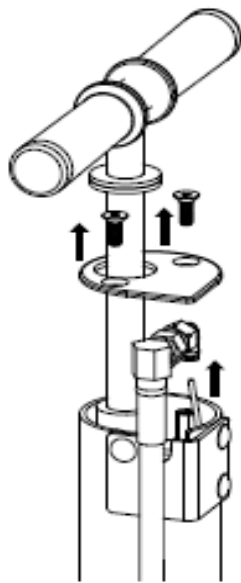
Loosely secure the carriage bolt with a rubber-backed washer and tamper-proof nut in the inside of the Fixit.

Use the wedge anchor washer and nut to secure the pump flange and then tighten the tamper-proof nut inside the Fixit.

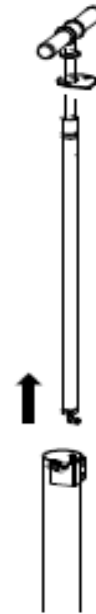
AIR KIT PRIME

Maintenance and Repair Instructions

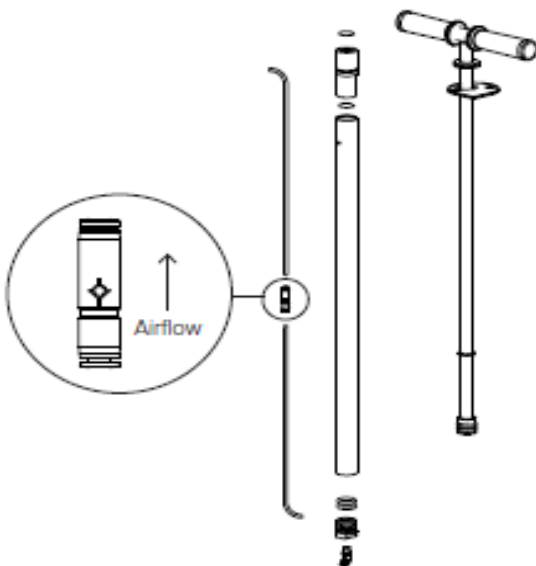
- 1** Remove the 2 tamper-proof screws at the top of the pump and lift the cap. Then disconnect the air line via the push-to-connect fitting at the top of the hose.



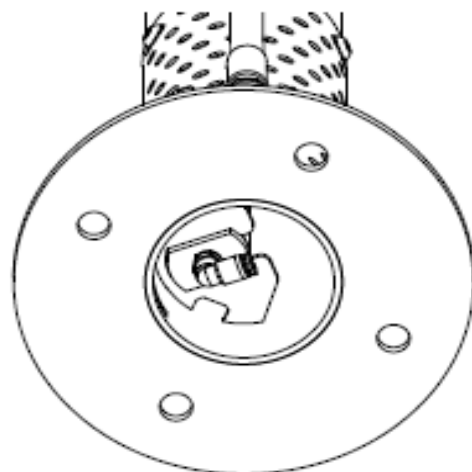
- 2** Slide the pump sideways out of the main body slot and then lift the whole pump and air lines out of the main body.



- 3** The pump can now be taken apart without tools for servicing.

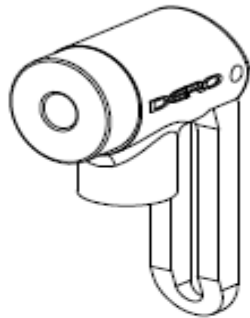


- 4** It may be necessary to gain access to the bottom of the main body to align the pump when re-assembling.



AIR KIT PRIME

Repair Instructions - Changing Metal Head™



Remove Metal Head™ by turning counter-clockwise. You will need a 3/4" wrench. Replace with new Metal Head and tighten.

