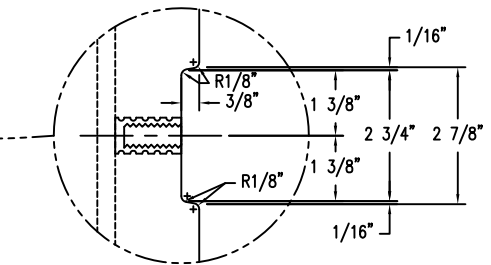
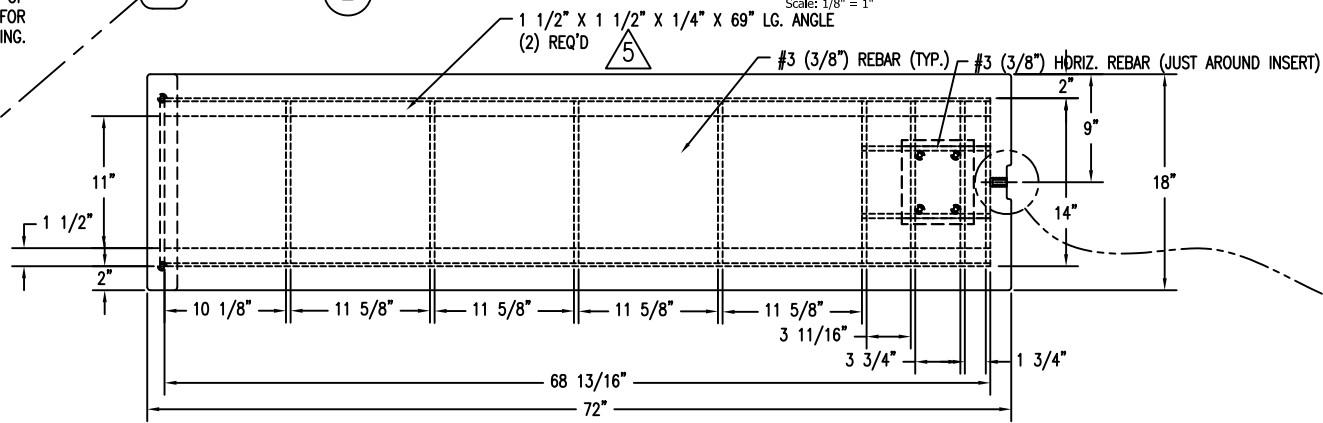
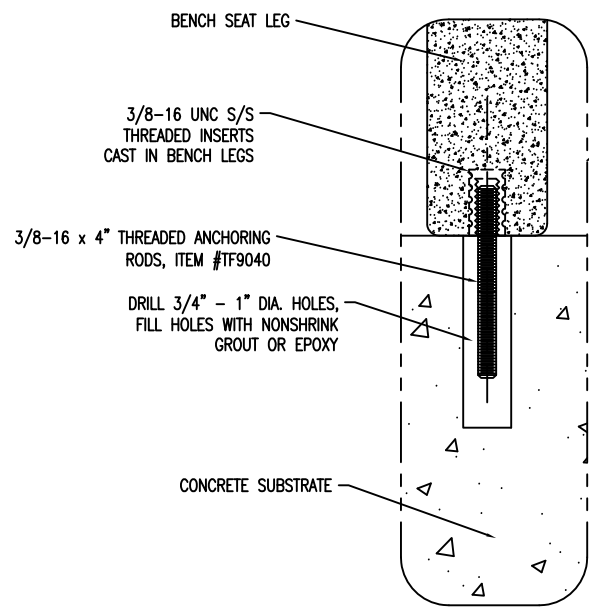
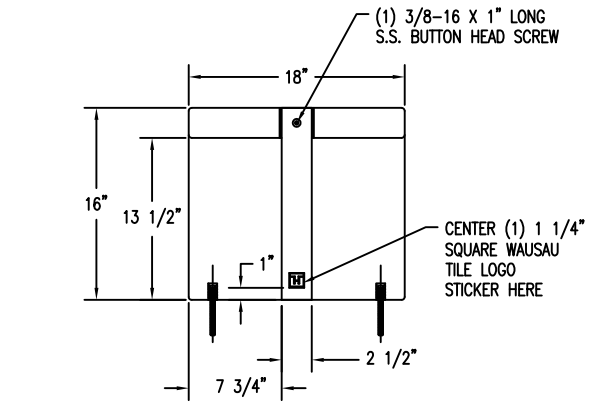
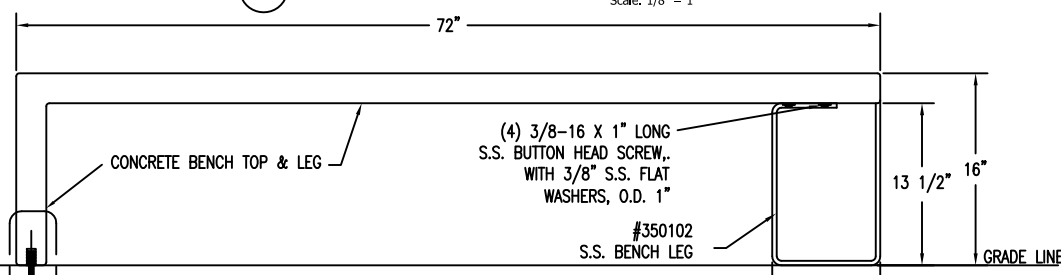
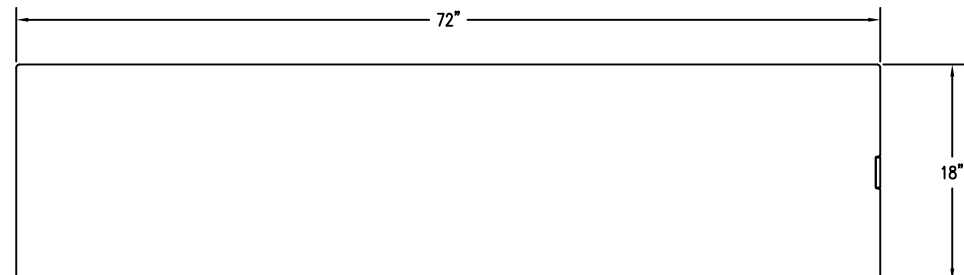
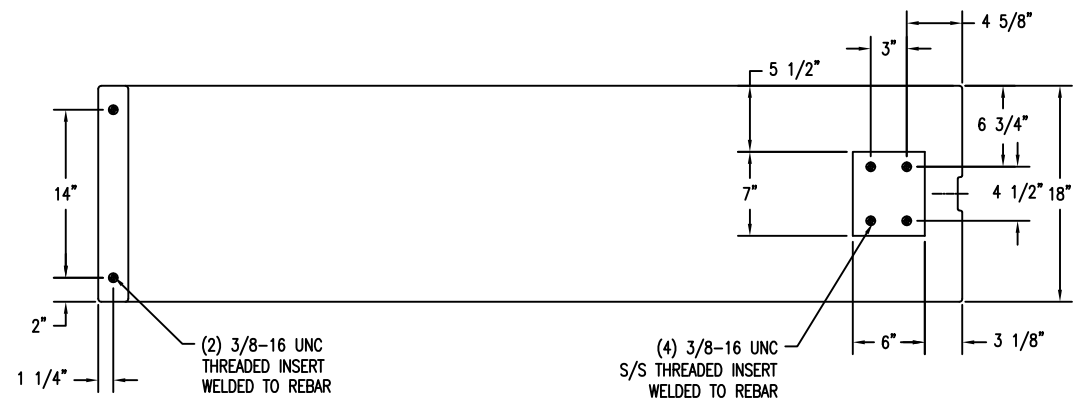
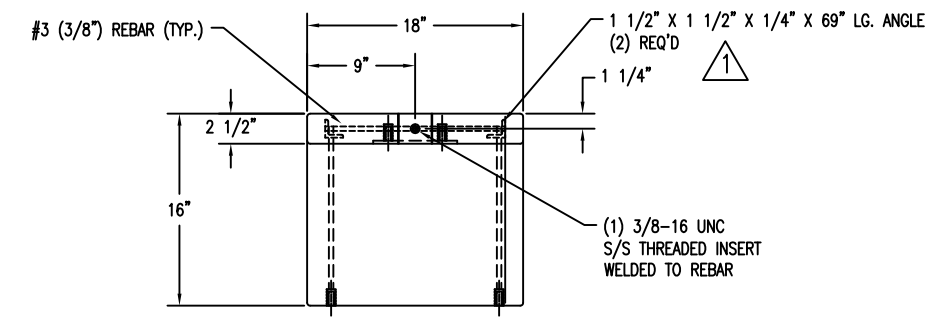
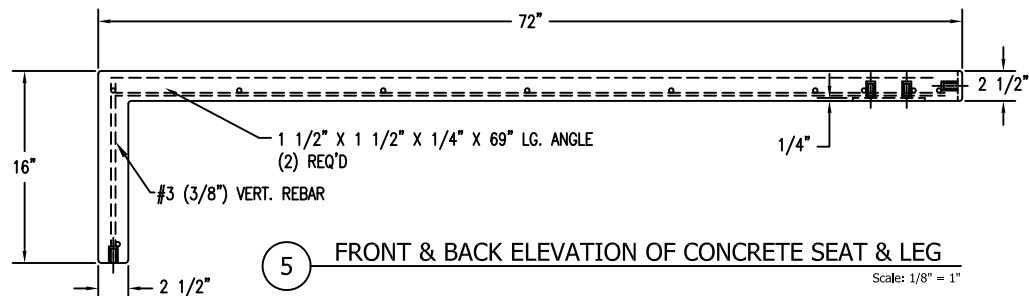


PARTS SCHEDULE FOR WS-306 BENCH			
ITEM #	DESCRIPTION	QTY	PART NO.
1	CONCRETE BENCH SEAT WITH 1 LEG	1	
2	STAINLESS STEEL LEG	1	350102
3	3/8X16 - 1" LONG S.S. BUTTON HEAD SCREW	5	1173815
4	3/8" S.S. FLAT WASHER, O.D. 1"	4	1171018
5	3/8-16 X 4" LONG ANCHORING RODS	2	TF9040



NOTE:  
ALL CORNERS TO HAVE 1/4" RADIUS UNLESS NOTED OTHERWISE.

NOTE:  
LOCATE INSERTS WITH JIG TO ENSURE FIT UP WITH STAINLESS STEEL LEG.



PROPRIETARY AND CONFIDENTIAL  
THE INFORMATION CONTAINED IN THIS DRAWING IS THE SOLE PROPERTY OF Park Warehouse, LLC. 5301 North Federal Highway, Suite 140, Boca Raton, FL. ANY REPRODUCTION IN PART OR AS A WHOLE WITHOUT THE WRITTEN PERMISSION OF Park Warehouse, LLC. 5301 North Federal Highway, Suite 140, Boca Raton, FL. IS PROHIBITED.