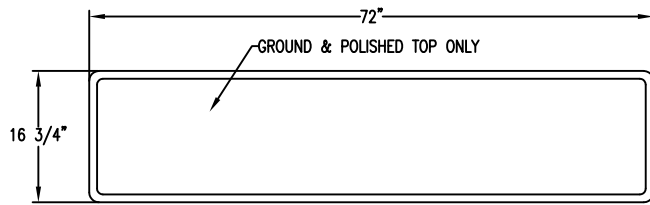


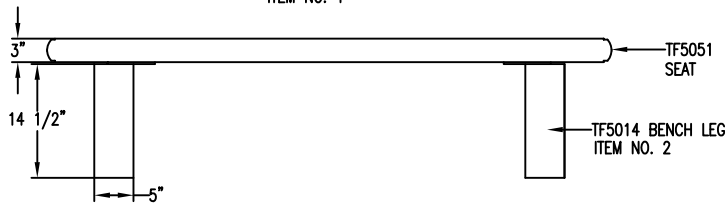
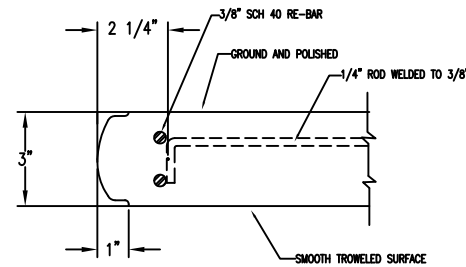
TF5043

ITEM NO.	DISCRIPTION	WT.	PART NO.	QTY.	
1	CONCRETE BENCH SEAT	330#	TF5051	1	
2	CONCRETE BENCH LEGS	80#	TF5014	1	
3	3/8"-16X1" HHCS BOLTS	.54#	RM 10261	6	
4	3/8"X 7/8" DIA. FLAT WASHERS	.24#	RM 10195	6	
5	3/8"-16 X 1" FIT SLOTTED MACHINE SCREW	.96#	RM 10511	6	
6	ALUMINUM PLATE 1/4" X 12" X 8"	27#	RM 11221	1	
7	6X8 4ML. DRAWSTRING BAG	.08#	RM 10109	1	
			HARDWARE BOLT KIT	TF9370	1

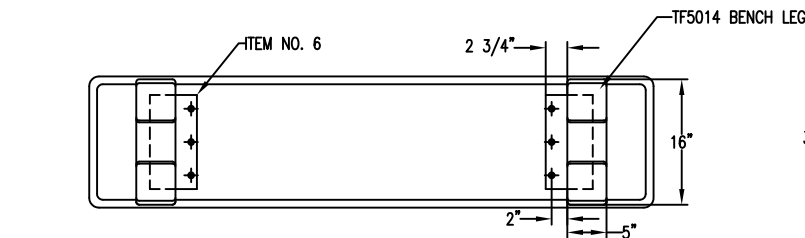
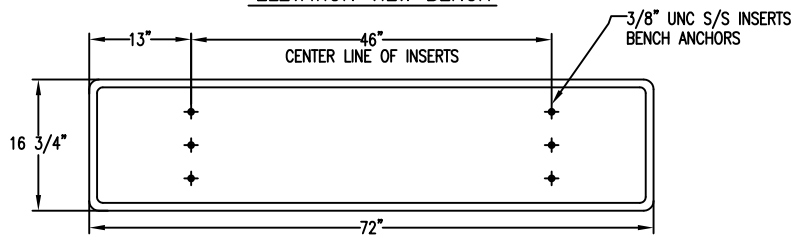


TOP VIEW BENCH SEAT

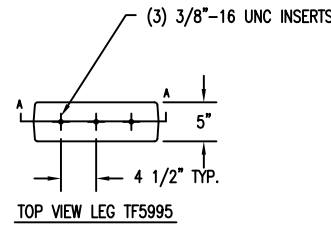
ITEM NO. 1



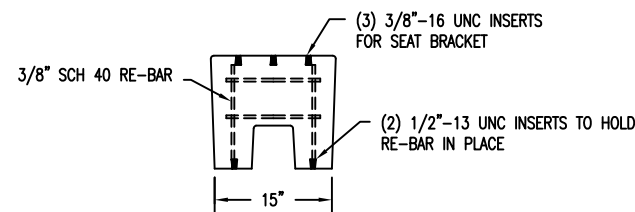
ELEVATION VIEW BENCH



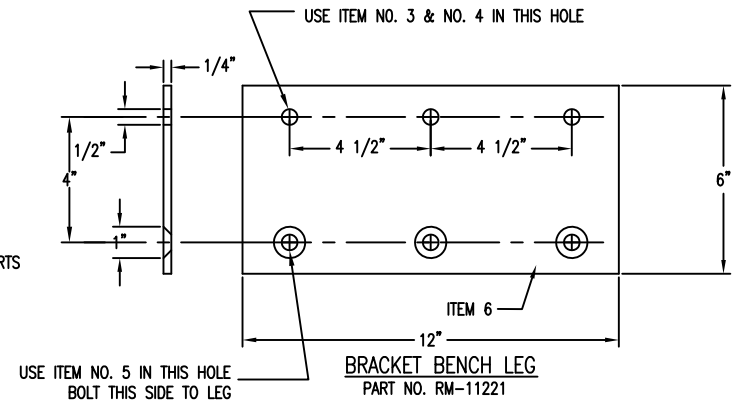
BOTTOM VIEW BENCH



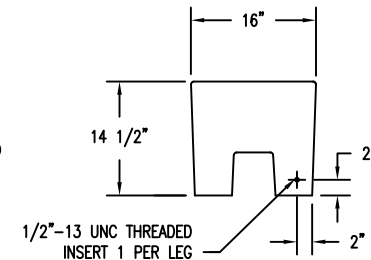
TOP VIEW LEG TF5995



SECTION A-A
SECTION VIEW TF5995



BRACKET BENCH LEG
PART NO. RM-11221



SIDE ELEVATION VIEW TF5995

WT. OF COMPLETE UNIT: 500#



PROPRIETARY AND CONFIDENTIAL
THE INFORMATION CONTAINED IN THIS DRAWING IS THE SOLE PROPERTY OF Park Warehouse, LLC. 5301 North Federal Highway, Suite 140, Boca Raton, FL. ANY REPRODUCTION IN PART OR AS A WHOLE WITHOUT THE WRITTEN PERMISSION OF Park Warehouse, LLC. 5301 North Federal Highway, Suite 140, Boca Raton, FL. IS PROHIBITED.