

# PRODUCT DETAILS

## FR 0.25PC

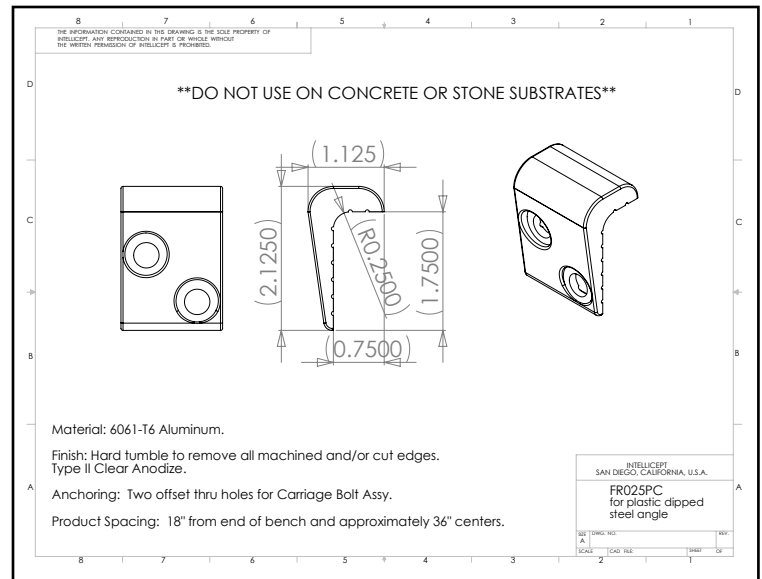
(FR Series - Surface Mount Aluminum)



888-321-5334

**Description:** This part is designed to fit plastic coated/expanded metal benches with a 1/4" radius edge. May be used on some model fiberglass benches.

**NOTE:** NOT RECOMMENDED FOR WOOD OR PLASTIC BENCHES



**Material:** 6061-T6 Aluminum

**Finish:** Hard tumbled to remove all machined and/or cut edges. Aluminum finish options include Type II Clear Anodize.

**Corner Radius:** For corner with 1/4" radius.

**Outside Dimensions:** 1-1/2" (wide) x 1-1/8" (deep) x 2-1/8" (tall)

**Anchoring:** Two offset thru holes for Carriage Bolt Assy

**Product Spacing :** 18" from end of bench and approximately 36" centers.