



T - TABLE INGROUND MOUNT

SKU: ACPT21-2



TOOLS REQUIRED:

RATCHET & IMPACT DRIVER

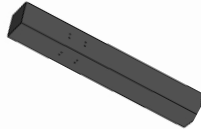
7/16" SOCKET & 3/4" SOCKET

3/4" OPEN END OR BOX END WRENCH

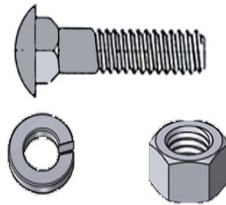
MATERIALS



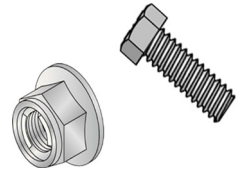
(2) TABLE TOP SUPPORTS



(1) BASE COMPONENT



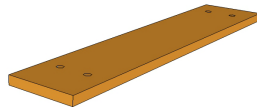
(36) 2 1/2" CARRIAGE BOLTS
(36) LOCK WASHERS
(36) HEX NUTS



(24) HEX SHOULDER NUT
(24) 1 1/2" HEX HEAD BOLTS



(4) ARM COMPONENTS



(5) TABLE TOP BOARDS
(4) SEAT BOARDS

INSTRUCTIONS

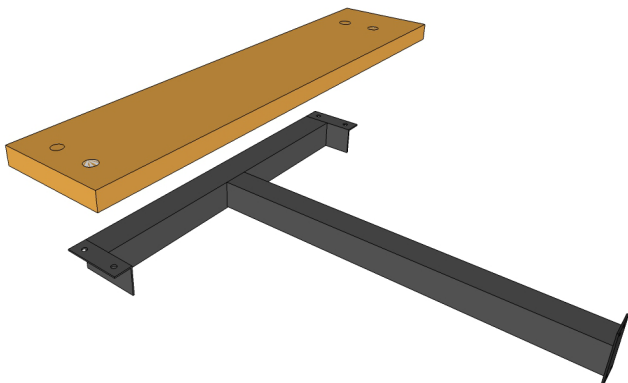


Illustration 'A'

1. Check parts list to verify all materials are included.
2. Place arm component on solid surface with mounting holes facing up. (Illustration 'A')
3. Attach bench seat to arm component using carriage bolts, lockwashers, and hex nuts. Repeat for all seats.

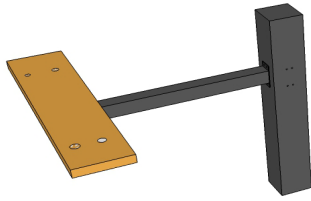


Illustration 'B'

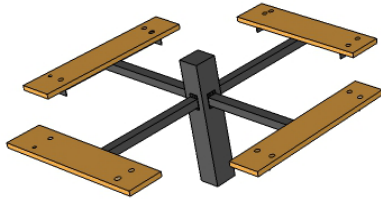


Illustration 'C'

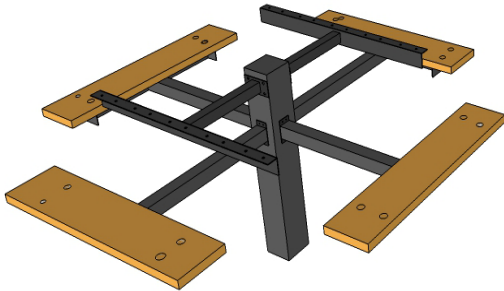


Illustration 'D'

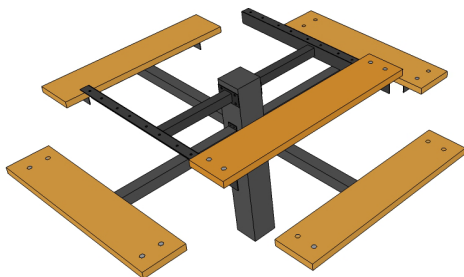


Illustration 'E'

NOTE: When attaching arm components to base, it will be necessary to have someone hold the base component upright.

4. Place base component on a flat and level surface. Attach arm component to base using hex head bolts and shoulder nuts.

5. Take remaining seating components and repeat step 4. (Illustration 'C')

6. Attach table top supports to base components using hex head bolts and shoulder nuts. (Illustration 'D') Repeat for opposite side.

7. Attach table top board to supports using carriage bolts, lock washers and hex nuts. (Illustration 'E')

8. Depending on location for your new table make sure to pour concrete if you are mounting in a grassy area. The seat height should be about 17" from the ground up.